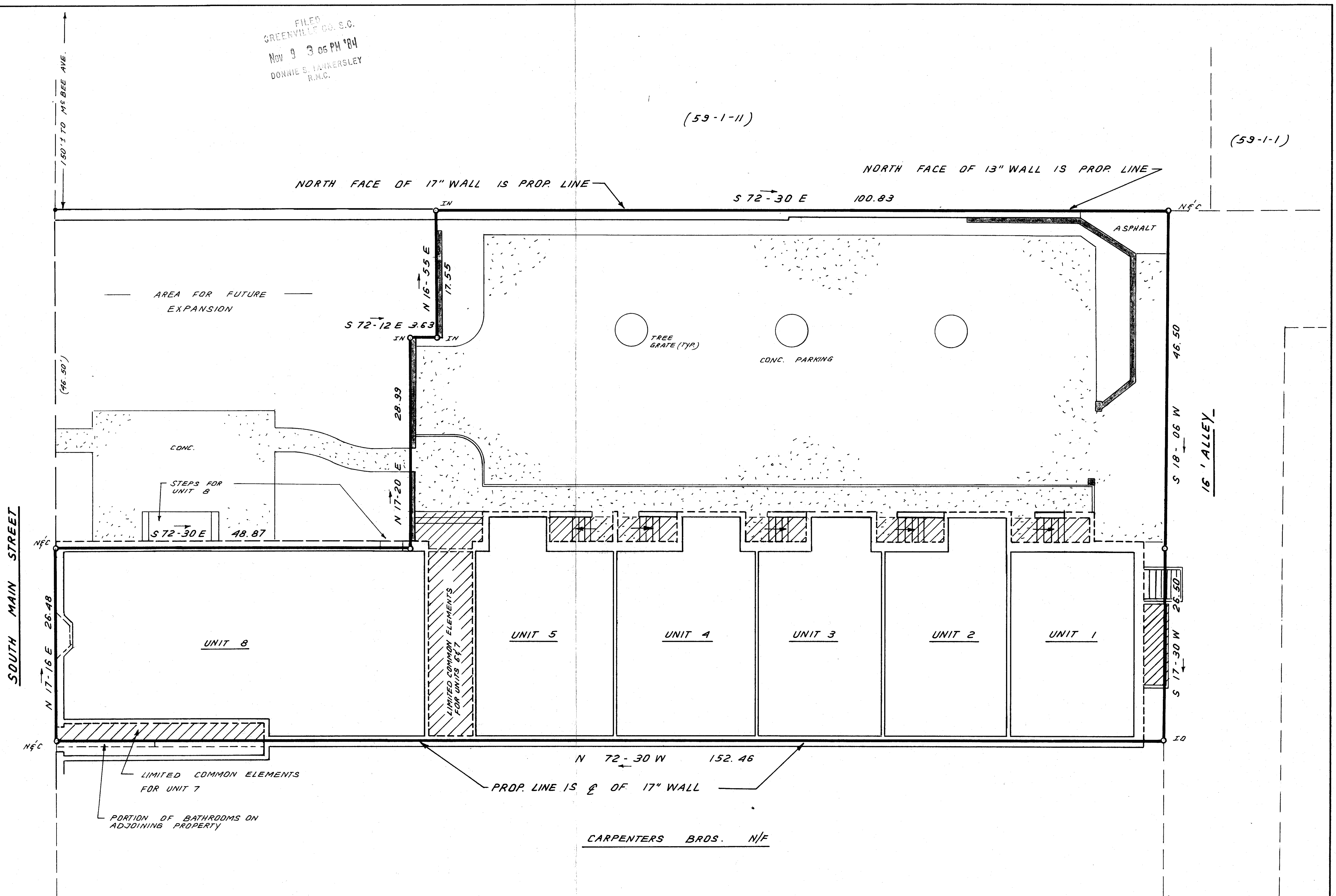
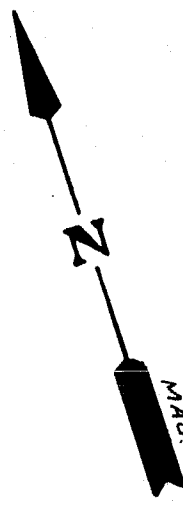


FILED
 GREENVILLE CO. S.C.
 Nov 9 3 06 PM '84
 DONNIE S. TINKERSLEY
 R.N.C.



LEGEND:
 --- COMMON ELEMENTS
 — UNIT BOUNDARY
 ▨ LIMITED COMMON ELEMENTS

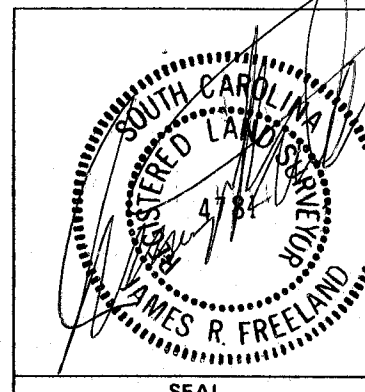
CARPENTERS BROS. N/F

THIS PLAT IS NOT A SUBDIVISION
 AS DEFINED BY THE GREENVILLE
 COUNTY SUBDIVISION REGULATIONS.
 11.9.1984 *John J. Wenger*
 Chairman, Secretary, or Director
 Planning
 Greenville County Planning Commission

10-2-44

14285

EXHIBIT "B"



STATE OF SOUTH CAROLINA
 GREENVILLE COUNTY
 COURT SQUARE
 HORIZONTAL PROPERTY REGIME
 FIRST FLOOR
 UNIT 1; 2; 3; 4; 5; 8

FREELAND & ASSOCIATES Engineers & Land Surveyors GREENVILLE, S.C.	
SURVEY	J.E.C.
DRAWN	B.R.
CHECK	
SCALE	1/8" = 1'-0"
DATE	10-16-84
DWG. NO.	11,302-A

MICROFILMED