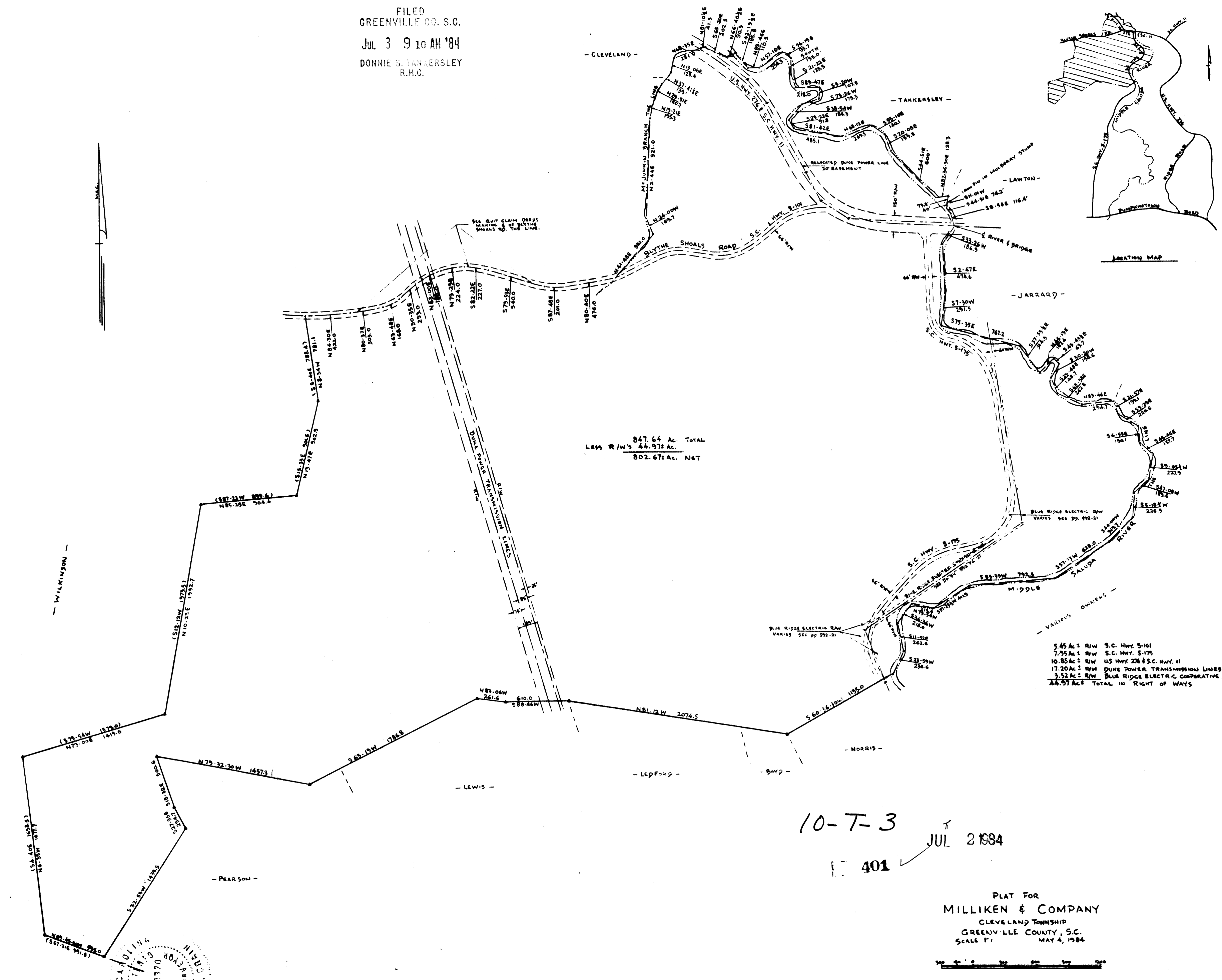
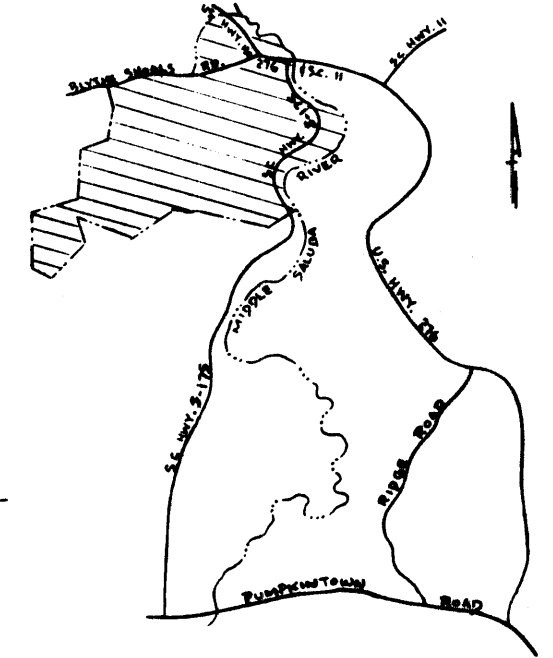


FILED  
 GREENVILLE CO. S.C.  
 JUL 3 9 10 AM '84  
 DONNIE S. TANKERSLEY  
 R.M.C.



5.45 Ac. R/W S.C. HWY 5101  
 7.95 Ac. R/W S.C. HWY 5175  
 10.85 Ac. R/W US HWY 286 S.C. HWY 11  
 17.20 Ac. R/W DUKE POWER TRANSMISSION LINES  
 3.52 Ac. R/W BLUE RIDGE ELECTRIC COOPERATIVE, INC.  
 44.97 Ac. TOTAL IN RIGHT OF WAYS

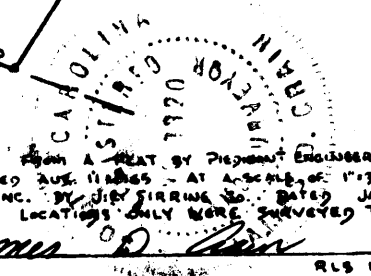
10-T-3  
 JUL 2 1984

401

PLAT FOR  
 MILLIKEN & COMPANY  
 CLEVELAND TOWNSHIP  
 GREENVILLE COUNTY, S.C.  
 SCALE 1" = 100'



THIS PLAT WAS PREPARED FROM A PLAT BY DEPARTMENT ENGINEERS & ARCHITECTS FOR JUDSON MILLS DATED AUG 11 1983 - AT A SCALE OF 1" = 300' & A PLAT FOR J.P. STEVENS & CO., INC. BY J.P. STEVENS & CO., INC. DATED JAN 21, 1984 (THE REASONS & POWER LINE LOCATIONS ONLY WERE CORRECTED THIS DATE)



RLS No. 3320

REC'D MOST SURVEYORS JUL 03 84 001  
 GREENVILLE, S.C.

5.0000

MICROFILMED