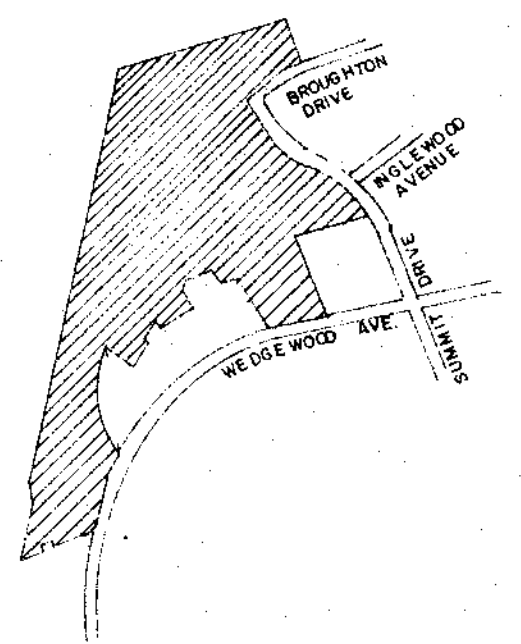
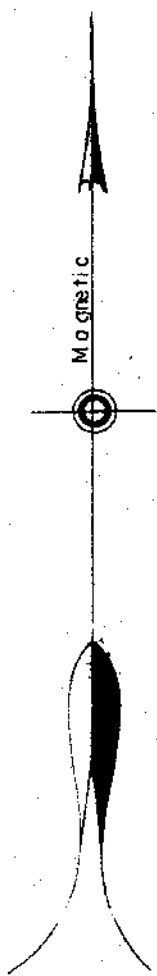
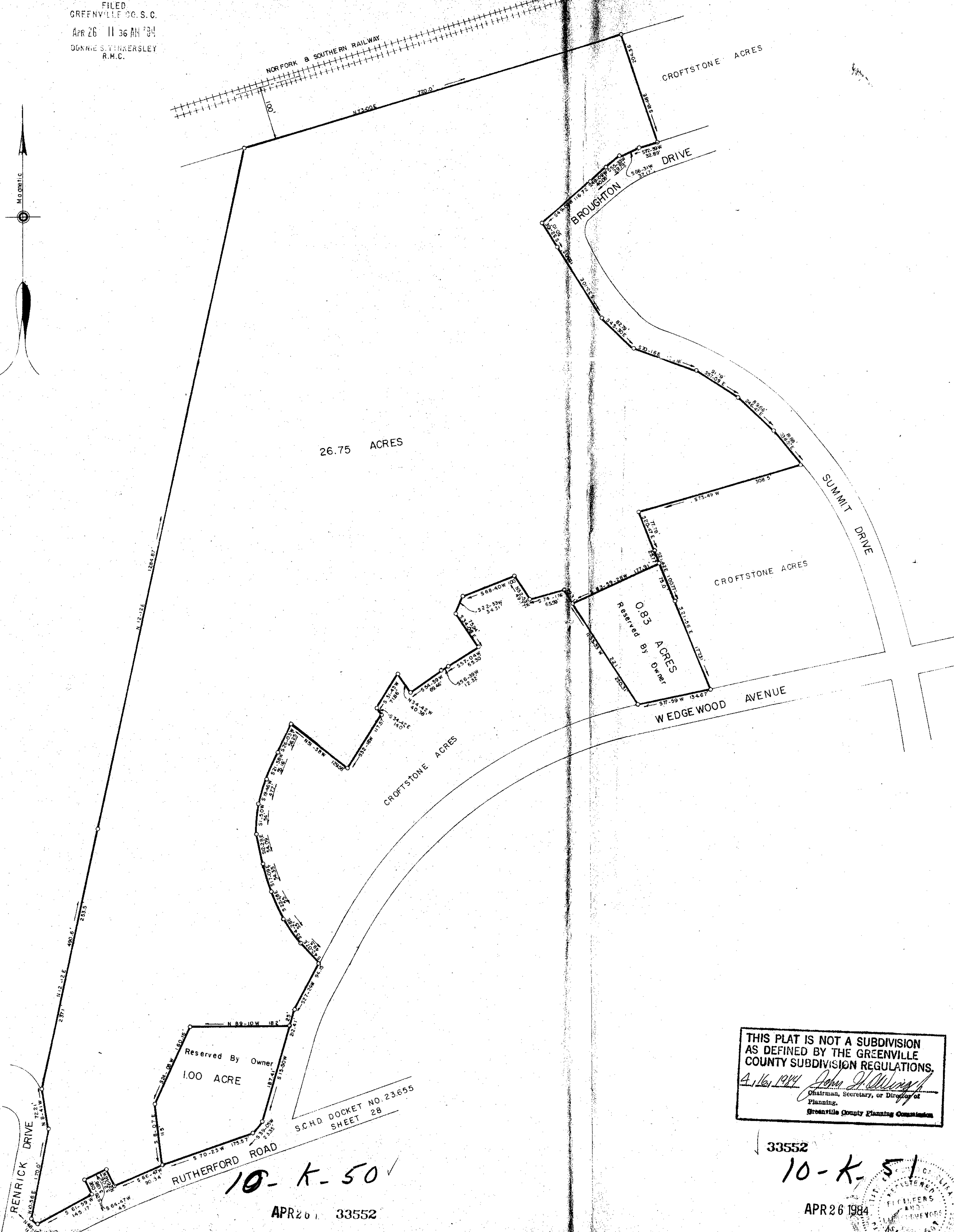


FILED
GREENVILLE S.C. S. C.
APR 26 11 36 AM '84
DORRIS S. THOMPSON
R.M.C.



LOCATION MAP SCALE 1" = 800'



THIS PLAT IS NOT A SUBDIVISION
AS DEFINED BY THE GREENVILLE
COUNTY SUBDIVISION REGULATIONS.
4/16/1984 *John H. Williams*
Chairman, Secretary, or Director of
Planning.
Greenville County Planning Commission

33552
10-K-51
APR 26 1984
S. C. Reg. No. 916

10-K-50
APR 26 1984 33552

IRON PINS AT ALL CORNERS

PRODEL, INC. OWNER	DALTON & NEVES CO. ENGINEERS
NO. OF ACRES AS SHOWN	MILES OF NEW ROADS 0
NO. OF LOTS 0	DATE MARCH, 1984
ZONED	R-6

SCALE 1" = 100'
100 0 100 200
S. C. Reg. No. 916
10.00CI