

-W/F L.R. DAVIS-

SB9-22E
151.64'

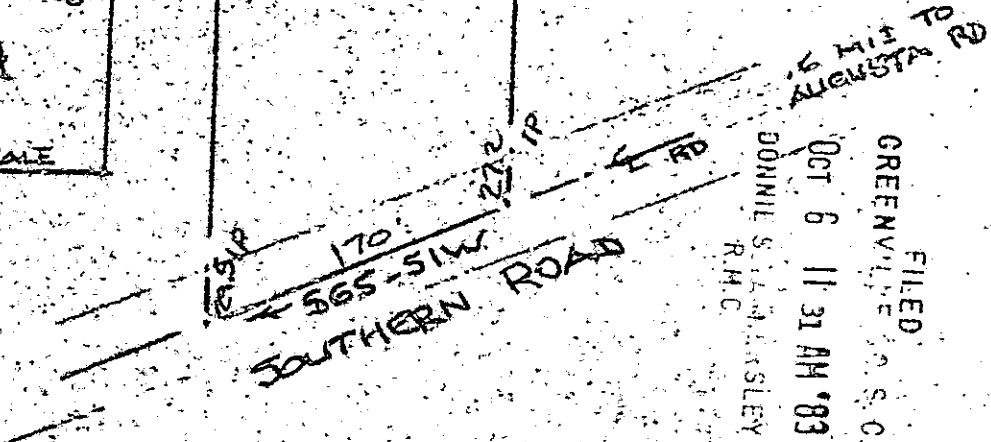
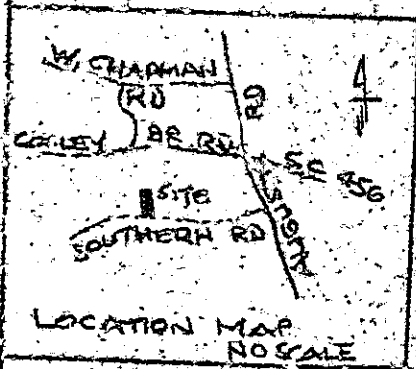
-W/F L.R. DAVIS-

N2-48E
1171.48' TOT
1141.78'

1072.97
S2-98W
1108.17 TOT

-W/F L.R. DAVIS-

-3.95 AC-



FILED
GREENVILLE, S.C.
OCT 6 11 31 AM '83

OCT 6 1983

10-C-7

SURVEY FOR
DENDY LOLLIS
NEAR GREENVILLE, S.C.
100' 23 AUG 0 1983 100'

11432

I hereby certify the accuracy of this plan as shown hereon and that the same was prepared by me or under my direct supervision and that I am a duly licensed professional engineer in the State of South Carolina.

CAROLINA SURVEYING
112 MANLY ST
GREENVILLE, S.C.

R. B. Masley
R.M.C.

206 632 1106
306 683 1106

5.00 cr 2