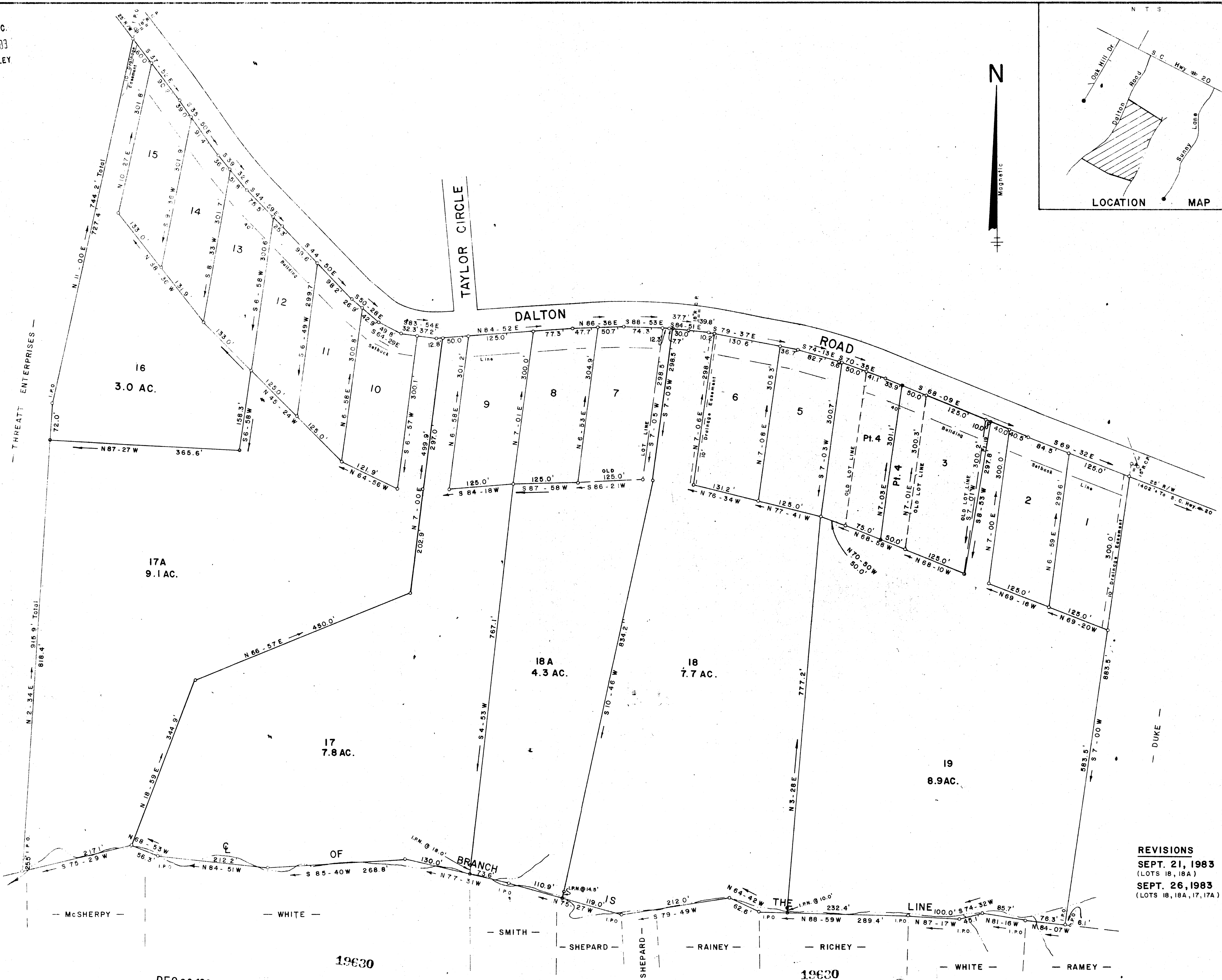
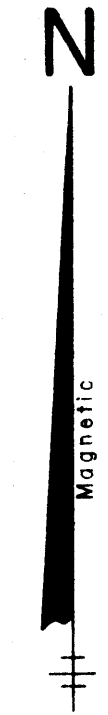
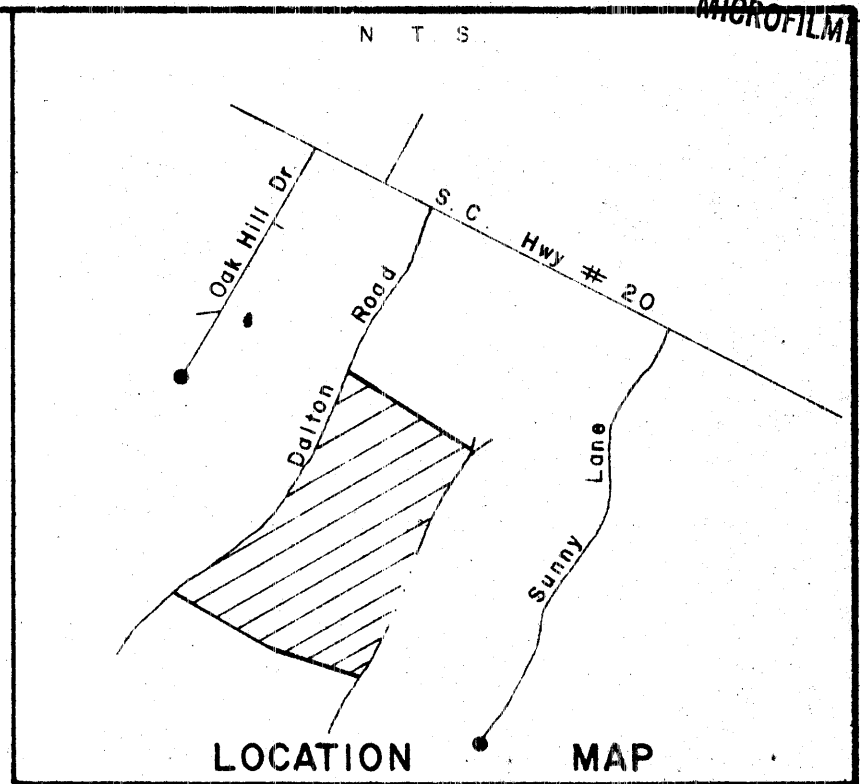


FILED  
GREENVILLE CO. S.C.  
DEC 20 9 13 AM '83  
DUNNIE E. LANNERSLEY  
R.M.C.



**REVISIONS**  
SEPT. 21, 1983  
(LOTS 18, 18A)  
SEPT. 26, 1983  
(LOTS 18, 18A, 17, 17A)

DEC 20 1983

DEC 20 1983

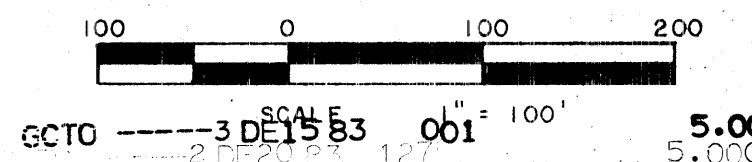
10A-65

10A-66

**DALTON WOODS**  
PROPERTY OF  
**G. E. MANN & R. A. BAILEY**  
NEAR PIEDMONT GREENVILLE CO.  
SOUTH CAROLINA

THIS PLAT IS NOT A SUBDIVISION  
AS DEFINED BY THE GREENVILLE  
COUNTY SUBDIVISION REGULATIONS.  
12/15/83 *Stephen W. Tanner*  
Chairman, Secretary, or Director of  
Planning  
Greenville County Planning Commission

53.0 ACRES TOTAL



Iron Pins At All Property Corners  
There is a 5' Drainage and Utility  
Easement On Each Side of All Side  
And Rear Lot Lines, And a 10'  
Drainage Easement Along Natural  
Grains.

**JEFFERY M. PLUMBLEE, INC.**  
LAND SURVEYING

I Hereby Certify That The Ratio Of Precision  
Of The Field Surveys is 1/5000 As  
Shown Hereon, And The Area Was Determined  
By D.M.B. Method.  
*Jeffery M. Plumlee*  
R.L.S. No. 7881