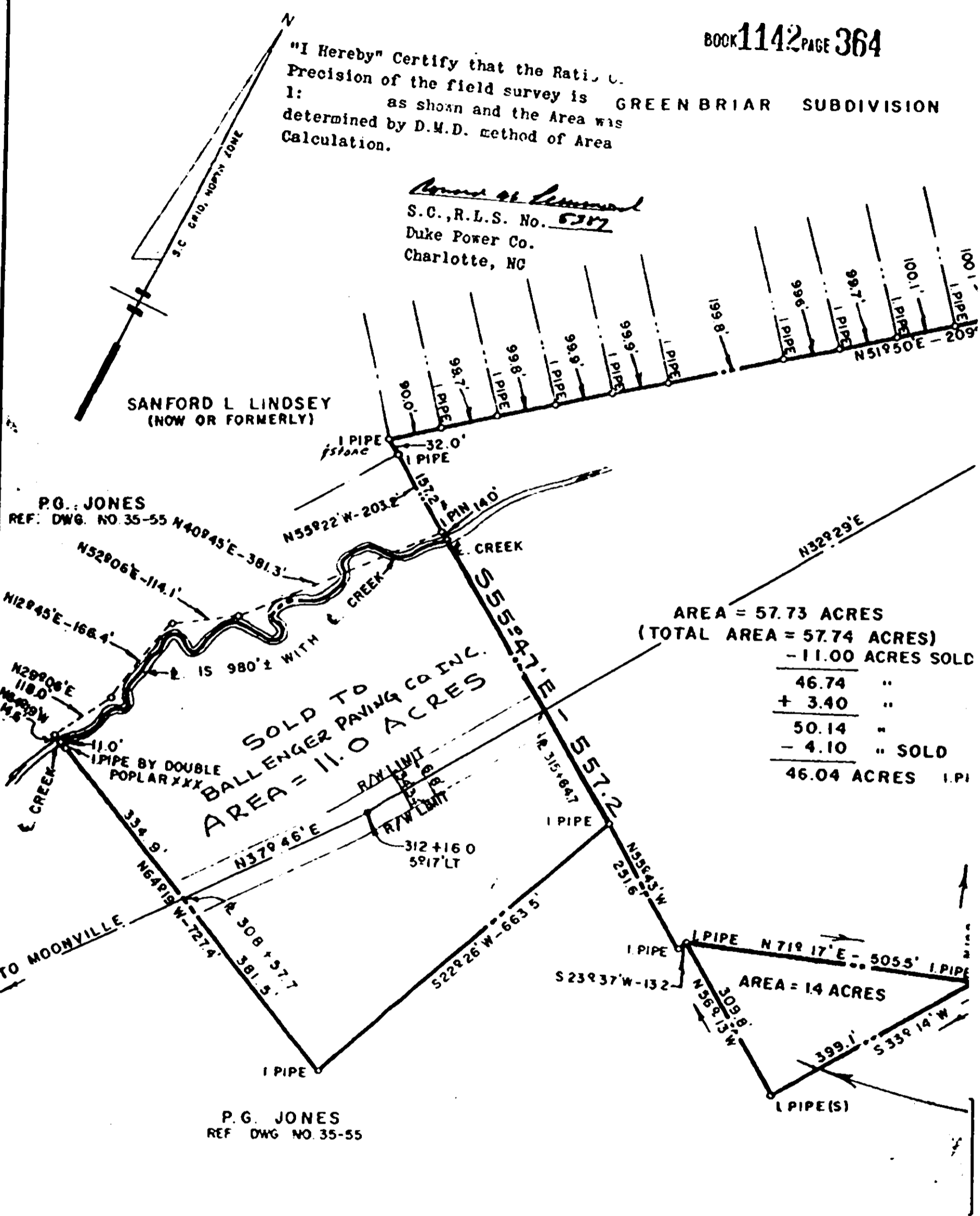


"I Hereby" Certify that the Ratio of Precision of the field survey is GREEN BRIAR SUBDIVISION as shown and the Area was determined by D.M.D. method of Area Calculation.

*James H. Linnard*  
S.C., R.L.S. No. 5317  
Duke Power Co.  
Charlotte, NC



AREA = 57.73 ACRES
(TOTAL AREA = 57.74 ACRES)
- 11.00 ACRES SOLD
46.74 "
+ 3.40 "
50.14 "
- 4.10 " SOLD
46.04 ACRES I.P.I.

SOLD TO  
BALLENGER PAVING CO INC.  
AREA = 11.0 ACRES

NOTE: LAND EXCHANGE WITH  
BALLENGER PAVING CO., INC., ET AL.  
2-20-80

(CONTINUED ON NEXT PAGE)

TO. NO. 8524

0364

4328 RV-2