

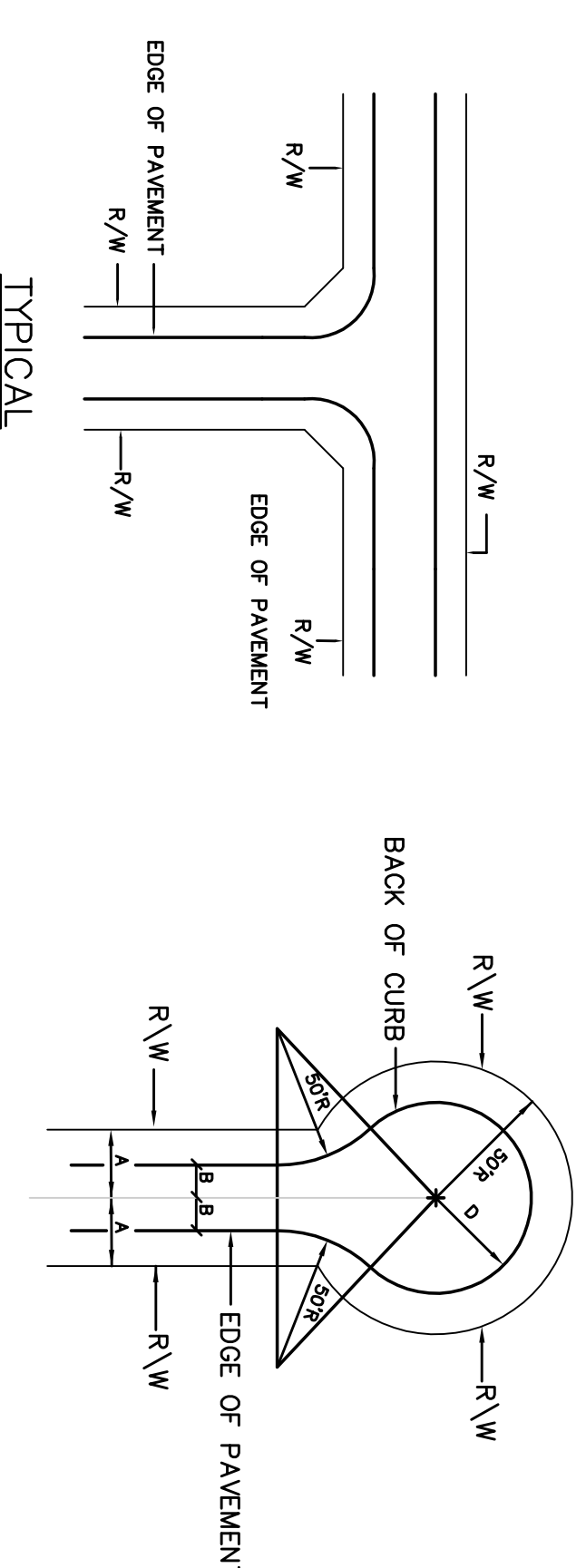
LINE	LENGTH	AREA
L1	16.88'	0.22 ac
L2	16.88'	0.22 ac
L3	9.32'	0.12 ac
L4	6.41'	0.08 ac
L5	6.31'	0.08 ac

LEGEND

GROSS ACREAGE: 14.81 AC.
 14.44 acres @ 3.6 UNITS/AC. (R-12)
 51.98 LOTS
 0.37 acres @ 1.2 UNITS/AC. (RS)
 0.44 LOTS
 52 UNITS
 43 UNITS
 14.44 @ 15% = 2.17 AC.
 0.37 @ 30% = 0.11
 TOTAL = 2.28

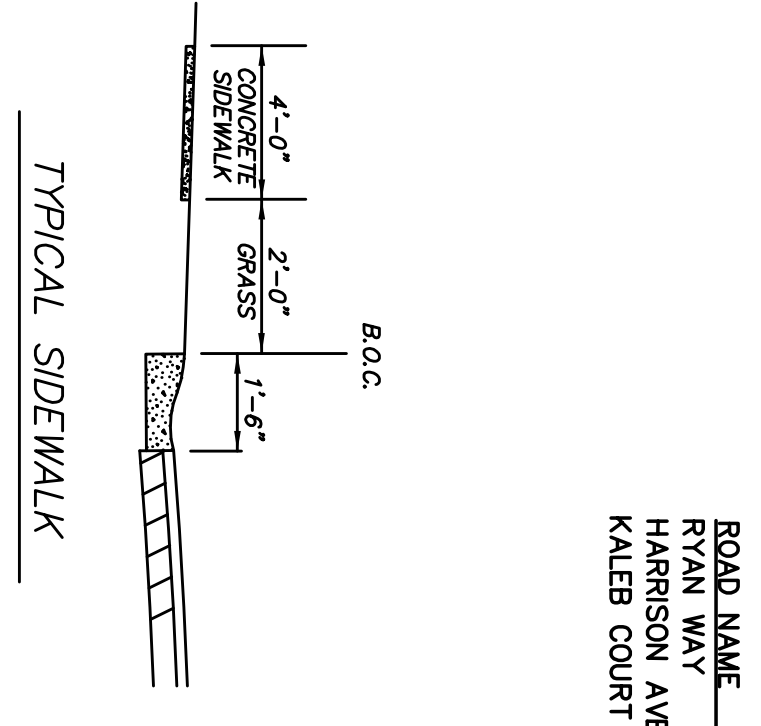
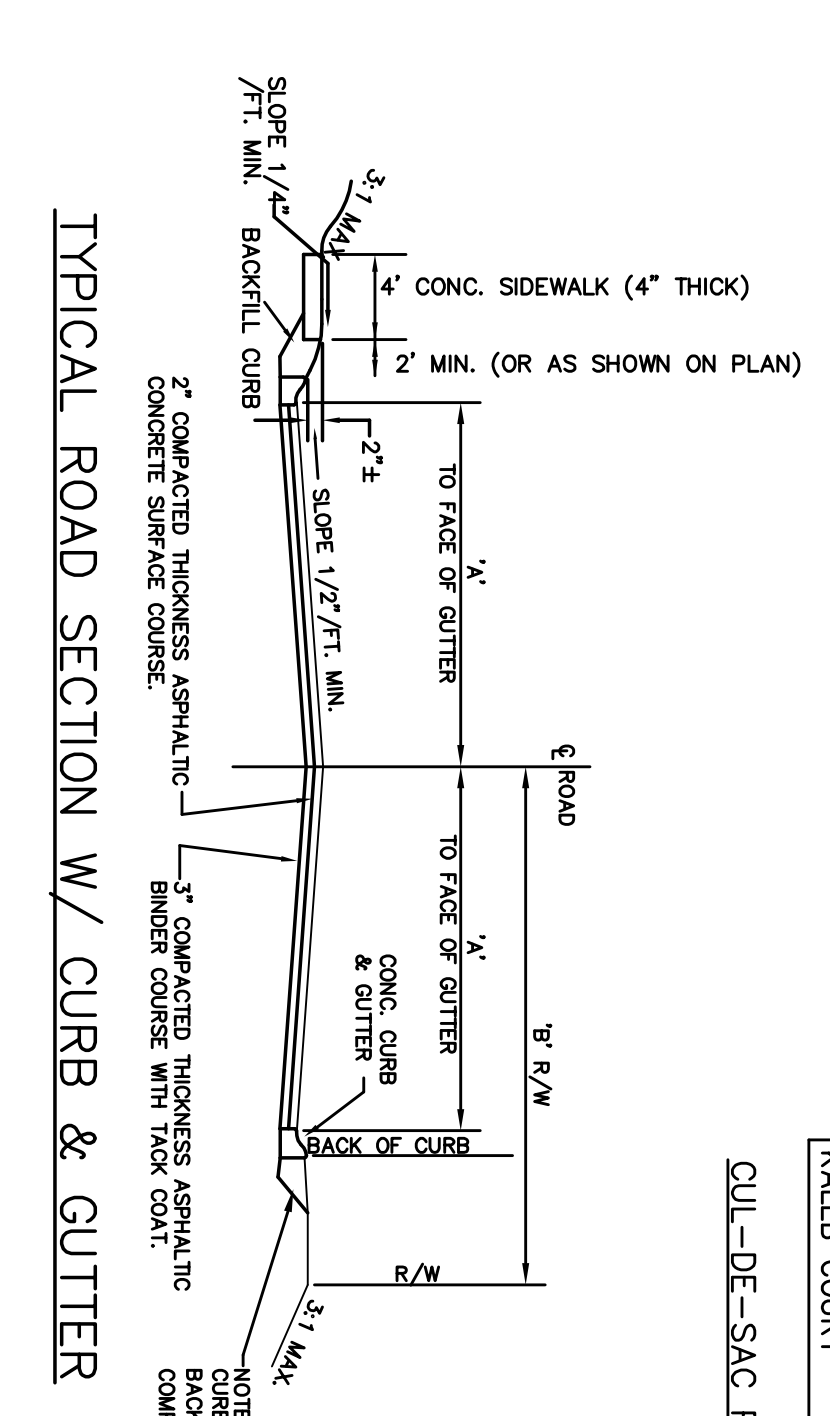
OPEN SPACE PROVIDED:
 FLOODPLAIN/STEEP SLOPES: 3.30 AC.
 DEVELOPABLE LAND: 2.11 AC.
 1.19 AC.

- NOTES:**
- 1.) REFERENCE:
 - TMS # PT OF 5481-1-10
 - PLAT BY LANDMARK SURVEYING, INC. DATED 9-13-04
 - FOR CRESCENT DEVELOPMENT, INC. DATED 9-13-04
 - TOPOGAPCAL INFORMATION BY LANDMARK SURVEYING, INC. FOR CRESCENT DEVELOPMENT, INC. DATED 9-13-04
 - 2.) * - AGREEMENT INCLUDES ANY AND ALL RIGHTS-OF-WAY OF RECORD OR NOT OF RECORD.
 - 3.) COUNTOUR INTERVAL: 2'
 - 4.) THERE IS A 5' DRAINAGE AND UTILITIES EASEMENT EACH SIDE OF ALL INTERIOR LOT LINES AND 10' DRAINAGE AND UTILITIES EASEMENT INSIDE OF EXTERIOR LOT LINES.
 - 5.) TOTAL AREA: 14.81 ACRES

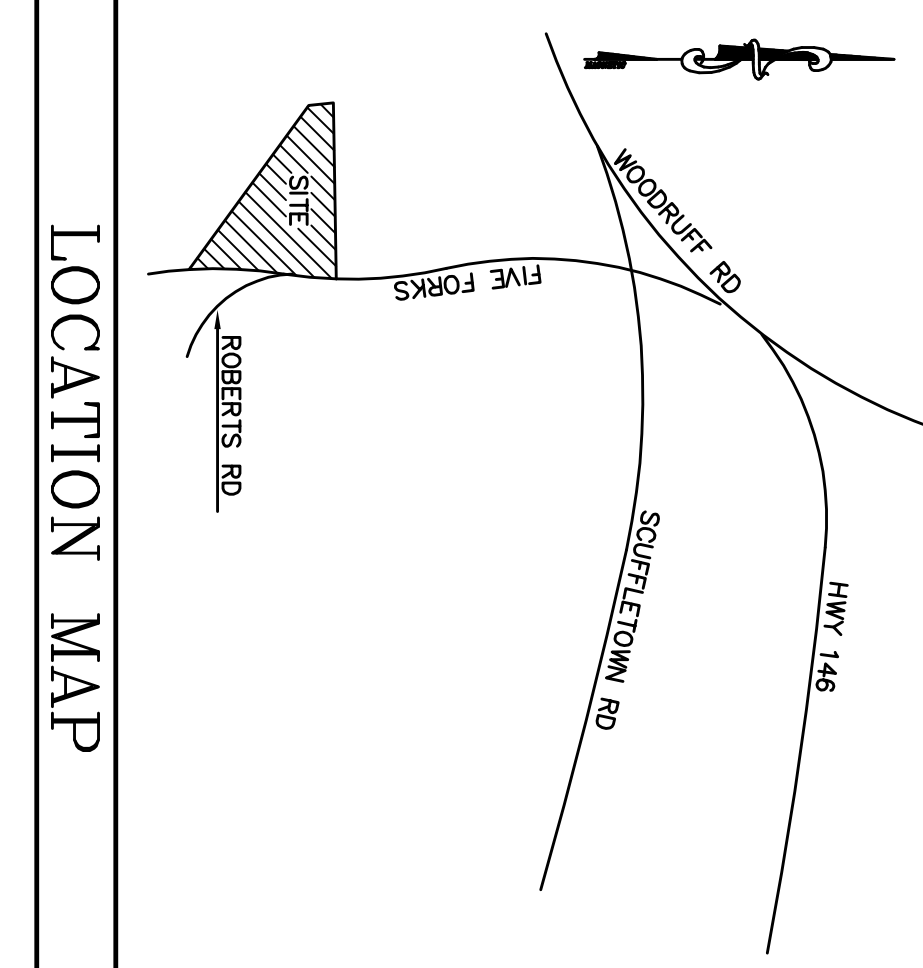
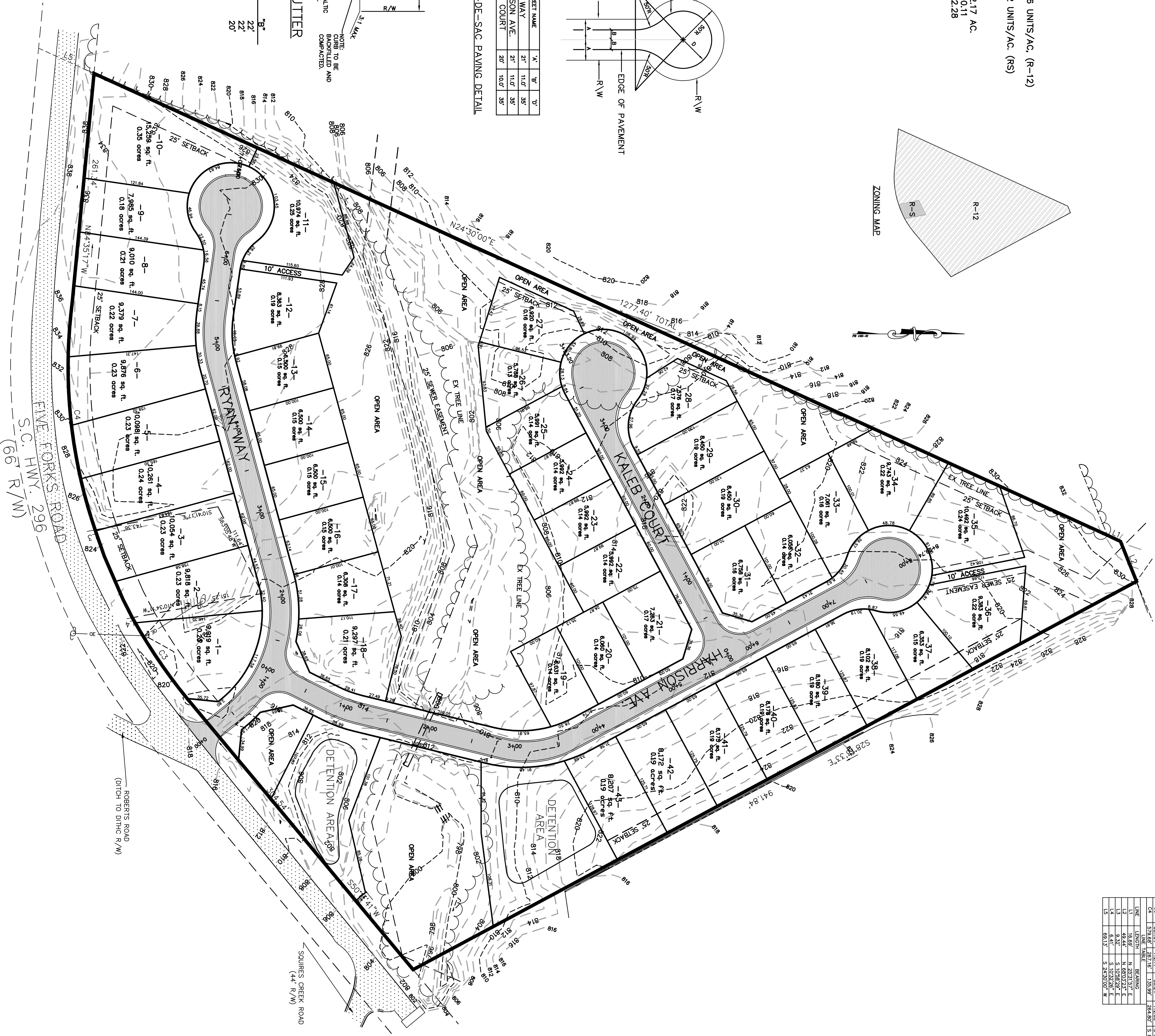
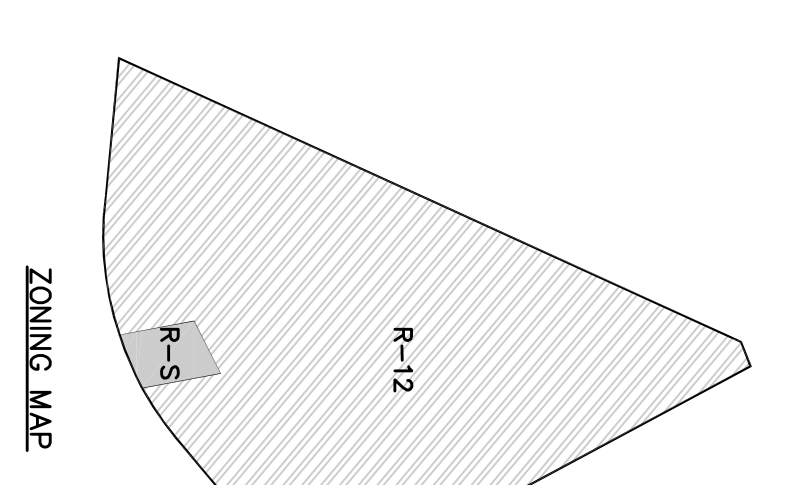


CUL-DE-SAC PAVING DETAIL

STREET NAME	X'	Y'	Z'
RYAN WAY	21'	11.0'	35'
HARRISON AVE.	21'	11.0'	35'
KALEB COURT	20'	10.0'	35'



LOCAL RESIDENTIAL STREETS
 N.T.S.



PRELIMINARY PLAN

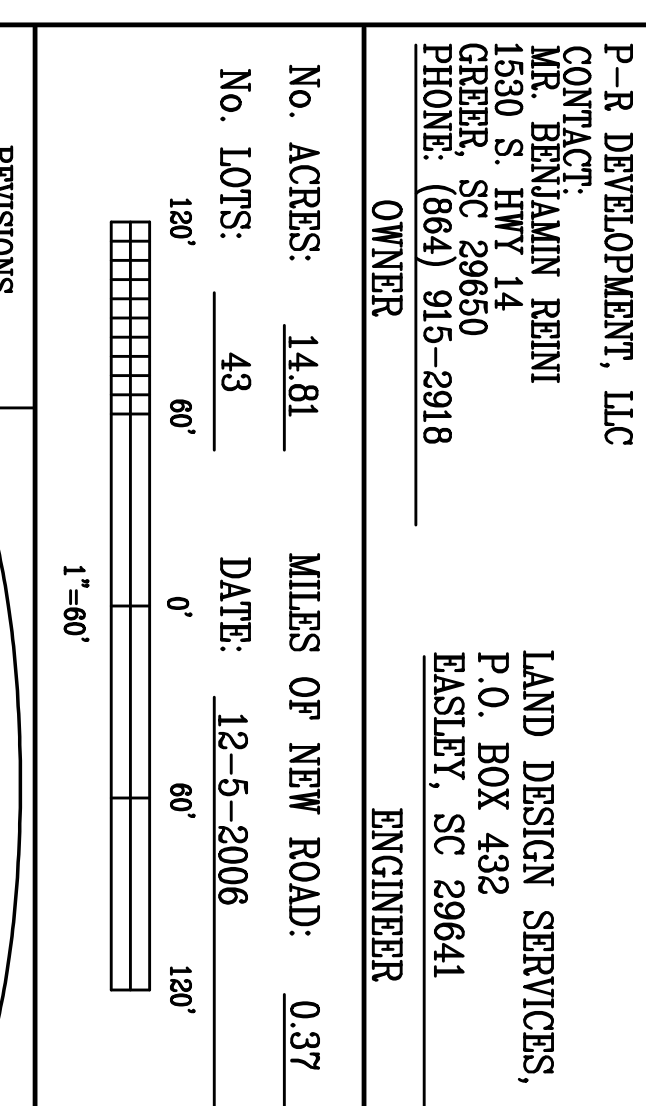
HARRISON COVE

P-R DEVELOPMENT, LLC
 CONTACT: MR. BENJAMIN REINI
 1530 S. HNT 14
 GREEN, SC 29650
 PHONE: (864) 915-2918

LAND DESIGN SERVICES, INC.
 P.O. BOX 432
 EASLEY, SC 29641

OWNER: ENGINEER

No. ACRES: 14.81 MILES OF NEW ROAD: 0.37
 No. LOTS: 43 DATE: 12-5-2006



LAND DESIGN SERVICES, INC.
 Civil Engineering, Land Planning & Consulting
 P.O. Box 432 - Easley, SC 29641 • (864) 947-7227

DRAWN BY: KR PROJECT NO: L-04-89