



## Arbor Engineering, Inc.

Box 263 • Greenville, S.C. 29602  
(864) 235-3589 FAX (864) 233-6274

August 2, 2006

Patricia Webb  
Subdivision Administrator  
Greenville County Planning Commission  
301 University Ridge, Suite 400  
Greenville, South Carolina  
29601-3660

**VA-2006-05**

RE: High Grove Subdivision Variance Request  
Greenville County S/D #: 04-236  
Arbor Job #: 03234.03

Ms. Webb,

In due process, as outlined for recording a final plat for a subdivision in a Planned Development, we have sought and received approval for landscaping within a round-about, from the following county entities:

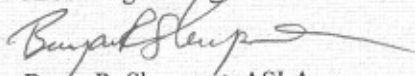
- Approved landscaping plan in accordance with Planned Development ordinance from Planning
- Approved engineering drawings from Engineering Department
- Approval of County Engineer concerning raised planters within the round-about
- Approved and recorded Final Plat for Phase One of High Grove Subdivision

However, as construction is about to begin and to be in accordance with the Land Development Regulations for Greenville County, we are requesting a variance on behalf of the developer and builder for a non-standard traffic island.

The traffic island, which is a round-about with a 70-foot radius, will have landscape features such as raised planting beds (less than three feet high) and an arbor, as well as plat material. All landscape features and landscaping will be at least twenty-four feet from face-of-curb. This is well out of any right of way that is typically dedicated to the county for public roads. Since Greenville County does not accept ownership or maintenance of the areas within traffic islands or round-about, we believe that this variance should be approved.

Please call with any questions or comments.

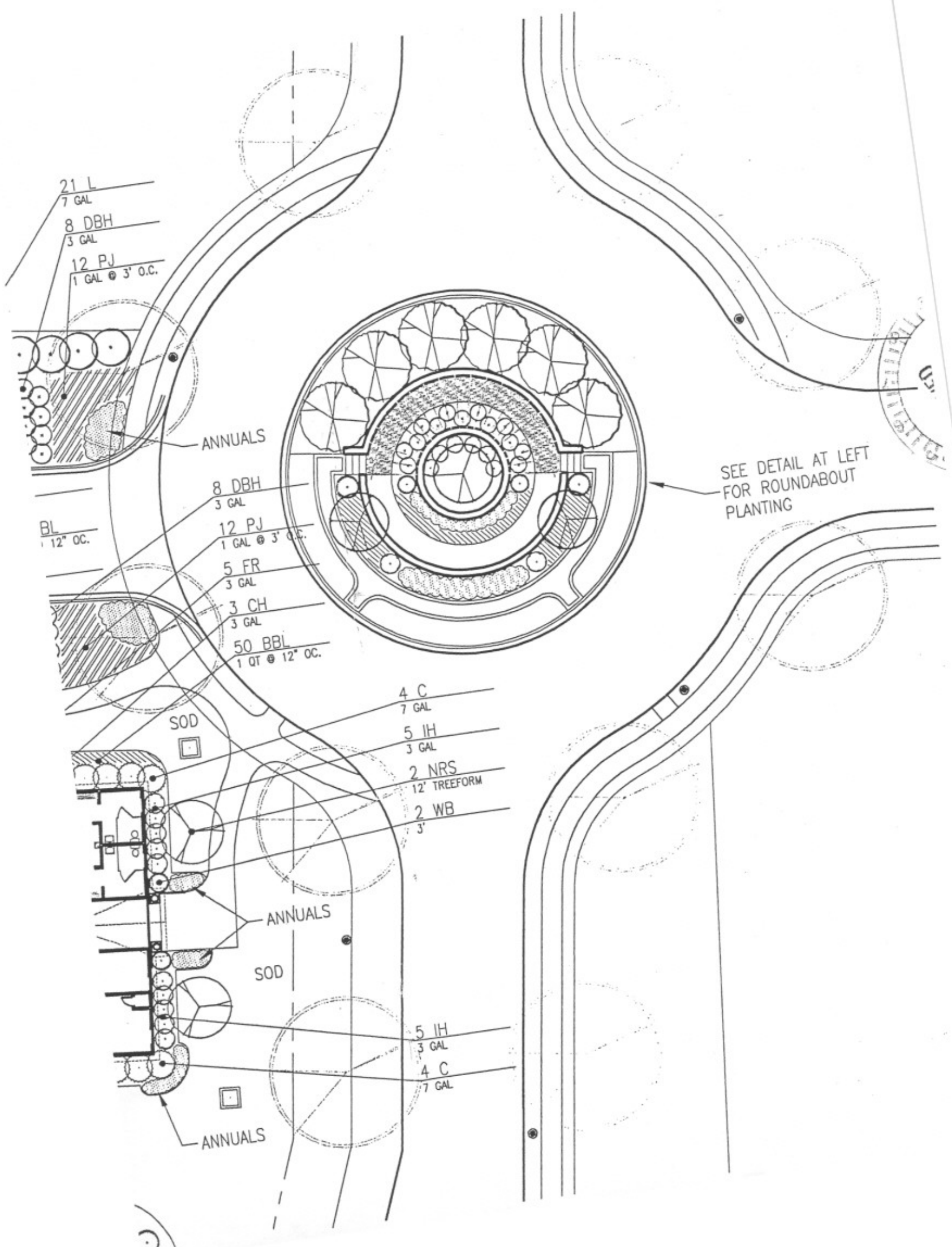
Sincerely,  
Arbor Engineering, Inc.



Bryan R. Shumpert, ASLA

Cc: Jay Ratterree, Youngblood Development  
Ken Padgett, Ryan Homes  
Walden Jones, Sinclair and Associates

**Landscape Architects • Civil Engineers • Recreational Planners  
Land Surveyors • Land Planners**



21 L  
7 GAL  
8 DBH  
3 GAL  
12 PJ  
1 GAL @ 3' O.C.

ANNUALS

BL  
12" OC.

8 DBH  
3 GAL  
12 PJ  
1 GAL @ 3' O.C.  
5 FR  
3 GAL  
3 CH  
3 GAL  
50 BBL  
1 QT @ 12" OC.

SEE DETAIL AT LEFT  
FOR ROUNDABOUT  
PLANTING

SOD

4 C  
7 GAL  
5 IH  
3 GAL  
2 NRS  
12' TREEFORM  
2 WB  
3'

ANNUALS

SOD

5 IH  
3 GAL  
4 C  
7 GAL

ANNUALS

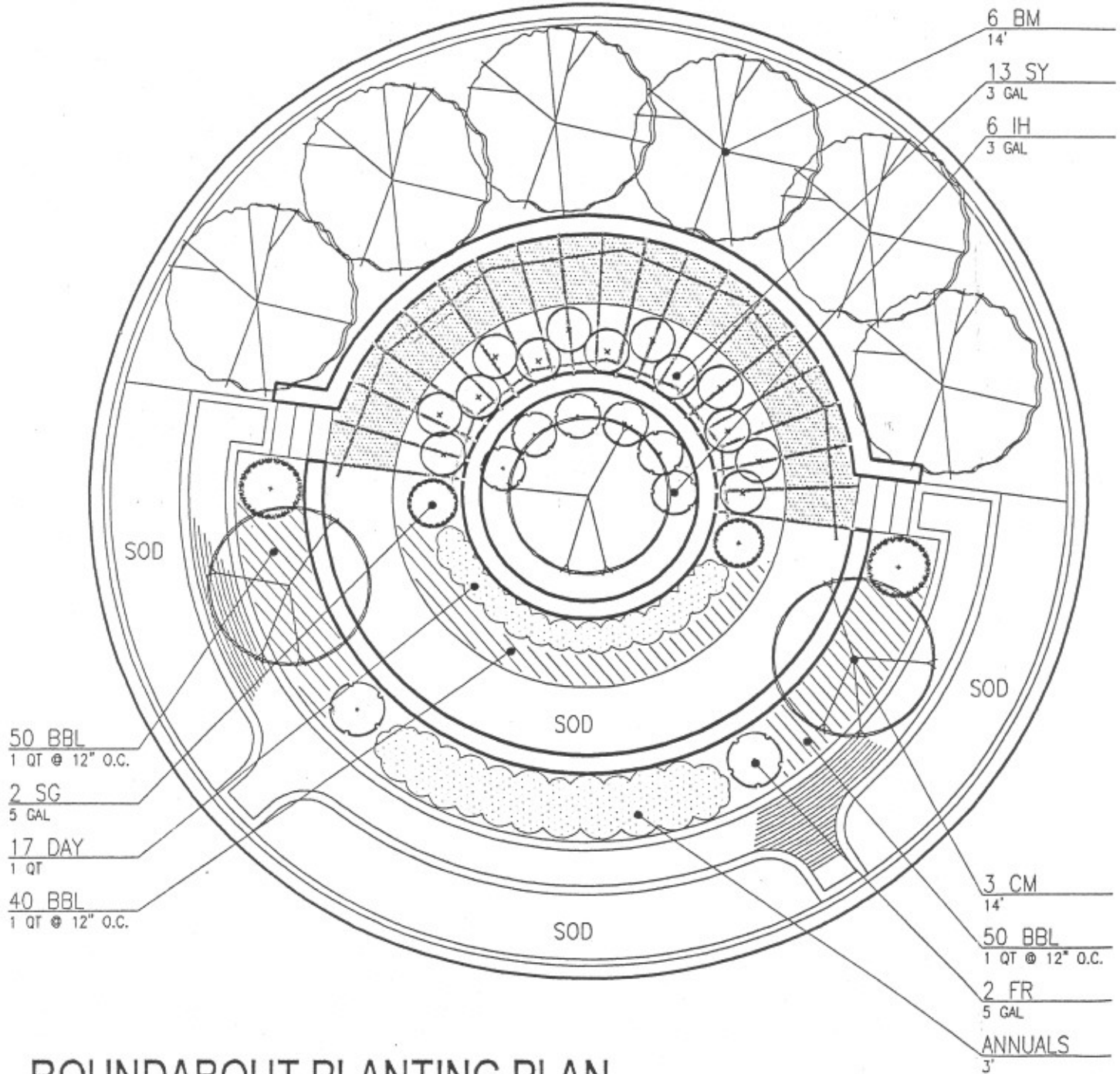
PALMETTO UTILITY LOCATION SERVICE



3 DAYS BEFORE DIGGING CALL  
TOLL FREE 1-800-922-0983

A ONE CALL SYSTEM FOR COMMUNITY AND JOB SAFETY.

THE UTILITIES SHOWN ARE SHOWN FOR THE CONTRACTOR'S CONVENIENCE ONLY. THERE MAY BE OTHER UTILITIES NOT SHOWN ON THESE PLANS. THE SURVEYOR ASSUMES NO RESPONSIBILITY FOR THE LOCATIONS SHOWN AND IT SHALL BE THE CONTRACTOR'S RESPONSIBILITY TO VERIFY THE LOCATIONS OF ALL UTILITIES WITHIN THE LIMITS OF THE WORK. ALL DAMAGE MADE TO EXISTING UTILITIES BY THE CONTRACTOR SHALL BE THE SOLE RESPONSIBILITY OF THE CONTRACTOR.



# ROUNABOUT PLANTING PLAN

SCALE: 1"=10'