

LOT #	AREA (sq.ft.)
1	7,233
2	7,433
3	7,876
4	8,273
5	8,020
6	8,889
7	8,644
8	7,200
9	7,195
10	9,287
11	7,199
12	6,766
13	14,096
14	11,775
15	15,576
16	15,434
17	6,766
18	7,200
19	9,287
20	9,988
21	8,988
22	9,732
23	8,379
24	13,146
25	14,044
26	14,044
27	7,374
28	7,200
29	7,495
30	10,668
31	12,837
32	9,638
33	7,200
34	7,200
35	7,199
36	7,199
37	7,199
38	10,405
39	11,726
40	8,305
41	8,301
42	7,949
43	7,314

UTILITIES

SANITARY SEWER: METROPOLITAN SEWER- 277-4442
 WATER: GREENVILLE WATER SYSTEM, 241-6100
 POWER: DUNE POWER, 234-4130
 GAS: FLEMING NATURAL GAS, 233-5844
 PHONE: BELLSOUTH, 253-5853
 CABLE: CHARTER COMMUNICATIONS, 877-9683

- NOTES:
1. TAX MAP 539.2+1-2.3. 2. ZONING: R-15 CLUSTER
 2. EACH ROAD HAS A RW WIDTH OF 44'.
 3. EACH CUL-DE-SAC HAS A RW RADIUS OF 50'.
 4. ALL DETENTION AND COMMON AREAS TO BE OWNED AND MAINTAINED BY THE HOMEOWNERS ASSOCIATION. GREENVILLE COUNTY IS NOT RESPONSIBLE FOR THE MAINTENANCE OF DETENTION AREAS OR COMMON AREAS.

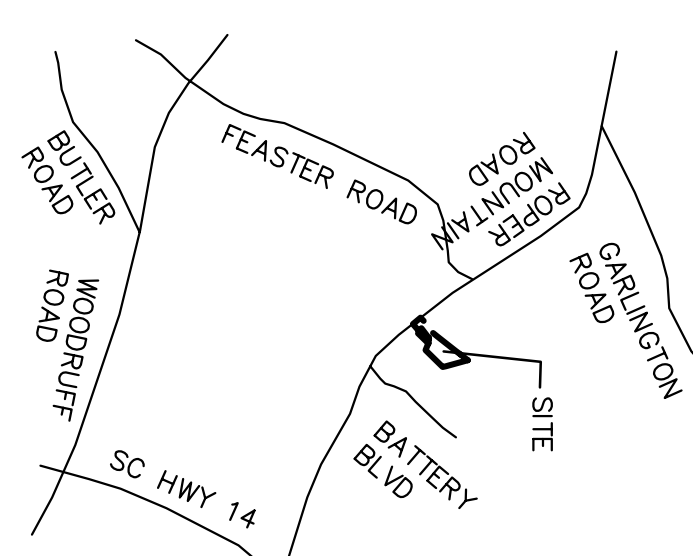
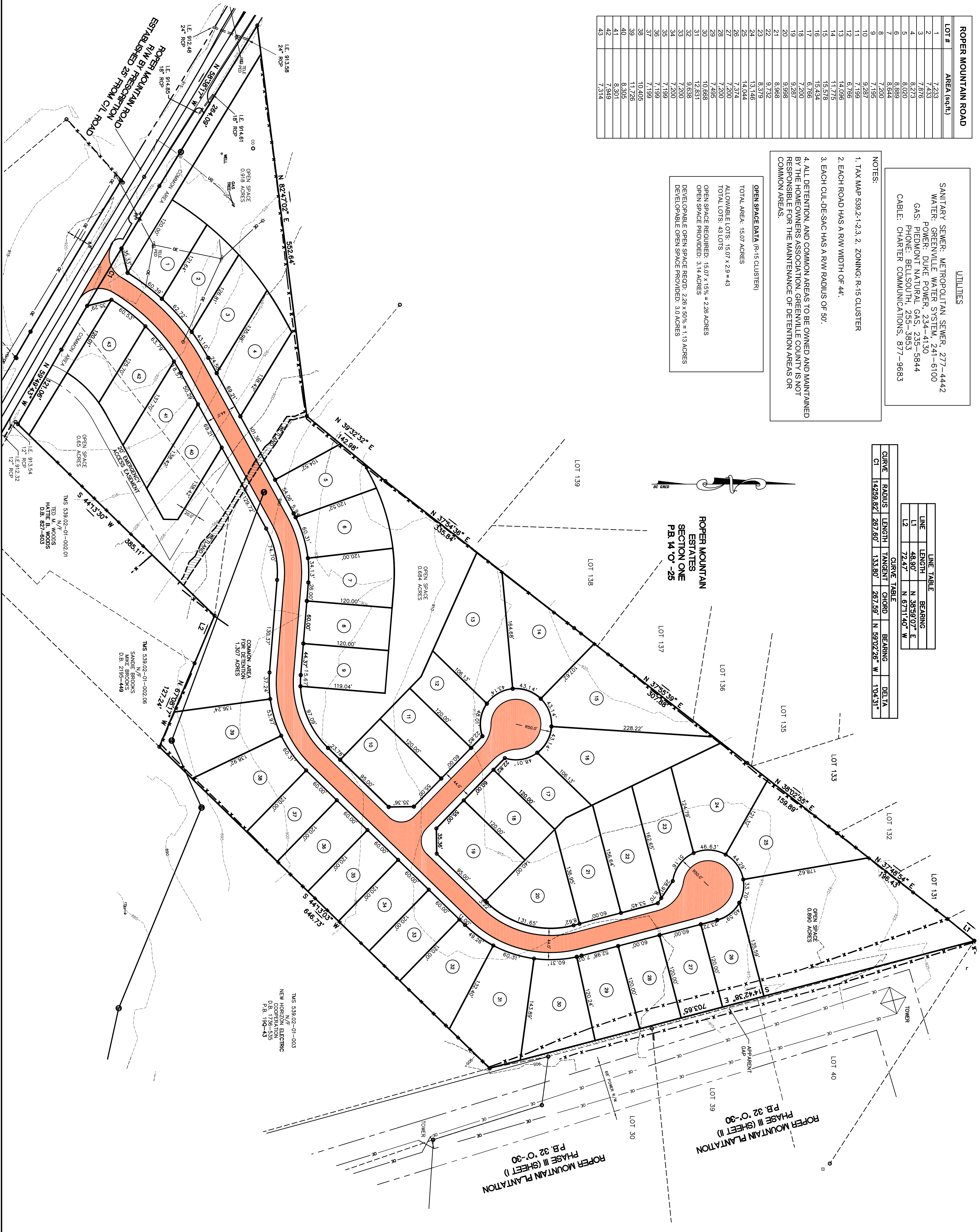
OPEN SPACE DATA (R-15 CLUSTER)
 TOTAL AREA: 15.07 ACRES
 ALLOWABLE LOTS: 15.07 x 2.9 = 43
 TOTAL LOTS: 43 LOTS
 OPEN SPACE REQUIRED: 15.07 x 15% = 2.26 ACRES
 OPEN SPACE PROVIDED: 3.14 ACRES
 DEVELOPABLE OPEN SPACE PROVIDED: 3.0 ACRES

LINE	LENGTH	BEARING
L1	48.90'	N 89°59'07" E
L2	72.47'	N 87°11'40" W

CURVE	RADIUS	LENGTH	TANGENT	CHORD	BEARING	DELTA
C1	14259.82'	267.60'	133.80'	267.59'	N 89°02'26" W	104°31'



ROPER MOUNTAIN ESTATES SECTION ONE P.B. 14 '0' -25



LOCATION MAP

PRELIMINARY

THE OAKS AT ROPER MOUNTAIN

FOCUS 1, LLC
 1000 W. PINE BLVD.
 MALDEN, S.C. 29662
 (864) 286-8006 FAX (864) 220-6158

FREELAND & ASSOCIATES, INC.
 1000 W. PINE BLVD.
 GREENVILLE, S.C. 29609
 (864) 271-4924 FAX (864) 233-0315

OWNER SURVEYOR

NO. OF ACRES: 15.07
 NO. OF LOTS: 43
 ZONING: R-15 CLUSTER
 MILES OF NEW ROAD: 0.34
 DATE: 8-2-06

