

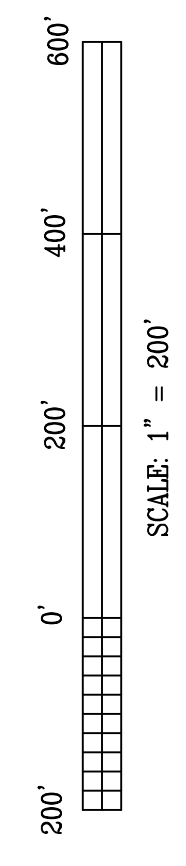
VICINITY MAP

PRELIMINARY PLAN

RIVERSWAY

HALL PROPERTIES, LLC FANT, REICHERT, & FOGLEMAN, INC.  
OWNER ENGINEER

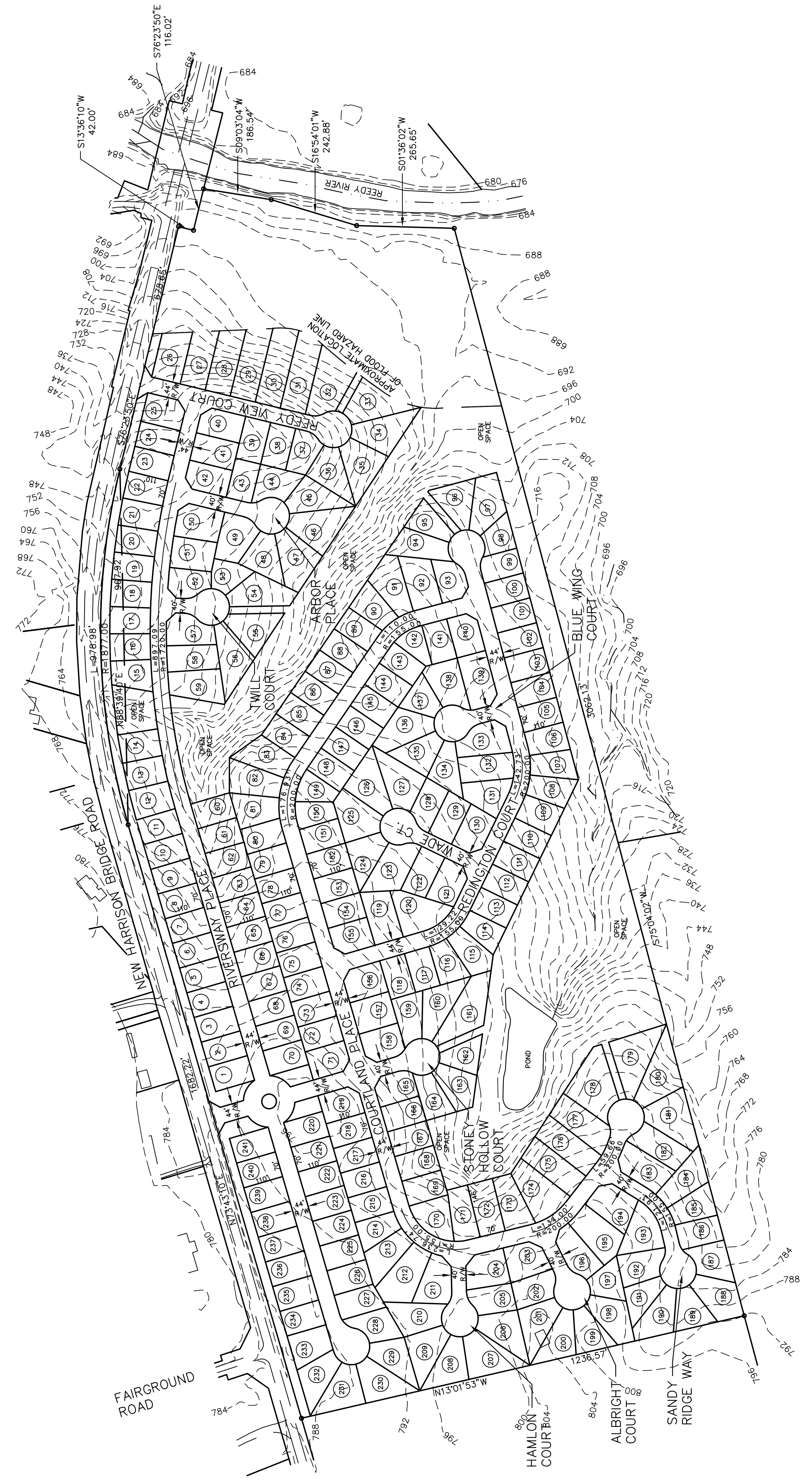
No. ACRES: 86.2 MILES OF NEW ROAD: 1.8  
No. LOTS: 241 DATE: 6-07-06



REVISIONS	
No.	DATE
1	
2	
3	
4	
5	
6	

BY: **FRF** FANT, REICHERT & FOGLEMAN, INC.  
725 LOWMIDDS HILL ROAD GREENVILLE, SC 29607  
ENGINEERING & SURVEYING

PROJECT NO. 06078  
DRAWN BY: ERW



- Notes:
- Boundary and topographic survey by others.
  - No vehicular access to New Harrison bridge Road from newly created lots. Interior access only.

LEGEND:

Gross Acreage:	86.2 Ac.
Permitted Density:	R-15 2.9 Lots/Acre
Total Lots Allowed:	86.2 x 2.9 = 250
Total Lots Shown:	241
Required Open Space:	12.93 Ac.
Open Space Provided:	21.66 Ac.



06078P.DWG