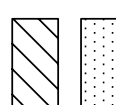
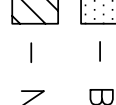
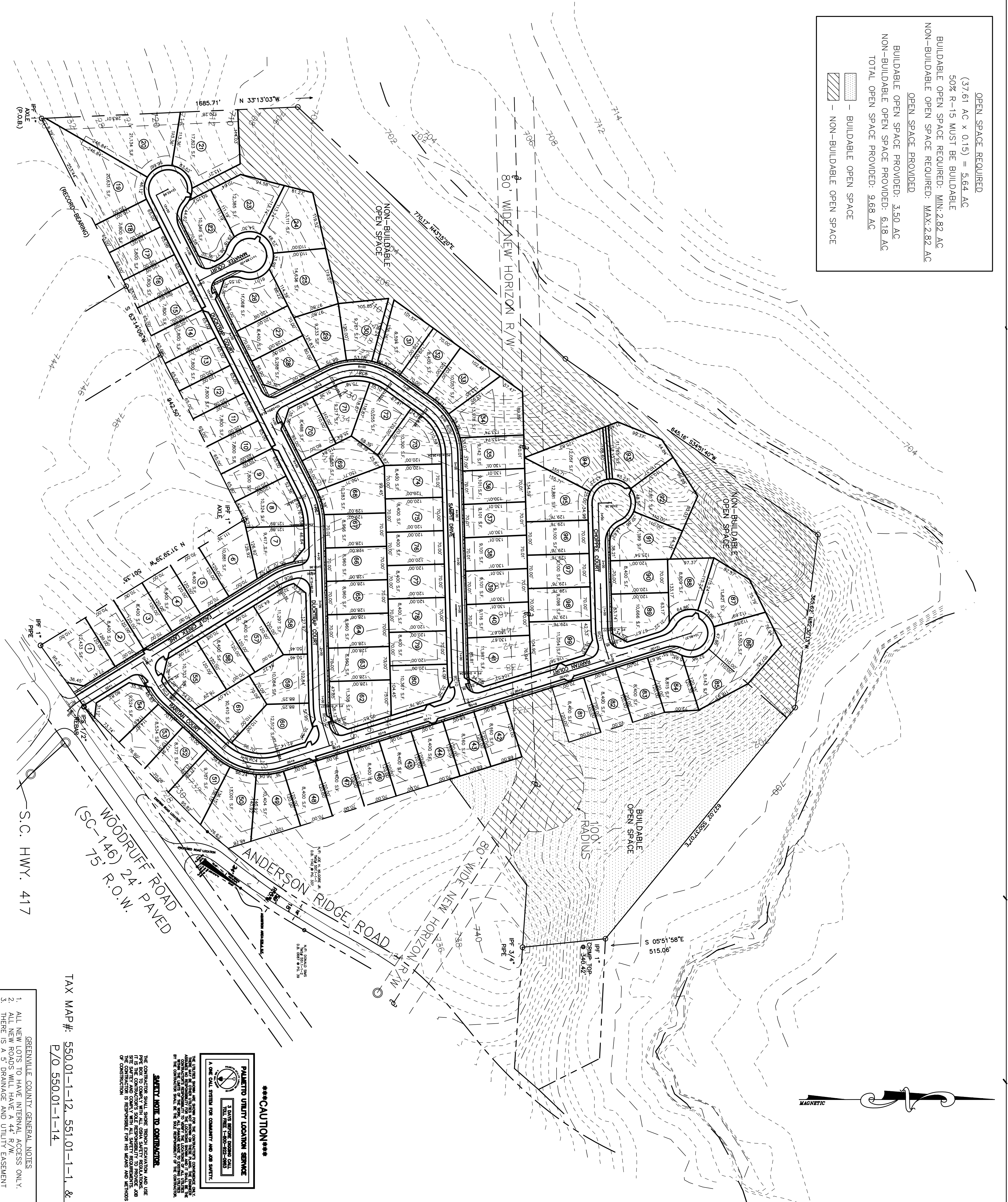


OPEN SPACE REQUIRED
 (37.61 AC x 0.15) = 5.64 AC
 50% R-15 MUST BE BUILDABLE
 BUILDABLE OPEN SPACE REQUIRED: MIN: 2.82 AC
 NON-BUILDABLE OPEN SPACE REQUIRED: MAX: 2.82 AC
 OPEN SPACE PROVIDED
 BUILDABLE OPEN SPACE PROVIDED: 3.50 AC
 NON-BUILDABLE OPEN SPACE PROVIDED: 5.18 AC
 TOTAL OPEN SPACE PROVIDED: 9.68 AC

 - BUILDABLE OPEN SPACE
 - NON-BUILDABLE OPEN SPACE



SETBACKS:
 50' SETBACK OFF WOODRUFF RD
 20' FRONT SETBACK
 25' SETBACK ALONG ALL EXTERIOR PROPERTY LINES

- TAX MAP #: 550.01-1-12, 551.01-1-1, & P/O 550.01-1-14
- GREENVILLE COUNTY GENERAL NOTES
1. ALL NEW LOTS TO HAVE INTERIOR ACCESS ONLY.
 2. THERE IS A 5' DRAINAGE AND UTILITY EASEMENT ALONG EACH SIDE OF ALL INTERIOR LOT LINES AND A 10' DRAINAGE AND UTILITY EASEMENT INSIDE ALL EXTERIOR LOT LINES, EXCEPT WHERE NOTED.
 3. A STORMWATER MANAGEMENT PLAN AND SEDIMENT REDUCTION PLAN HAS BEEN PREPARED FOR THIS PROJECT. EACH PROPERTY OWNER WILL COMPLY WITH THIS PLAN UNLESS AN INDIVIDUAL PLAN IS PREPARED AND APPROVED FOR THAT PROPERTY. GREENVILLE COUNTY IS NOT RESPONSIBLE FOR THE MAINTENANCE OF THE DETENTION AREA.

OWNER
 TULEY & TULEY, INC.
 1950 NORTH PARK PLACE
 ATLANTA, GA 30339
 770-964-2298

ENGINEER
 GRAY ENGINEERING
 RODNEY GRAY, P.E.
 132 PILGRIM ROAD
 GREENVILLE, SC 29607
 864-287-5027

NO. OF ADJACENT LOTS: 88
 NO. OF ADJACENT LOTS: 88
 DATE: APR 4, 2006

GRAPHIC SCALE
 1" = 100'
 1 inch = 100 ft

SAVANNAH
 POINTE
 TYPE OF DEVELOPMENT: R-15(CLUSTER)

NO. OF ADJACENT LOTS: 88
 NO. OF ADJACENT LOTS: 88
 DATE: APR 4, 2006

GRAPHIC SCALE
 1" = 100'
 1 inch = 100 ft

*****CAUTION*****

PLUMBING UTILITY LOCATION SERVICE

1 LINE SERVICE LOCATING CALL
 24 HOUR SERVICE
 TOLL FREE 1-800-222-0800

A ONE CALL SYSTEM FOR COMMUNITY AND JOB SAFETY!

SAFETY NOTE TO CONTRACTOR

THE CONTRACTOR SHALL SHORE, BRACE, PROTECT, AND USE THE ROW TO COMPLY WITH ALL OSHA SAFETY REGULATIONS. THE CONTRACTOR SHALL BE RESPONSIBLE FOR THE LOCATION OF ALL UTILITIES AND SHALL BE RESPONSIBLE FOR THE SAFETY OF ALL PERSONNEL AND EQUIPMENT. THE CONTRACTOR SHALL BE RESPONSIBLE FOR THE SAFETY OF ALL PERSONNEL AND EQUIPMENT. THE CONTRACTOR SHALL BE RESPONSIBLE FOR THE SAFETY OF ALL PERSONNEL AND EQUIPMENT.

SAVANNAH
 POINTE
 TYPE OF DEVELOPMENT: R-15(CLUSTER)

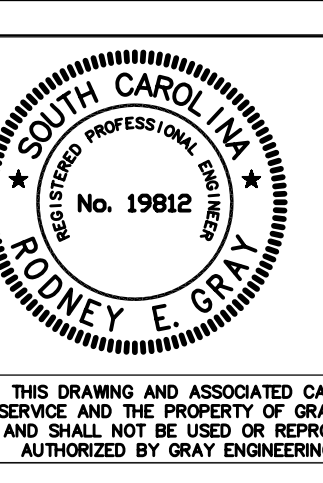
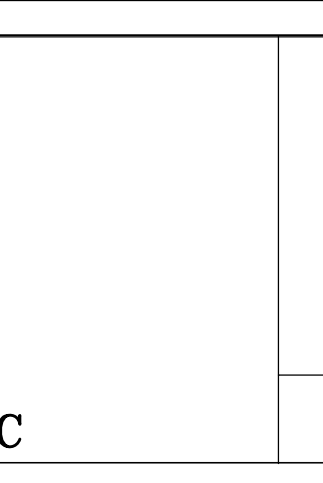
NO. OF ADJACENT LOTS: 88
 NO. OF ADJACENT LOTS: 88
 DATE: APR 4, 2006

GRAPHIC SCALE
 1" = 100'
 1 inch = 100 ft

PRELIMINARY PLAT

**SAVANNAH
 POINTE**

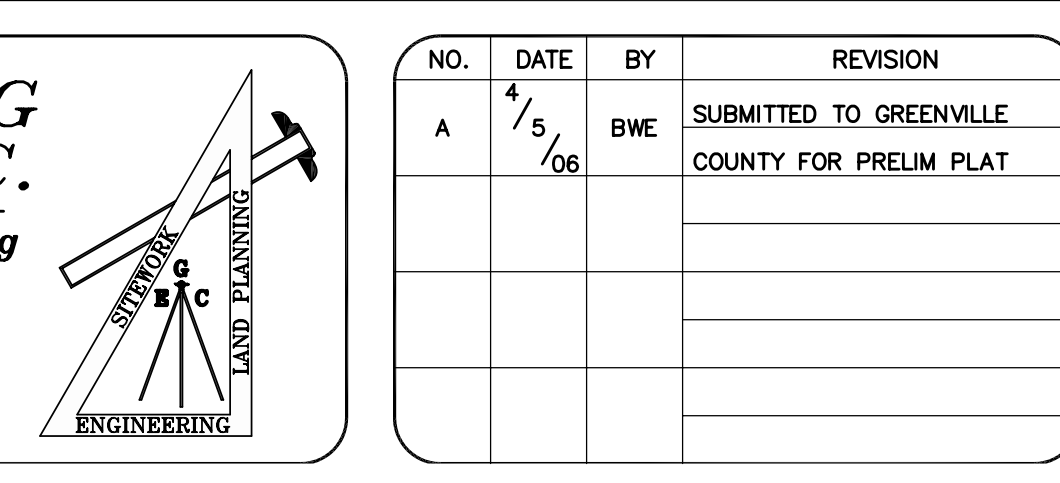
WOODRUFF ROAD
 GREENVILLE COUNTY, SC



**GRAY ENGINEERING
 CONSULTANTS, INC.**
 engineering · sitework · land planning

132 PILGRIM ROAD GREENVILLE, SC 29607
 PH: (864) 297-3027 FAX: (864) 297-5187
 GRAY @ GRAYENGINEERING.COM

NO.	DATE	BY	REVISION
A	4/5/06	BWE	SUBMITTED TO GREENVILLE COUNTY FOR PRELIM PLAT



SAVANNAH-PRELIM.DWG