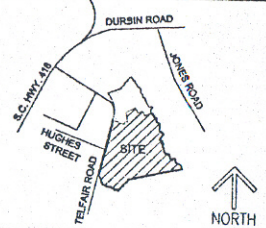
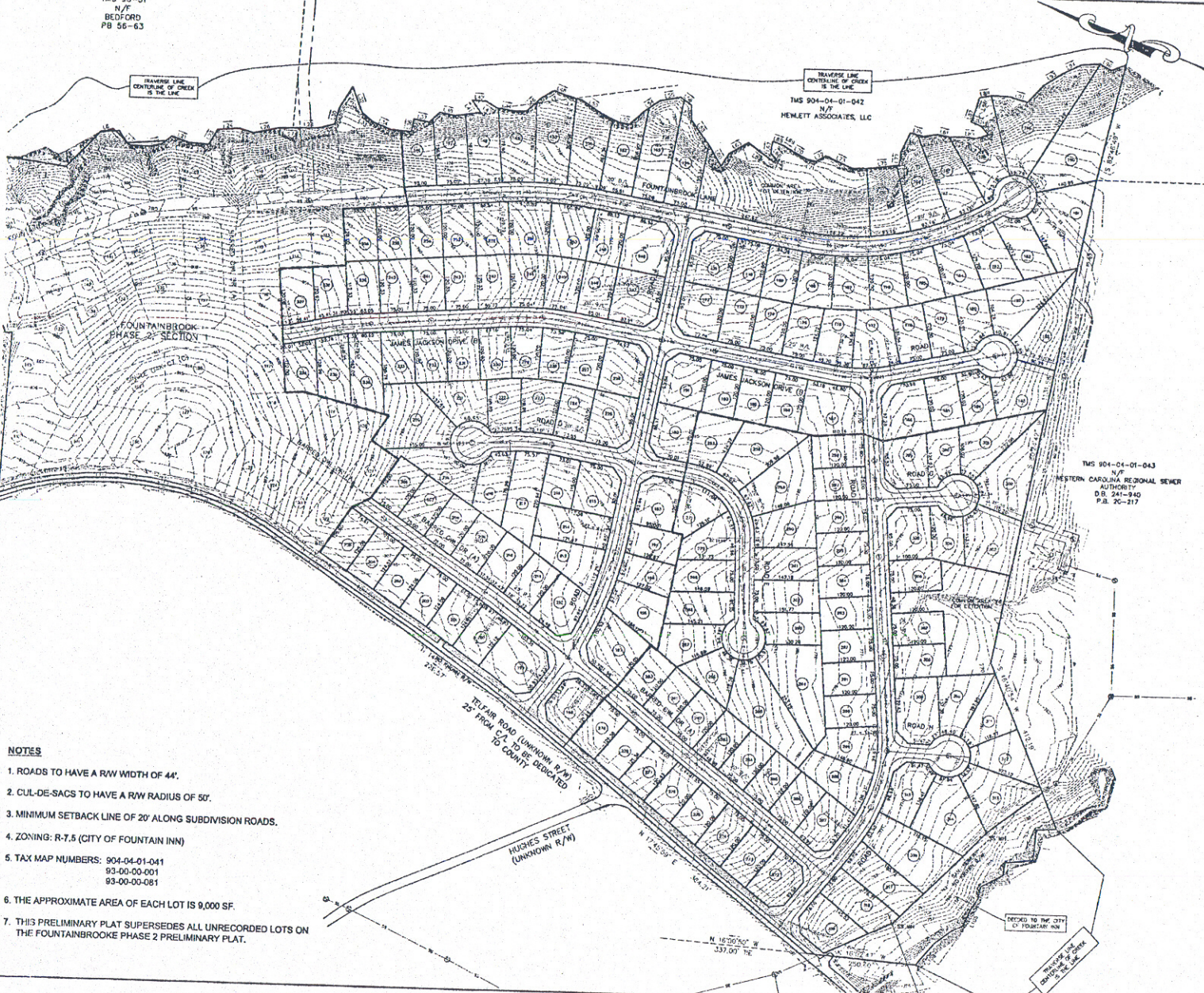


TMS 93-31
N/F
BEDFORD
PB 56-63

TRANSVERSE LINE
CONTINUITY OF CREEK
IS THE LINE

TRANSVERSE LINE
CONTINUITY OF CREEK
IS THE LINE
TMS 904-04-01-042
N/F
HEMLETT ASSOCIATES, LLC

TMS 904-04-01-043
N/F
WESTERN CAROLINA REGIONAL SEWER
AUTHORITY
D.B. 241-242
P.B. 26-27



LOCATION MAP

- NOTES**
1. ROADS TO HAVE A R/W WIDTH OF 44'.
 2. CUL-DE-SACS TO HAVE A R/W RADIUS OF 50'.
 3. MINIMUM SETBACK LINE OF 20' ALONG SUBDIVISION ROADS.
 4. ZONING: R-7.5 (CITY OF FOUNTAIN INN)
 5. TAX MAP NUMBERS: 904-04-01-041
93-00-00-001
93-00-00-081
 6. THE APPROXIMATE AREA OF EACH LOT IS 9,000 SF.
 7. THIS PRELIMINARY PLAT SUPERSEDES ALL UNRECORDED LOTS ON THE FOUNTAINBROOKE PHASE 2 PRELIMINARY PLAT.

PRELIMINARY

04-257

**FOUNTAINBROOKE
PHASE 3**

CENTER HOMES 7008 PELHAM AVE, SUITE W GREENVILLE, SC 29615 (803) 795-8600 DW/CH	PRELAND & ASSOCIATES, INC. 323 ACES STONE AVE. GREENVILLE, S.C. 29601 (804) 271-4800 FAX (804) 233-0315 SURVEYOR/ENGINEER
---	---

NO. OF ACRES: 58.89	MAILES OF NEW ROAD: 1.65
NO. OF LOTS: 174	DATE: 12-01-04
ZONING: R-7.5 (FOUNTAIN INN)	

