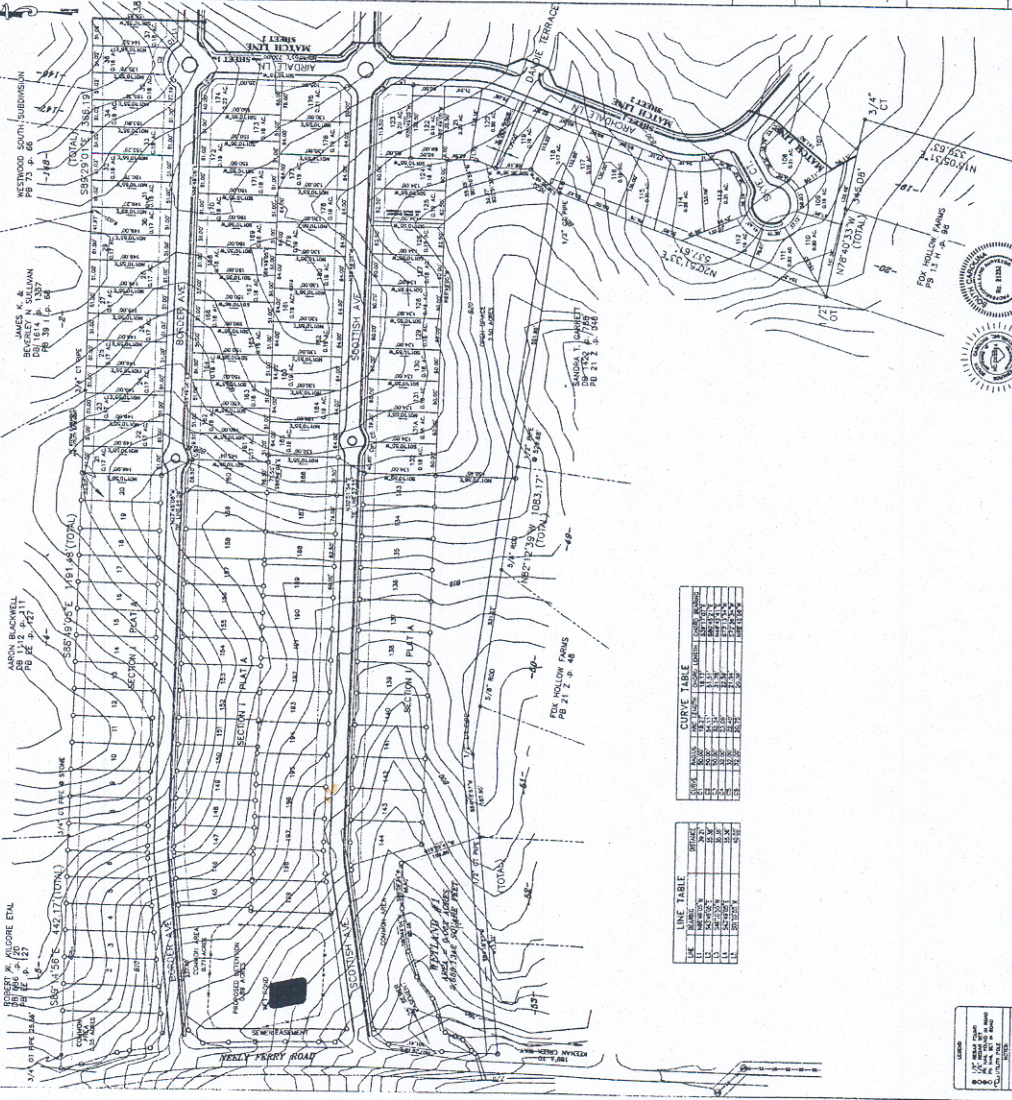


MLB Engineering LLC  
408 SOUTH ALMOND DRIVE  
SIMPSONVILLE, SOUTH CAROLINA 29881  
PHONE: (264) 952-8112



**SOUTHERN**  
LAND SURVEYING  
11471 ASHESVILLE HWY  
INMAN, SC 29349  
864-473-1540



ROBERT M. VIGORE ET AL  
DB 112 p. 127  
DB 113 p. 127

ARON BLACKBURN  
DB 112 p. 211  
DB 113 p. 247

JAMES K. &  
DEBRA L. HANCOCK  
DB 114 p. 64  
DB 115 p. 64

550.69 ± 0.02' E 191.68' (TOTAL)  
104.51 ± 0.19' S 88.00' W 104.51' (TOTAL)

RESTWOOD SOUTH SUBDIVISION  
PT 13 p. 65  
PT 14 p. 65

104.51 ± 0.19' S 88.00' W 104.51' (TOTAL)

104.51 ± 0.19' S 88.00' W 104.51' (TOTAL)

104.51 ± 0.19' S 88.00' W 104.51' (TOTAL)

104.51 ± 0.19' S 88.00' W 104.51' (TOTAL)

104.51 ± 0.19' S 88.00' W 104.51' (TOTAL)

104.51 ± 0.19' S 88.00' W 104.51' (TOTAL)

104.51 ± 0.19' S 88.00' W 104.51' (TOTAL)

104.51 ± 0.19' S 88.00' W 104.51' (TOTAL)

104.51 ± 0.19' S 88.00' W 104.51' (TOTAL)

104.51 ± 0.19' S 88.00' W 104.51' (TOTAL)

104.51 ± 0.19' S 88.00' W 104.51' (TOTAL)

104.51 ± 0.19' S 88.00' W 104.51' (TOTAL)

104.51 ± 0.19' S 88.00' W 104.51' (TOTAL)

104.51 ± 0.19' S 88.00' W 104.51' (TOTAL)

104.51 ± 0.19' S 88.00' W 104.51' (TOTAL)

104.51 ± 0.19' S 88.00' W 104.51' (TOTAL)

104.51 ± 0.19' S 88.00' W 104.51' (TOTAL)

104.51 ± 0.19' S 88.00' W 104.51' (TOTAL)

104.51 ± 0.19' S 88.00' W 104.51' (TOTAL)

104.51 ± 0.19' S 88.00' W 104.51' (TOTAL)

104.51 ± 0.19' S 88.00' W 104.51' (TOTAL)

104.51 ± 0.19' S 88.00' W 104.51' (TOTAL)

104.51 ± 0.19' S 88.00' W 104.51' (TOTAL)

104.51 ± 0.19' S 88.00' W 104.51' (TOTAL)

104.51 ± 0.19' S 88.00' W 104.51' (TOTAL)

104.51 ± 0.19' S 88.00' W 104.51' (TOTAL)

104.51 ± 0.19' S 88.00' W 104.51' (TOTAL)

104.51 ± 0.19' S 88.00' W 104.51' (TOTAL)

104.51 ± 0.19' S 88.00' W 104.51' (TOTAL)

104.51 ± 0.19' S 88.00' W 104.51' (TOTAL)

104.51 ± 0.19' S 88.00' W 104.51' (TOTAL)

104.51 ± 0.19' S 88.00' W 104.51' (TOTAL)

104.51 ± 0.19' S 88.00' W 104.51' (TOTAL)

104.51 ± 0.19' S 88.00' W 104.51' (TOTAL)

104.51 ± 0.19' S 88.00' W 104.51' (TOTAL)

104.51 ± 0.19' S 88.00' W 104.51' (TOTAL)

104.51 ± 0.19' S 88.00' W 104.51' (TOTAL)

104.51 ± 0.19' S 88.00' W 104.51' (TOTAL)

104.51 ± 0.19' S 88.00' W 104.51' (TOTAL)

104.51 ± 0.19' S 88.00' W 104.51' (TOTAL)

104.51 ± 0.19' S 88.00' W 104.51' (TOTAL)

104.51 ± 0.19' S 88.00' W 104.51' (TOTAL)

104.51 ± 0.19' S 88.00' W 104.51' (TOTAL)

104.51 ± 0.19' S 88.00' W 104.51' (TOTAL)

104.51 ± 0.19' S 88.00' W 104.51' (TOTAL)

104.51 ± 0.19' S 88.00' W 104.51' (TOTAL)

104.51 ± 0.19' S 88.00' W 104.51' (TOTAL)

104.51 ± 0.19' S 88.00' W 104.51' (TOTAL)

104.51 ± 0.19' S 88.00' W 104.51' (TOTAL)

104.51 ± 0.19' S 88.00' W 104.51' (TOTAL)

104.51 ± 0.19' S 88.00' W 104.51' (TOTAL)

104.51 ± 0.19' S 88.00' W 104.51' (TOTAL)

104.51 ± 0.19' S 88.00' W 104.51' (TOTAL)

104.51 ± 0.19' S 88.00' W 104.51' (TOTAL)

104.51 ± 0.19' S 88.00' W 104.51' (TOTAL)

104.51 ± 0.19' S 88.00' W 104.51' (TOTAL)

104.51 ± 0.19' S 88.00' W 104.51' (TOTAL)

104.51 ± 0.19' S 88.00' W 104.51' (TOTAL)

104.51 ± 0.19' S 88.00' W 104.51' (TOTAL)

104.51 ± 0.19' S 88.00' W 104.51' (TOTAL)

104.51 ± 0.19' S 88.00' W 104.51' (TOTAL)

104.51 ± 0.19' S 88.00' W 104.51' (TOTAL)

104.51 ± 0.19' S 88.00' W 104.51' (TOTAL)

104.51 ± 0.19' S 88.00' W 104.51' (TOTAL)

104.51 ± 0.19' S 88.00' W 104.51' (TOTAL)

104.51 ± 0.19' S 88.00' W 104.51' (TOTAL)

104.51 ± 0.19' S 88.00' W 104.51' (TOTAL)

104.51 ± 0.19' S 88.00' W 104.51' (TOTAL)

104.51 ± 0.19' S 88.00' W 104.51' (TOTAL)

104.51 ± 0.19' S 88.00' W 104.51' (TOTAL)

104.51 ± 0.19' S 88.00' W 104.51' (TOTAL)

104.51 ± 0.19' S 88.00' W 104.51' (TOTAL)

104.51 ± 0.19' S 88.00' W 104.51' (TOTAL)

104.51 ± 0.19' S 88.00' W 104.51' (TOTAL)

104.51 ± 0.19' S 88.00' W 104.51' (TOTAL)

104.51 ± 0.19' S 88.00' W 104.51' (TOTAL)

104.51 ± 0.19' S 88.00' W 104.51' (TOTAL)

104.51 ± 0.19' S 88.00' W 104.51' (TOTAL)

104.51 ± 0.19' S 88.00' W 104.51' (TOTAL)

104.51 ± 0.19' S 88.00' W 104.51' (TOTAL)

104.51 ± 0.19' S 88.00' W 104.51' (TOTAL)

104.51 ± 0.19' S 88.00' W 104.51' (TOTAL)

104.51 ± 0.19' S 88.00' W 104.51' (TOTAL)

104.51 ± 0.19' S 88.00' W 104.51' (TOTAL)

104.51 ± 0.19' S 88.00' W 104.51' (TOTAL)

104.51 ± 0.19' S 88.00' W 104.51' (TOTAL)

LOCATOR MAP

- NOTES:
- 1) AS A PRELIMINARY, A FOOT CANTONMENT & ALL SETBACKS ARE SHOWN AS MINIMUMS. ALL SETBACKS AND SETBACKS SHALL BE DETERMINED BY THE CITY ENGINEER. ALL SETBACKS SHALL BE DETERMINED BY THE CITY ENGINEER.
  - 2) ALL SETBACKS SHALL BE DETERMINED BY THE CITY ENGINEER.
  - 3) ALL SETBACKS SHALL BE DETERMINED BY THE CITY ENGINEER.
  - 4) OPEN SPACE AREAS WILL BE CARED BY THE HOMEOWNERS ASSOCIATION. THE ASSOCIATION WILL BE RESPONSIBLE FOR THE MAINTENANCE OF THE OPEN SPACE AREAS.
  - 5) FRONT - 20'
  - 6) TOTAL OPEN SPACE - 11.88 ACRES THIS SECTION.
  - 7) OTHER SPACES MAY NOT BE FURTHER SUBMITTED.

- TAX MAP AND  
LEGAL REFERENCES:
- ALL OF 0356-02-01-01-013.01
  - DB 1298 p. 252
  - ALL OF 0565-02-01-01-013.04
  - DB 1314 p. 247
  - PB 15 B p. 83
  - ALL OF 0566-02-01-01-013.06
  - DB 1314 p. 247
  - PB 15 B p. 83
  - ALL OF 0566-02-01-01-013.08
  - DB 1314 p. 247
  - PB 15 B p. 83
  - ALL OF 0566-02-01-01-013.10
  - DB 1314 p. 247
  - PB 15 B p. 83
  - ALL OF 0566-02-01-01-013.05
  - DB 1314 p. 247
  - PB 15 B p. 83
  - PART OF 0566-02-01-01-013.00
  - DB 1314 p. 247
  - PB 15 B p. 83

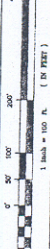
**03-219B**

PRELIMINARY PLAT FOR:  
**FOX TRACE SUBDIVISION**  
CITY OF SIMPSONVILLE

ZONING: PD

1. METEOROLOGICAL DATA  
2. SOIL DATA  
3. SURVEY DATA  
4. UTILITIES DATA  
5. ENVIRONMENTAL DATA  
6. OTHER DATA

DATE OF MAP: 03-15-2023  
DATE OF DATA: 03-15-2023  
DATE OF SURVEY: 03-15-2023



CURVE TABLE

STATION	CHORD BEARING	CHORD DISTANCE	ARC BEARING	ARC DISTANCE
1+00.00	S 88° 00' 00" W	104.51	88° 00' 00"	104.51
1+100.00	S 88° 00' 00" W	104.51	88° 00' 00"	104.51
1+200.00	S 88° 00' 00" W	104.51	88° 00' 00"	104.51
1+300.00	S 88° 00' 00" W	104.51	88° 00' 00"	104.51
1+400.00	S 88° 00' 00" W	104.51	88° 00' 00"	104.51
1+500.00	S 88° 00' 00" W	104.51	88° 00' 00"	104.51
1+600.00	S 88° 00' 00" W	104.51	88° 00' 00"	104.51
1+700.00	S 88° 00' 00" W	104.51	88° 00' 00"	104.51
1+800.00	S 88° 00' 00" W	104.51	88° 00' 00"	104.51
1+900.00	S 88° 00' 00" W	104.51	88° 00' 00"	104.51
2+000.00	S 88° 00' 00" W	104.51	88° 00' 00"	104.51
2+100.00	S 88° 00' 00" W	104.51	88° 00' 00"	104.51
2+200.00	S 88° 00' 00" W	104.51	88° 00' 00"	104.51
2+300.00	S 88° 00' 00" W	104.51	88° 00' 00"	104.51
2+400.00	S 88° 00' 00" W	104.51	88° 00' 00"	104.51
2+500.00	S 88° 00' 00" W	104.51	88° 00' 00"	104.51
2+600.00	S 88° 00' 00" W	104.51	88° 00' 00"	104.51
2+700.00	S 88° 00' 00" W	104.51	88° 00' 00"	104.51
2+800.00	S 88° 00' 00" W	104.51	88° 00' 00"	104.51
2+900.00	S 88° 00' 00" W	104.51	88° 00' 00"	104.51
3+000.00	S 88° 00' 00" W	104.51	88° 00' 00"	104.51
3+100.00	S 88° 00' 00" W	104.51	88° 00' 00"	104.51
3+200.00	S 88° 00' 00" W	104.51	88° 00' 00"	104.51
3+300.00	S 88° 00' 00" W	104.51	88° 00' 00"	104.51
3+400.00	S 88° 00' 00" W	104.51	88° 00' 00"	104.51
3+500.00	S 88° 00' 00" W	104.51	88° 00' 00"	104.51
3+600.00	S 88° 00' 00" W	104.51	88° 00' 00"	104.51
3+700.00	S 88° 00' 00" W	104.51	88° 00' 00"	104.51
3+800.00	S 88° 00' 00" W	104.51	88° 00' 00"	104.51
3+900.00	S 88° 00' 00" W	104.51	88° 00' 00"	104.51
4+000.00	S 88° 00' 00" W	104.51	88° 00' 00"	104.51
4+100.00	S 88° 00' 00" W	104.51	88° 00' 00"	104.51
4+200.00	S 88° 00' 00" W	104.51	88° 00' 00"	104.51
4+300.00	S 88° 00' 00" W	104.51	88° 00' 00"	104.51
4+400.00	S 88° 00' 00" W	104.51	88° 00' 00"	104.51
4+500.00	S 88° 00' 00" W	104.51	88° 00' 00"	104.51
4+600.00	S 88° 00' 00" W	104.51	88° 00' 00"	104.51
4+700.00	S 88° 00' 00" W	104.51	88° 00' 00"	104.51
4+800.00	S 88° 00' 00" W	104.51	88° 00' 00"	104.51
4+900.00	S 88° 00' 00" W	104.51	88° 00' 00"	104.51
5+000.00	S 88° 00' 00" W	104.51	88° 00' 00"	104.51
5+100.00	S 88° 00' 00" W	104.51	88° 00' 00"	104.51
5+200.00	S 88° 00' 00" W	104.51	88° 00' 00"	104.51
5+300.00	S 88° 00' 00" W	104.51	88° 00' 00"	104.51
5+400.00	S 88° 00' 00" W	104.51	88° 00' 00"	104.51
5+500.00	S 88° 00' 00" W	104.51	88° 00' 00"	104.51
5+600.00	S 88° 00' 00" W	104.51	88° 00' 00"	104.51
5+700.00	S 88° 00' 00" W	104.51	88° 00' 00"	104.51
5+800.00	S 88° 00' 00" W	104.51	88° 00' 00"	104.51
5+900.00	S 88° 00' 00" W	104.51	88° 00' 00"	104.51
6+000.00	S 88° 00' 00" W	104.51	88° 00' 00"	104.51
6+100.00	S 88° 00' 00" W	104.51	88° 00' 00"	104.51
6+200.00	S 88° 00' 00" W	104.51	88° 00' 00"	104.51
6+300.00	S 88° 00' 00" W	104.51	88° 00' 00"	104.51
6+400.00	S 88° 00' 00" W	104.51		