

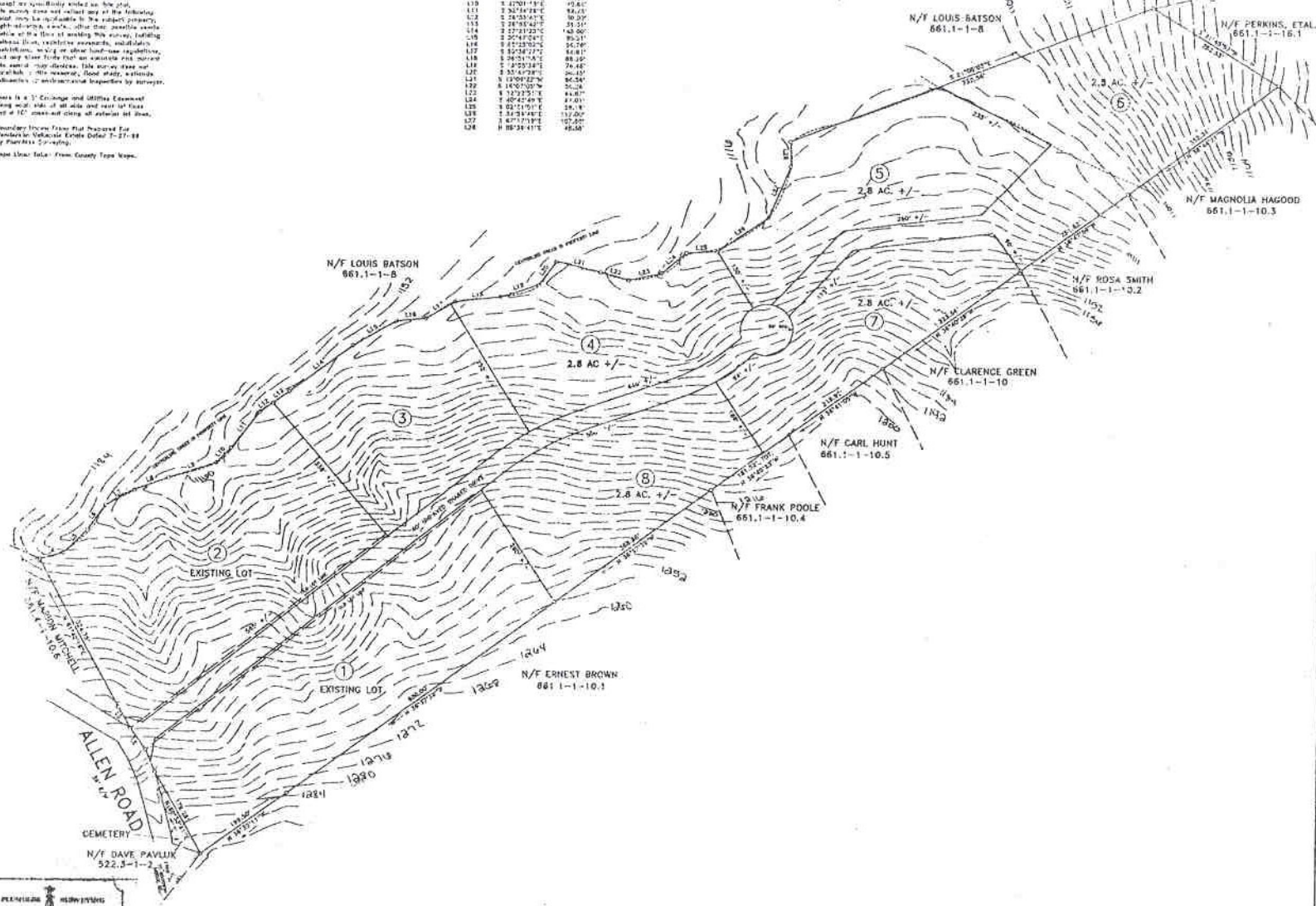
LEGEND:
 L.P.F. Iron Pin Found
 L.P.S. Iron Pin Set
 P.F. 1/2" Pin
 P.F. 3/4" Pin
 P.F. 1" Pin
 P.F. 1 1/2" Pin
 P.F. 2" Pin
 P.F. 3" Pin
 P.F. 4" Pin
 P.F. 5" Pin
 P.F. 6" Pin
 P.F. 7" Pin
 P.F. 8" Pin
 P.F. 9" Pin
 P.F. 10" Pin
 P.F. 11" Pin
 P.F. 12" Pin
 P.F. 13" Pin
 P.F. 14" Pin
 P.F. 15" Pin
 P.F. 16" Pin
 P.F. 17" Pin
 P.F. 18" Pin
 P.F. 19" Pin
 P.F. 20" Pin
 P.F. 21" Pin
 P.F. 22" Pin
 P.F. 23" Pin
 P.F. 24" Pin
 P.F. 25" Pin
 P.F. 26" Pin
 P.F. 27" Pin
 P.F. 28" Pin
 P.F. 29" Pin
 P.F. 30" Pin
 P.F. 31" Pin
 P.F. 32" Pin
 P.F. 33" Pin
 P.F. 34" Pin
 P.F. 35" Pin
 P.F. 36" Pin
 P.F. 37" Pin
 P.F. 38" Pin
 P.F. 39" Pin
 P.F. 40" Pin
 P.F. 41" Pin
 P.F. 42" Pin
 P.F. 43" Pin
 P.F. 44" Pin
 P.F. 45" Pin
 P.F. 46" Pin
 P.F. 47" Pin
 P.F. 48" Pin
 P.F. 49" Pin
 P.F. 50" Pin
 P.F. 51" Pin
 P.F. 52" Pin
 P.F. 53" Pin
 P.F. 54" Pin
 P.F. 55" Pin
 P.F. 56" Pin
 P.F. 57" Pin
 P.F. 58" Pin
 P.F. 59" Pin
 P.F. 60" Pin
 P.F. 61" Pin
 P.F. 62" Pin
 P.F. 63" Pin
 P.F. 64" Pin
 P.F. 65" Pin
 P.F. 66" Pin
 P.F. 67" Pin
 P.F. 68" Pin
 P.F. 69" Pin
 P.F. 70" Pin
 P.F. 71" Pin
 P.F. 72" Pin
 P.F. 73" Pin
 P.F. 74" Pin
 P.F. 75" Pin
 P.F. 76" Pin
 P.F. 77" Pin
 P.F. 78" Pin
 P.F. 79" Pin
 P.F. 80" Pin
 P.F. 81" Pin
 P.F. 82" Pin
 P.F. 83" Pin
 P.F. 84" Pin
 P.F. 85" Pin
 P.F. 86" Pin
 P.F. 87" Pin
 P.F. 88" Pin
 P.F. 89" Pin
 P.F. 90" Pin
 P.F. 91" Pin
 P.F. 92" Pin
 P.F. 93" Pin
 P.F. 94" Pin
 P.F. 95" Pin
 P.F. 96" Pin
 P.F. 97" Pin
 P.F. 98" Pin
 P.F. 99" Pin
 P.F. 100" Pin

Except as specifically noted on this plan, the survey was conducted in accordance with the following conditions: 1. The survey was conducted in accordance with the provisions of the Surveying Act, R.S.O. 1990, Chapter S. 1. 2. The survey was conducted in accordance with the provisions of the Surveying Regulations, R.R.O. 1990, Chapter S. 1. 3. The survey was conducted in accordance with the provisions of the Surveying Act, R.S.O. 1990, Chapter S. 1, and the Surveying Regulations, R.R.O. 1990, Chapter S. 1. 4. The survey was conducted in accordance with the provisions of the Surveying Act, R.S.O. 1990, Chapter S. 1, and the Surveying Regulations, R.R.O. 1990, Chapter S. 1. 5. The survey was conducted in accordance with the provisions of the Surveying Act, R.S.O. 1990, Chapter S. 1, and the Surveying Regulations, R.R.O. 1990, Chapter S. 1. 6. The survey was conducted in accordance with the provisions of the Surveying Act, R.S.O. 1990, Chapter S. 1, and the Surveying Regulations, R.R.O. 1990, Chapter S. 1. 7. The survey was conducted in accordance with the provisions of the Surveying Act, R.S.O. 1990, Chapter S. 1, and the Surveying Regulations, R.R.O. 1990, Chapter S. 1. 8. The survey was conducted in accordance with the provisions of the Surveying Act, R.S.O. 1990, Chapter S. 1, and the Surveying Regulations, R.R.O. 1990, Chapter S. 1. 9. The survey was conducted in accordance with the provisions of the Surveying Act, R.S.O. 1990, Chapter S. 1, and the Surveying Regulations, R.R.O. 1990, Chapter S. 1. 10. The survey was conducted in accordance with the provisions of the Surveying Act, R.S.O. 1990, Chapter S. 1, and the Surveying Regulations, R.R.O. 1990, Chapter S. 1.

This is a 1:1 Enlargement of the Original Survey Plan. The original survey plan was filed in the Office of the Registrar of Deeds, Toronto, Ontario, on July 7, 2004. The original survey plan was filed in the Office of the Registrar of Deeds, Toronto, Ontario, on July 7, 2004. The original survey plan was filed in the Office of the Registrar of Deeds, Toronto, Ontario, on July 7, 2004. The original survey plan was filed in the Office of the Registrar of Deeds, Toronto, Ontario, on July 7, 2004. The original survey plan was filed in the Office of the Registrar of Deeds, Toronto, Ontario, on July 7, 2004. The original survey plan was filed in the Office of the Registrar of Deeds, Toronto, Ontario, on July 7, 2004. The original survey plan was filed in the Office of the Registrar of Deeds, Toronto, Ontario, on July 7, 2004. The original survey plan was filed in the Office of the Registrar of Deeds, Toronto, Ontario, on July 7, 2004. The original survey plan was filed in the Office of the Registrar of Deeds, Toronto, Ontario, on July 7, 2004. The original survey plan was filed in the Office of the Registrar of Deeds, Toronto, Ontario, on July 7, 2004.

See also: Data - From County Type Maps.

COURSE	BEARING	DISTANCE
L1	N 84°11'30"E	42.23'
L2	N 84°11'30"E	52.50'
L3	N 80°58'17"E	48.28'
L4	S 16°04'14"E	42.23'
L5	S 42°03'37"E	13.41'
L6	S 25°13'28"E	62.42'
L7	S 24°12'07"E	81.16'
L8	S 21°15'31"E	63.24'
L9	S 21°15'31"E	63.24'
L10	S 21°15'31"E	63.24'
L11	S 21°15'31"E	63.24'
L12	S 21°15'31"E	63.24'
L13	S 21°15'31"E	63.24'
L14	S 21°15'31"E	63.24'
L15	S 21°15'31"E	63.24'
L16	S 21°15'31"E	63.24'
L17	S 21°15'31"E	63.24'
L18	S 21°15'31"E	63.24'
L19	S 21°15'31"E	63.24'
L20	S 21°15'31"E	63.24'
L21	S 21°15'31"E	63.24'
L22	S 21°15'31"E	63.24'
L23	S 21°15'31"E	63.24'
L24	S 21°15'31"E	63.24'
L25	S 21°15'31"E	63.24'
L26	S 21°15'31"E	63.24'
L27	S 21°15'31"E	63.24'
L28	S 21°15'31"E	63.24'



04-191

HENDERSON MCKENZIE ESTATE

HENDERSON MCKENZIE ESTATE PLUMBLEE SURVEYING
 OWNER SURVEYOR

NO. OF ACRES 27.36 MILES OF NEW ROAD 0.29%

NO. OF LOTS 8 DATE: JULY 7, 2004

ZONE: UNZONED

