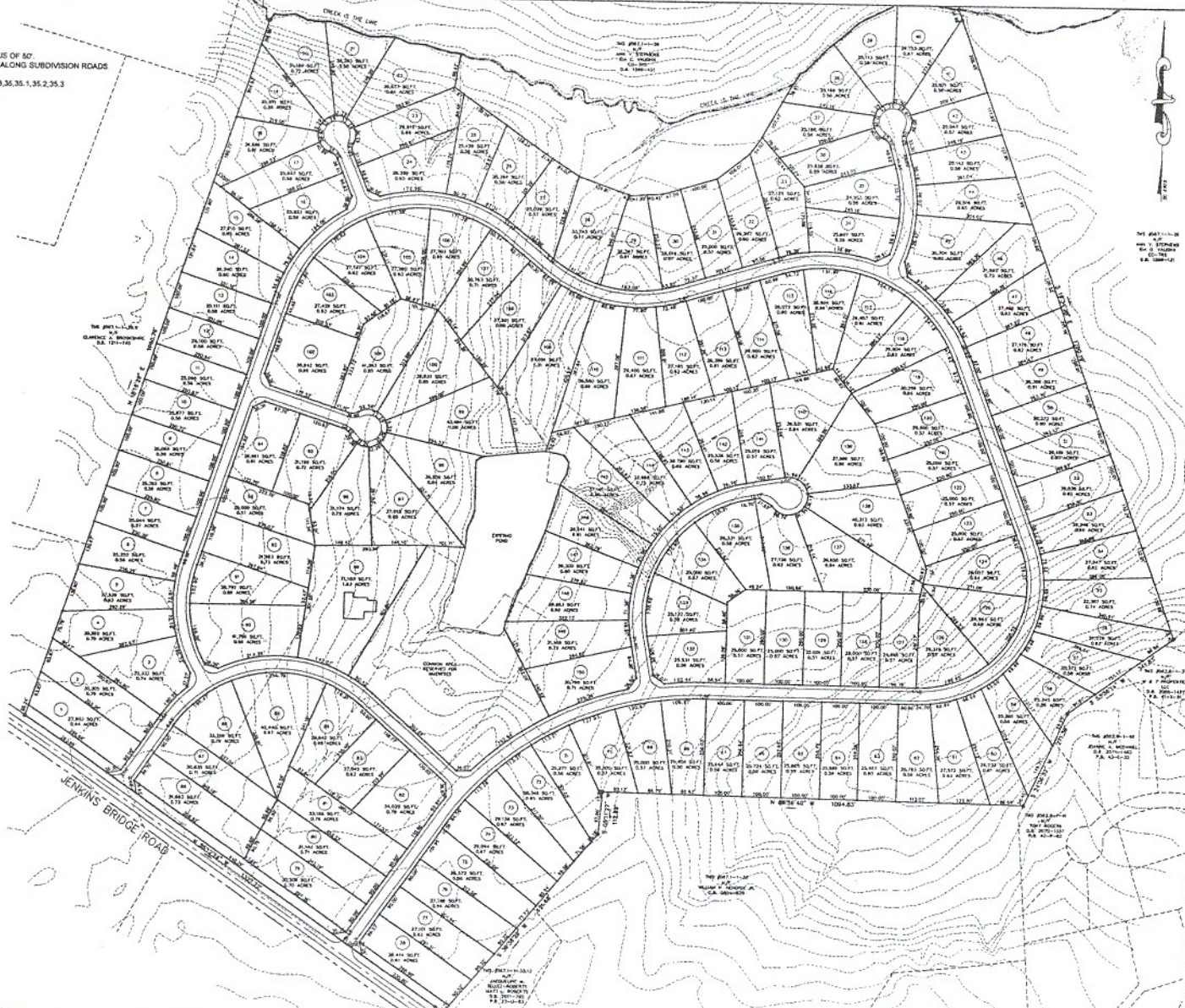


NOTES:

1. ROADS TO HAVE A 44' R/W.
2. CUL-DE-SACS TO HAVE A RADIUS OF 50'
3. MINIMUM SETBACK LINE OF 20' ALONG SUBDIVISION ROADS
4. ZONING: R-6
5. TAX MAP NUMBER: 507 1-1-30,33,35,35.1,35.2,35.3



LOCATION MAP

PRELIMINARY  
**04-150**  
SouthLake

40000 PHASE DEVELOPMENT, LLC      PINE HILL & ASSOCIATES, INC.  
 2 FARMVIEW COURT      JULIA L. STINEBAUGH  
 BREVARD COUNTY, FLORIDA      BREVARD COUNTY, FLORIDA  
 888-390-3150      888-390-3150      FAX 888-331-8201

DATE:      SURVEYOR:

NO. OF ACRES: 130.00      AREA OF NEW LOTS: 1.71  
 NO. OF LOTS: 160      DATE: 4/29/04

