

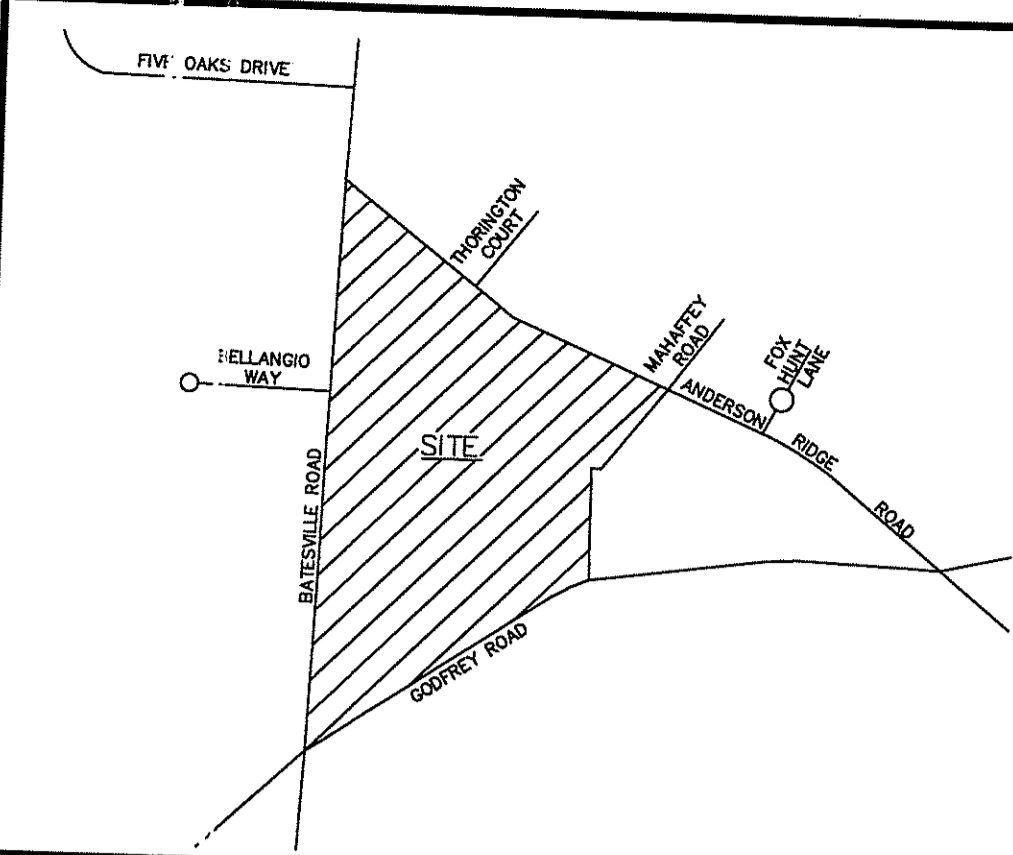
**NOTES**

1. No vehicular access to Batesville Road, Anderson Ridge Road or Godfrey Road from newly created lots. Interior access only.
2. Boundary and topographic survey by others.
3. All roads are private and shall be maintained by the homeowners association.
4. Tax Map No. 0531010100920 and 0531010101300
5. Sanitary Sewer to be 8".

**LEGEND**

Gross Acreage: 13.4 Ac.  
 Permitted Density: R-S, 6.55 Ac., 1.7 Lots per Ac.  
 R-20, 6.85 Ac., 2.2 Lots per Ac.-Cluster  
 Total Lots Allowed by Zoning: 26 Lots  
 Total Lots Shown: 26 Lots  
 Required Open Space: 4.0 Ac.  
 Open Space Provided: 6.0 Ac.

**Owner:**  
 Rosewood Communities  
 16 West McElhenny Road  
 Taylors, SC 29687  
 Ph: (864) 430-4365  
 Contact: Mark Nyblom



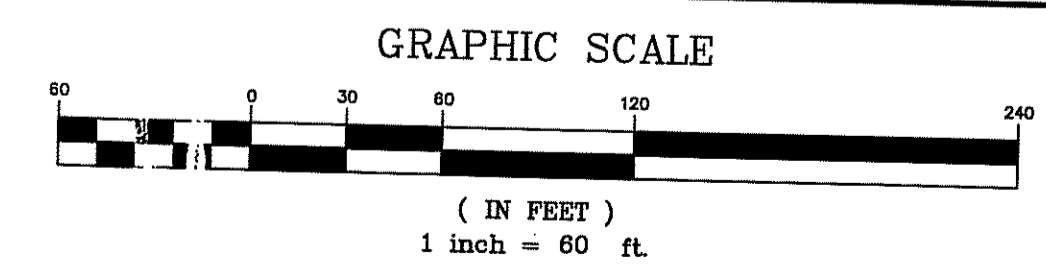
**VICINITY MAP**

2014-136

**PRELIMINARY PLAN  
WINDWOOD COTTAGES**

Rosewood Communities, Inc.      Reichert Consulting, LLC  
 Owner      Engineer

Total Acreage: 13.4 Ac.      Miles of New Road: 0.3 mi.  
 Number of Lots: 26 Lots      Date: 6-25-14



**REICHERT CONSULTING, LLC**  
Land Development Services

104 Litten Way  
 Greenville, SC 29615  
 reichertconsulting@gmail.com      Ph: 864-270-3397  
 Fax: 864-243-8354