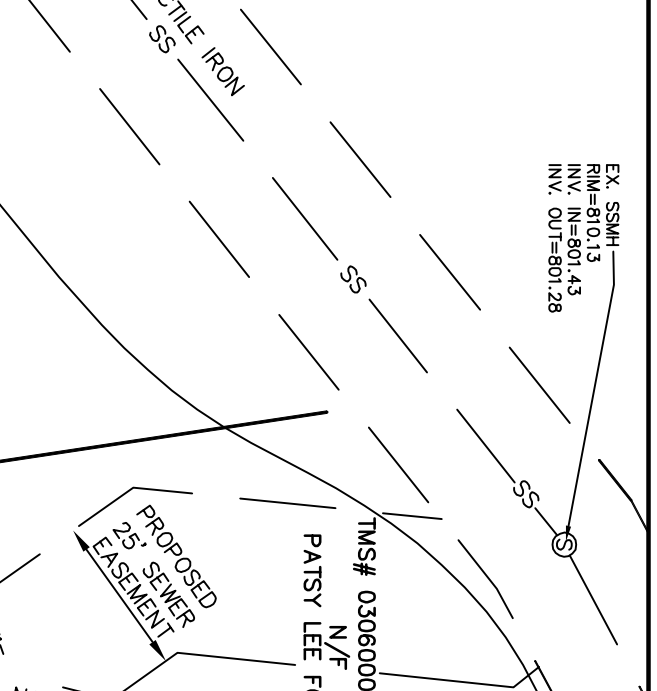
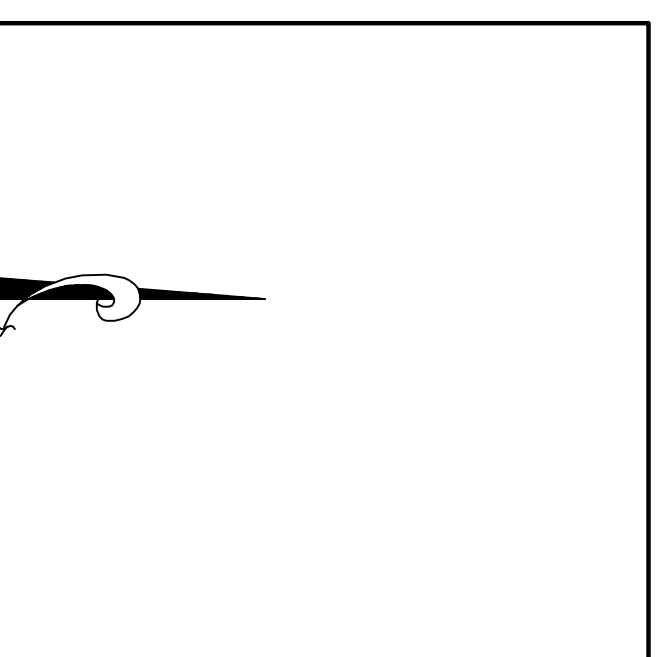
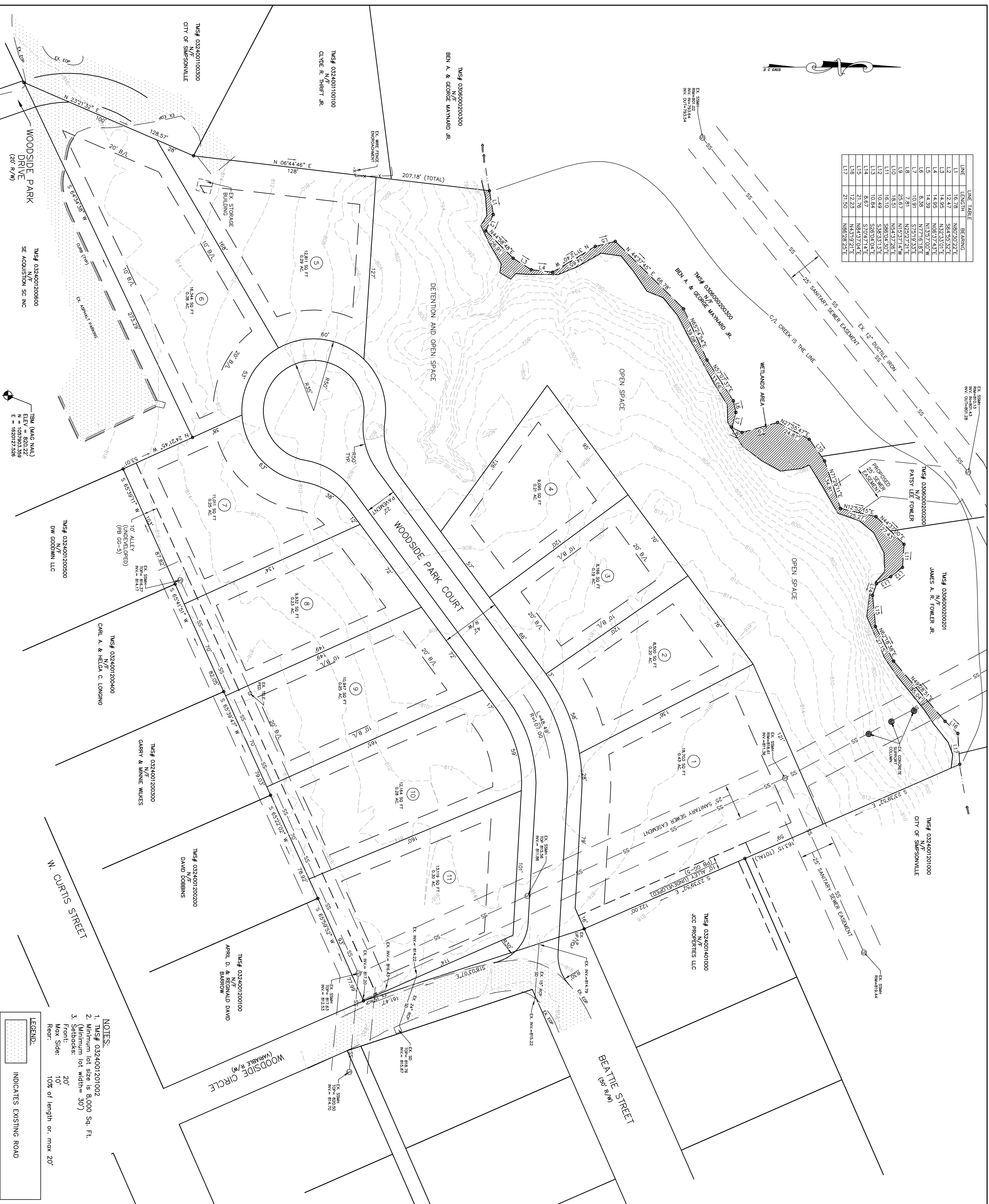
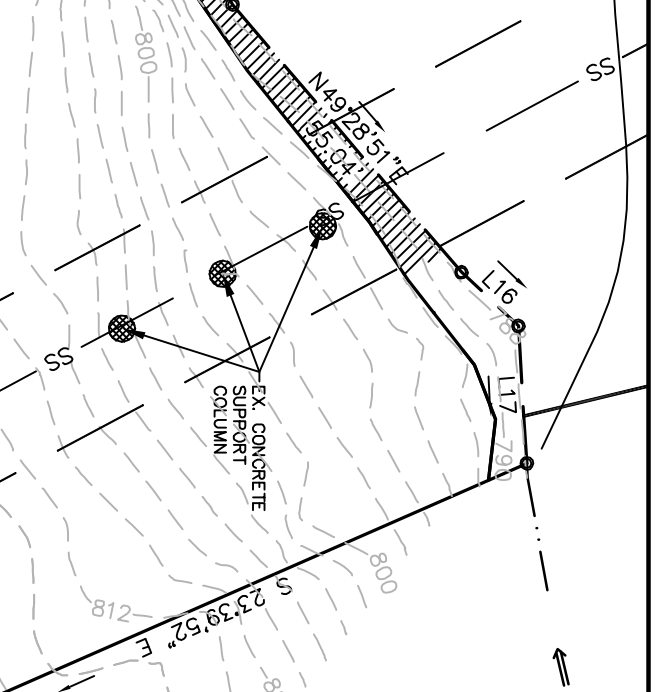


LINE	LENGTH	BEARING
L1	16.79	N80°20'22"E
L2	12.47	S84°59'39"E
L3	14.95	N32°33'01"E
L4	14.95	N05°37'43"E
L5	8.39	N15°57'00"W
L6	10.81	S75°19'33"E
L7	7.81	N25°27'21"E
L8	25.67	N15°37'14"W
L9	18.51	N43°37'26"E
L10	16.10	S85°04'30"E
L11	10.49	S83°33'13"E
L12	10.49	S70°24'14"E
L13	6.67	S70°24'14"E
L14	21.76	N43°37'04"E
L15	12.23	N43°37'21"E
L16	21.50	N88°28'25"E
L17		



NOTES:

1. TMS# 0324001201002
2. Minimum lot size is 8,000 Sq. Ft.
3. Setbacks:
 - Front: 20'
 - Max Side: 10'
 - Rear: 10% of length or max 20'



12056-PP-9-19-12.DWG

PRELIMINARY PLAN

WOODSIDE PARK

HABITAT FOR HUMANITY OF GREENVILLE COUNTY, INC. FANT, REICHERT, & FOGLEMAN, INC. ENGINEER

OWNER: FANT, REICHERT, & FOGLEMAN, INC.

No. ACRES: 5.08 MILES OF NEW ROAD: 0.08

No. LOTS: 11 DATE: 9-21-12

SCALE: 1" = 30'

REVISIONS:

No.	DATE	BY
1		
2		
3		
4		
5		
6		

FRF ENGINEERING & SURVEYING

FANT, REICHERT, & FOGLEMAN, INC. 26 WOOD LAKE ROAD, SUITE 705, GREENVILLE, SC 29607, PH: (864) 271-6633

DRAWN BY: BEN PRODUCT NO. 12056