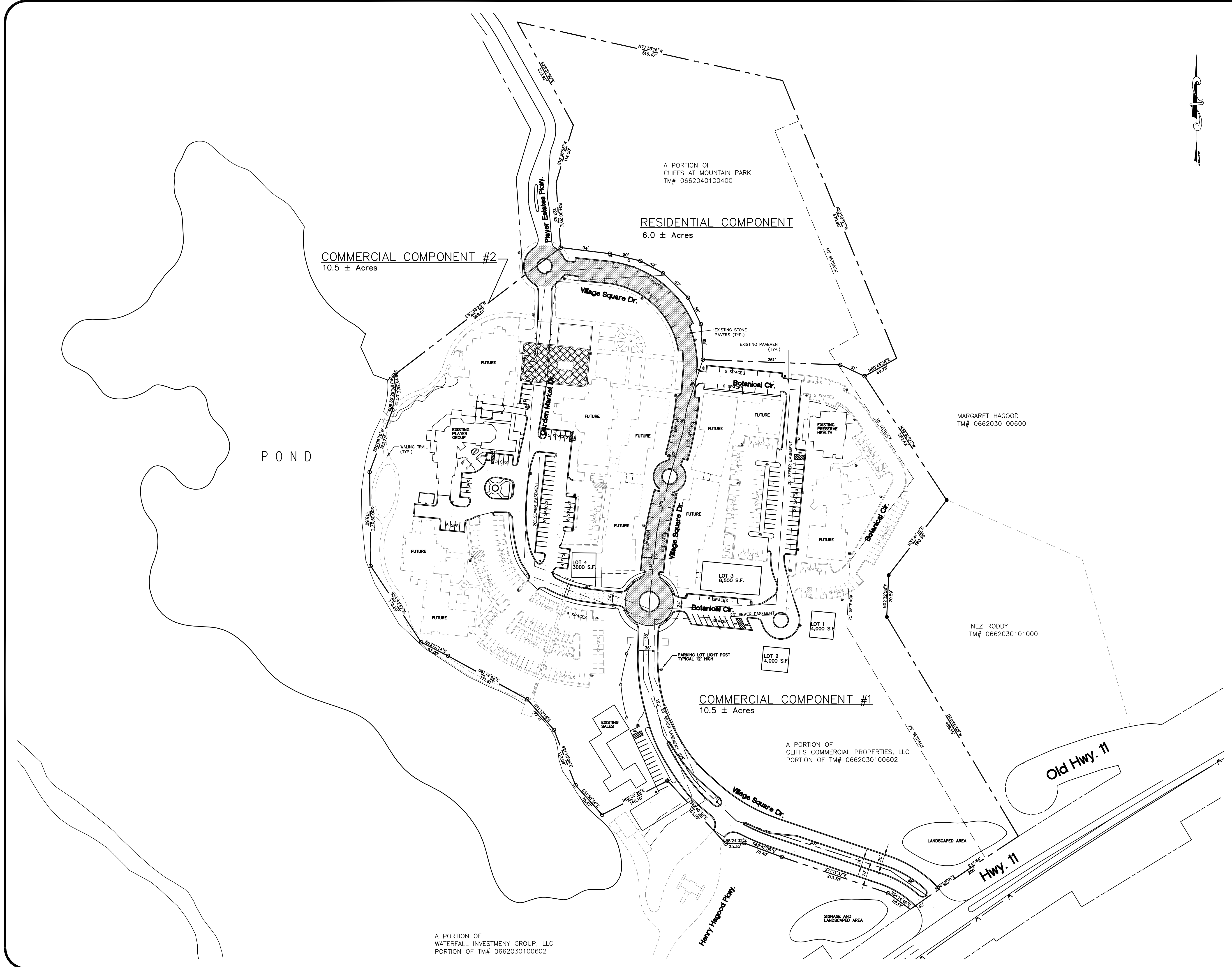


LOCATION MAP - NOT TO SCALE



A PORTION OF  
CLIFFS AT MOUNTAIN PARK  
TM# 0662040100400

**RESIDENTIAL COMPONENT**  
6.0 ± Acres

**COMMERCIAL COMPONENT #2**  
10.5 ± Acres

POND

MARGARET HAGOOD  
TM# 0662030100600

INEZ RODDY  
TM# 0662030101000

**COMMERCIAL COMPONENT #1**  
10.5 ± Acres

A PORTION OF  
CLIFFS COMMERCIAL PROPERTIES, LLC  
PORTION OF TM# 0662030100602

A PORTION OF  
WATERFALL INVESTMENT GROUP, LLC  
PORTION OF TM# 0662030100602

Note: These drawings are not surveyed drawings. They are for preliminary approval only.

**Preliminary**  
**GROUP DEVELOPMENT PLAN**

---

*Village at*  
**Mountain Park**

---

The Cliffs at Mountain Park, LLC  
3598 Highway 11  
Travelers Rest, S.C. 29690

---

DATE: AUGUST 6, 2008

1"=100'

Scale in feet