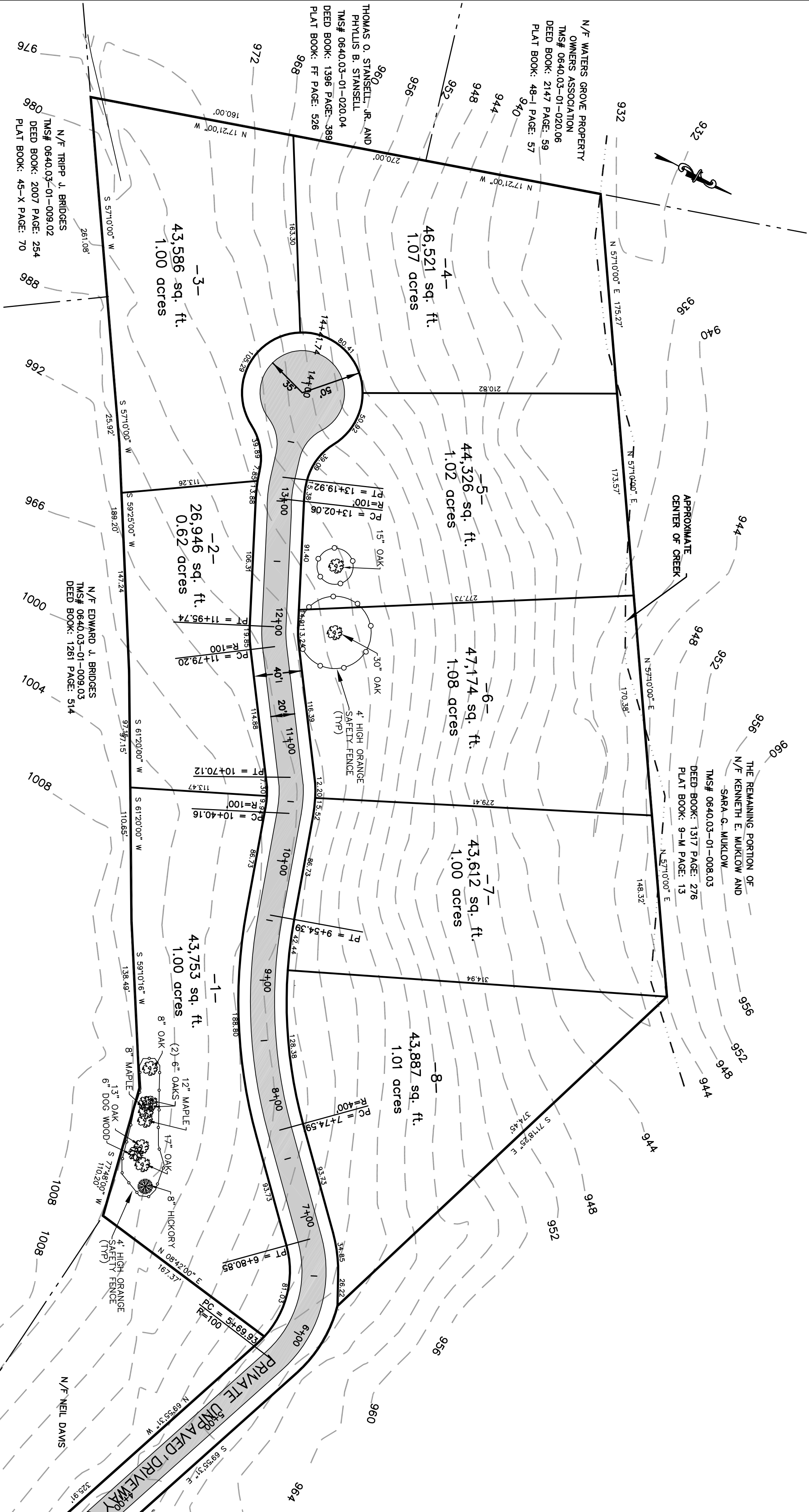


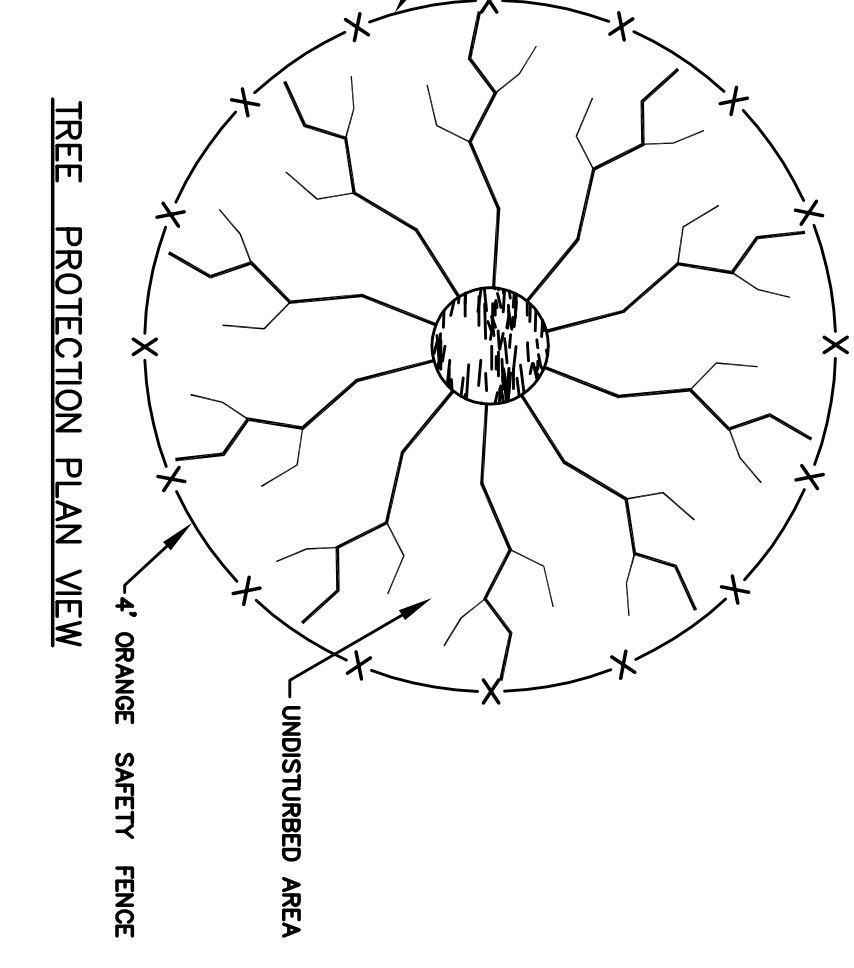
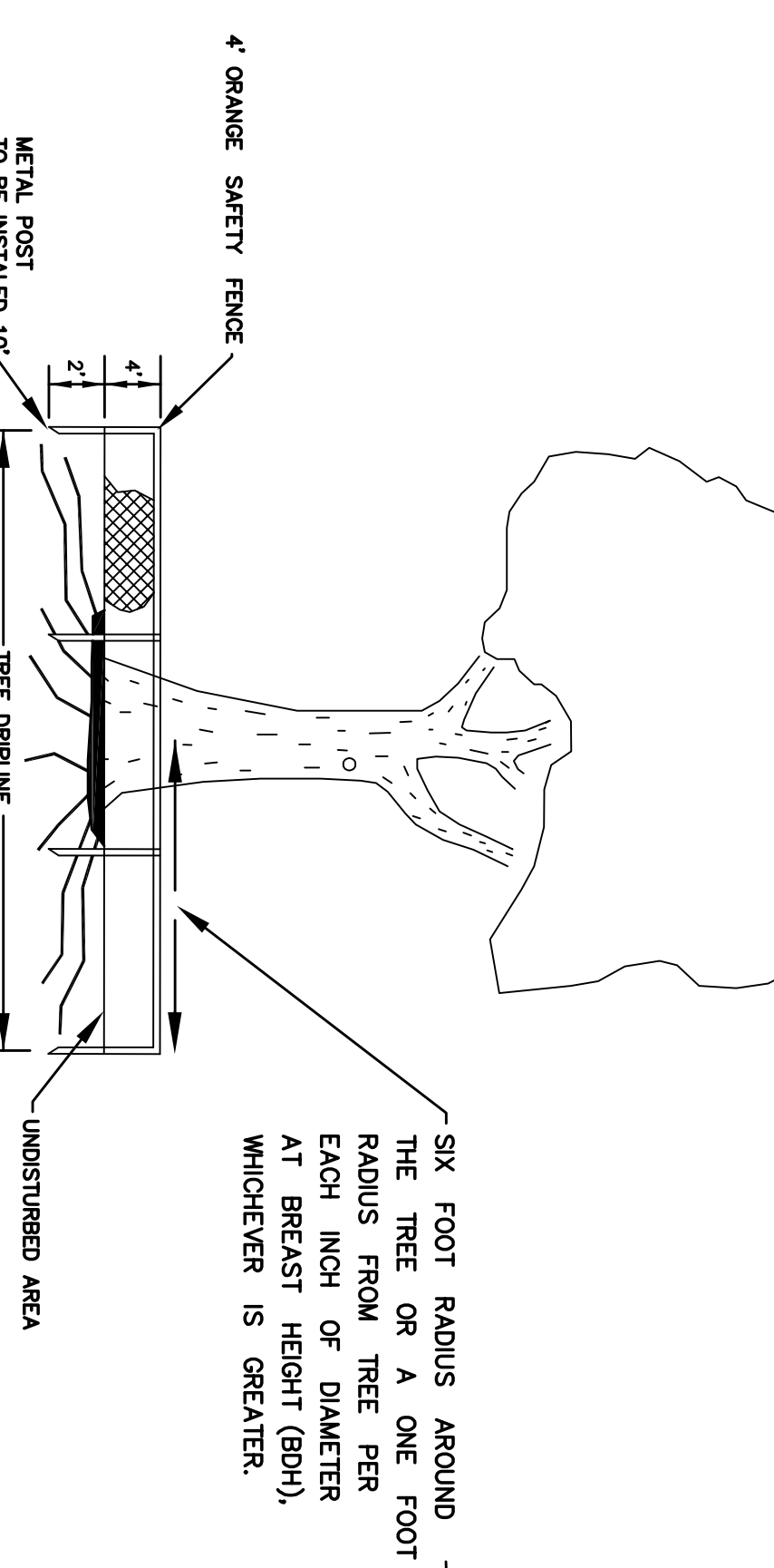
TREE CREDITS TABLE

NUMBER CREDITS REQUIRED: 10 CREDITS PER DISTURBED
ACRE
TOTAL DISTURBED ACRES: 3.5 ACRES
10 x 3.5 = 35 CREDITS REQUIRED

TREE PRESERVATION TABLE	TREE	CREDITS
	8" HICKORY	2.0
	6" DOG WOOD	1.8
	17" OAK	3.7
	12" MAPLE	3.2
	8" MAPLE	2.0
	8" OAK	2.0
	6" OAK	1.8
	6" OAK	1.8
	15" OAK	3.5
	30" OAK	14.7
TOTAL CREDITS		36.5



1. A ROOT PROTECTION ZONE WILL BE ESTABLISHED AROUND EACH TREE OR CLUSTER OF TREES TO BE PRESERVED AND ALONG THE STREAM BUFFERS TO MEET THE TREE PRESERVATION ORDINANCE. THE ROOT PROTECTION ZONE SHALL BE A CIRCULAR AREA DENIED BY THE RADIUS EXTENDING OUTWARD FROM THE TRUNK OF THE TREE A DISTANCE OF ONE (1) LINEAR FOOT FOR EACH DIAMETER INCH AND AT BREAKST HEIGHT (4.5') OF THE TREE. FOR EXAMPLE A TEN (10) INCH DIAMETER TREE SHALL HAVE A TEN (10) FOOT RADIUS ROOT PROTECTION ZONE.
2. THE PRE-CONSTRUCTION MEETING SHALL BE HELD WITH THE STATE DEPARTMENT OF ENVIRONMENT AND NATURAL RESOURCES (SDENR) AND THE COUNTY OF EAST CAROLINA DEPARTMENT OF ENVIRONMENT AND NATURAL RESOURCES (CDENR) AT LEAST 30 DAYS PRIOR TO THE DATE OF CONSTRUCTION. THE MEETING SHALL BE HELD AT THE SDENR OFFICE OR AT THE CDENR OFFICE. THE MEETING SHALL BE HELD AT THE SDENR OFFICE OR AT THE CDENR OFFICE. THE MEETING SHALL BE HELD AT THE SDENR OFFICE OR AT THE CDENR OFFICE.
3. NO CONSTRUCTION SHALL BE INSTALLED, MAINTAINED, AND REPAIRED BY THE CONTRACTOR DURING CONSTRUCTION.
4. THE TEMPORARY CONSTRUCTION FENCE SHALL BE INSTALLED AT THE DRIP LINE (OR TREE PROTECTION ZONE), TO PROTECT LOWER BRANCHES THE FENCE MUST BE OUTSIDE THE DRIP LINE.
5. THE FENCING SHALL BE SUBSTANTIAL ENOUGH TO PREVENT EQUIPMENT AND MACHINERY FROM ENTERING THE ROOT PROTECTION ZONE. THE FENCING SHALL BE INSTALLED WITH A 4\"/>



SOUTHERN HILLS PLANTATION

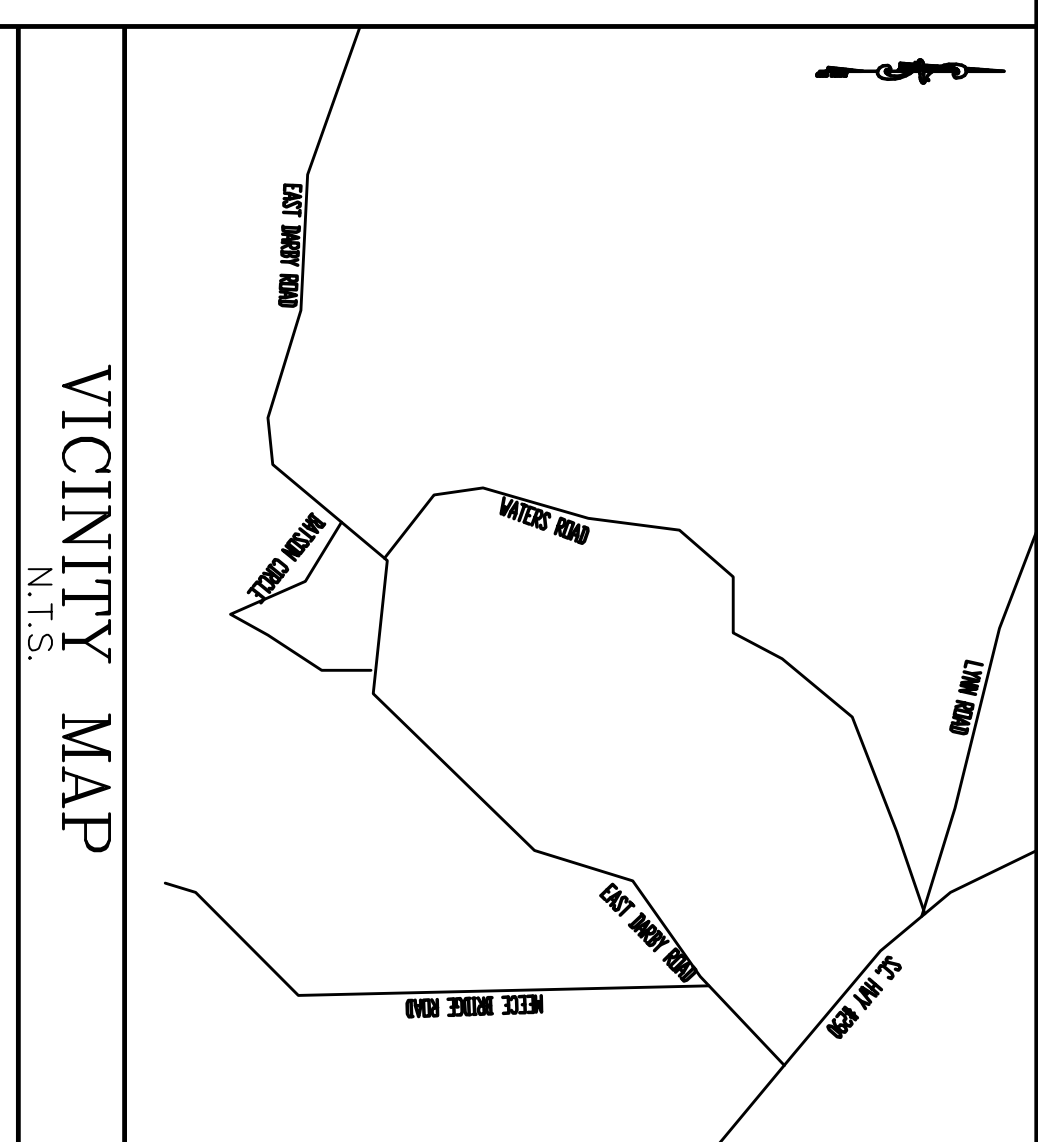
PRELIMINARY TREE PROTECTION PLAN

NEAL DAVIS
511 E. DARBY ROAD
TAYLORS SC 29687
(864) 320-0053

LAND DESIGN SERVICES, INC.
P.O. BOX 432
BASILEY, SC 29641
PHONE: (864) 220-7061
ENGINEER

NO. ACRES: 7.72
MILES OF COUNTY ROAD: 0.00
NO. LOTS: 8
DATE: 8-5-08

1"=60'



NO.	DATE	REVISIONS	BY

Land Design Services, Inc.
Civil Engineering, Land Planning & Consulting
P.O. Box 432 Eastley, S.C. 29641 (864) 220-7051
DRAWN BY: KR PROJECT NO. L-08-060