

LOCATION MAP (N.T.S.)


**GRAY ENGINEERING CONSULTANTS, INC.**  
 1000 W. GREENVILLE AVENUE  
 GREENVILLE, SOUTH CAROLINA 29615  
 PHONE: 864-686-1111  
 FAX: 864-686-1112  
 WWW: WWW.GRAYENGINEERING.COM



07-195

**NORTH TRAILS END SUBDIVISION**

TYPE OF DEVELOPMENT **RESIDENTIAL**

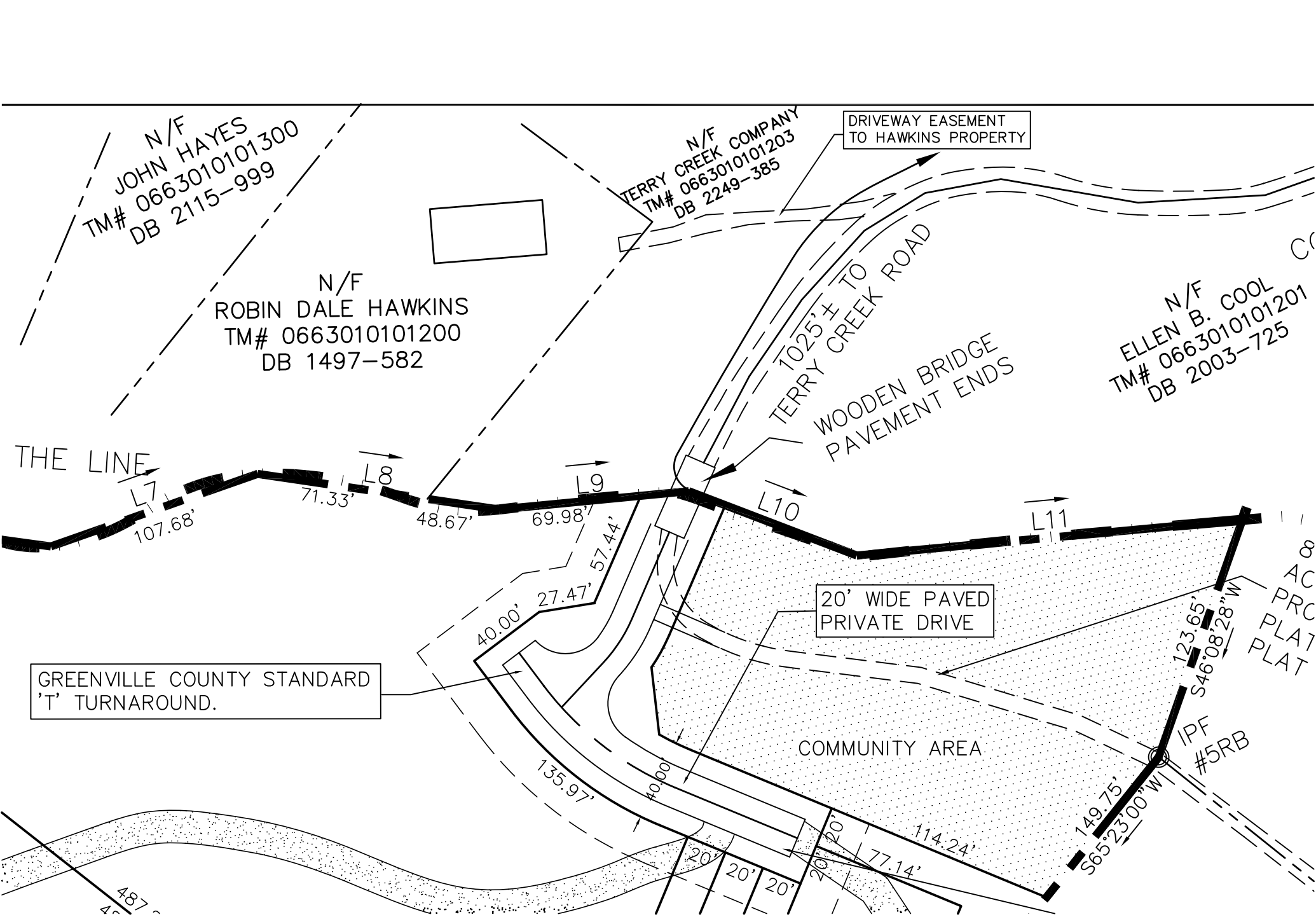


- GREENVILLE COUNTY GENERAL NOTES**
1. ALL NEW LOTS TO HAVE INTERNAL ACCESS ONLY. ALL PRIVATE DRIVES WILL HAVE A 40' R/W.
  2. THERE IS A 5' DRAINAGE AND UTILITY EASEMENT ALONG EACH SIDE OF ALL INTERIOR LOT LINES AND A 10' DRAINAGE AND UTILITY EASEMENT ALONG ALL EXTERIOR LOT LINES, EXCEPT WHERE NOTED.
  3. A STORMWATER MANAGEMENT PLAN AND SEDIMENT REDUCTION PLAN HAS BEEN PREPARED FOR THIS PROPERTY AND WILL BE APPLIED FOR LAND DISTURBING ACTIVITIES. EACH PROPERTY OWNER WILL COMPLY WITH THIS PLAN UNLESS AN INDIVIDUAL PLAN IS PREPARED AND APPROVED FOR THAT PROPERTY.
  4. GREENVILLE COUNTY IS NOT RESPONSIBLE FOR THE MAINTENANCE OF ANY REQUIRED DETENTION AREA.

**NOTE: ALL LOTS HAVE A MINIMUM OF 20' FRONTAGE ON THE NEW PRIVATE DRIVE, PER GREENVILLE COUNTY ORDINANCE.**

PROJECT PLAN  
**NORTH TRAILS END SUBDIVISION**  
 NORTH TRAILS END  
 GREENVILLE COUNTY, SC

DATE: 07-19-15  
 DRAWN BY: J. W. WILSON  
 CHECKED BY: J. W. WILSON  
 SCALE: AS SHOWN  
 SHEET NO. 1 OF 1  
**CV-1**



N/F  
JOHN HAYES  
TM# 0663010101300  
DB 2115-999

N/F  
ROBIN DALE HAWKINS  
TM# 0663010101200  
DB 1497-582

N/F  
TERRY CREEK COMPANY  
TM# 0663010101203  
DB 2249-385

N/F  
ELLEN B. COOL  
TM# 0663010101201  
DB 2003-725

DRIVEWAY EASEMENT  
TO HAWKINS PROPERTY

20' WIDE PAVED  
PRIVATE DRIVE

GREENVILLE COUNTY STANDARD  
'T' TURNAROUND.

COMMUNITY AREA

8  
AC  
PRC  
PLAT

IPF  
#5RB

THE LINE

L7 107.68'  
L8 71.33'  
L9 48.67'  
L10 69.98'  
L11 57.44'

1025'± TO  
TERRY CREEK ROAD

WOODEN BRIDGE  
PAVEMENT ENDS

487'

40.00'  
27.47'

135.97'

20'  
20'  
20'  
20'  
20'

114.24'

77.14'

149.75'  
S65°23'00" W

123.65'  
S46°08'28" W