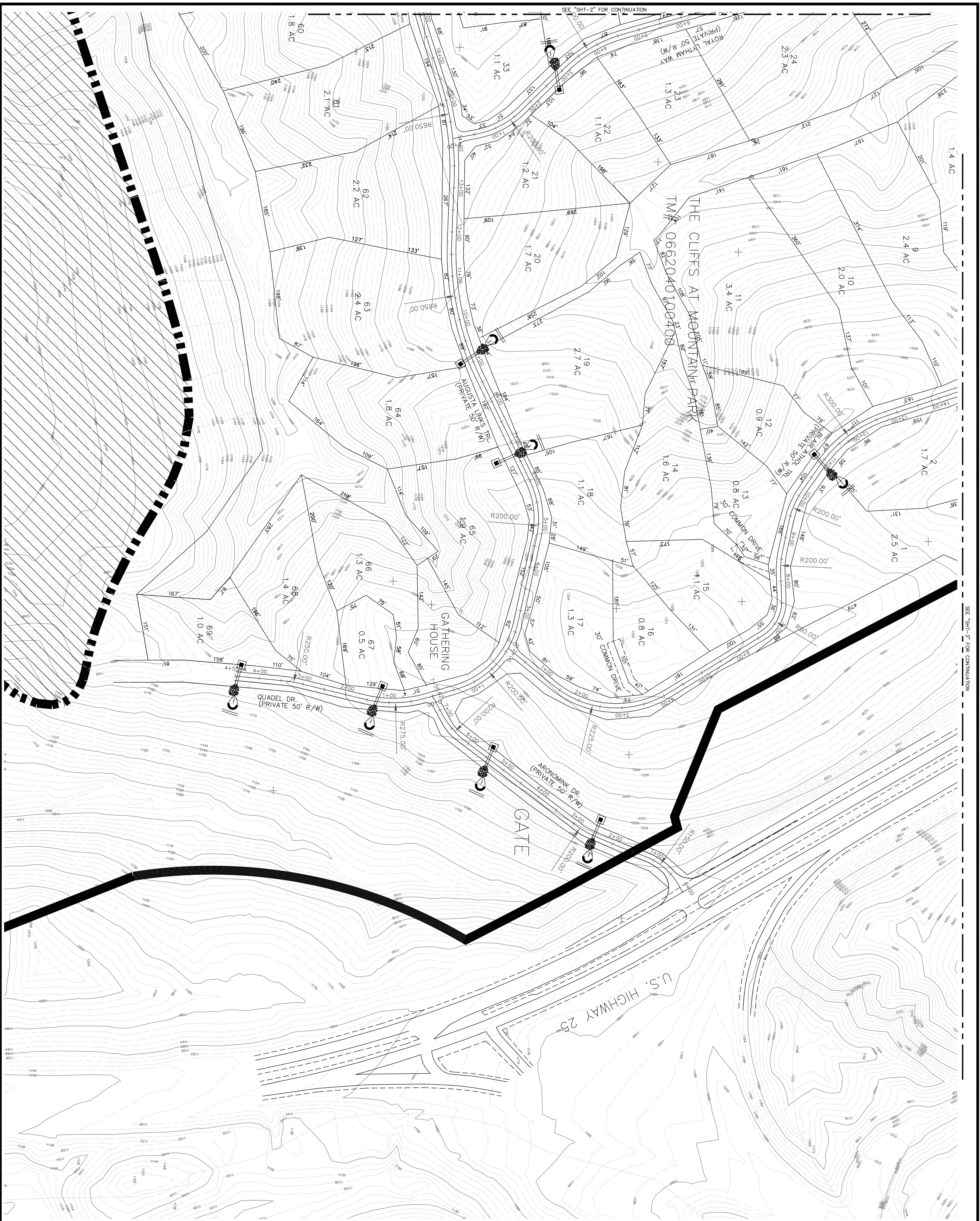


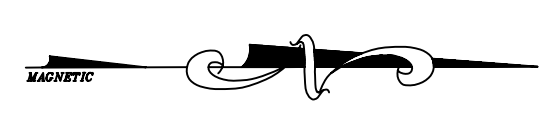
3598 Highway 11
 Travelers Rest, SC 29690
 PHONE: (864) 836-1120

CLIFFS ESTATES PRELIMINARY MASTER PLAN



SEE SHEET 2 FOR CONTINUATION

SEE SHEET 1 FOR CONTINUATION

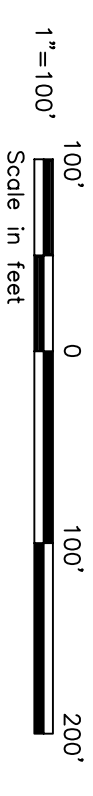


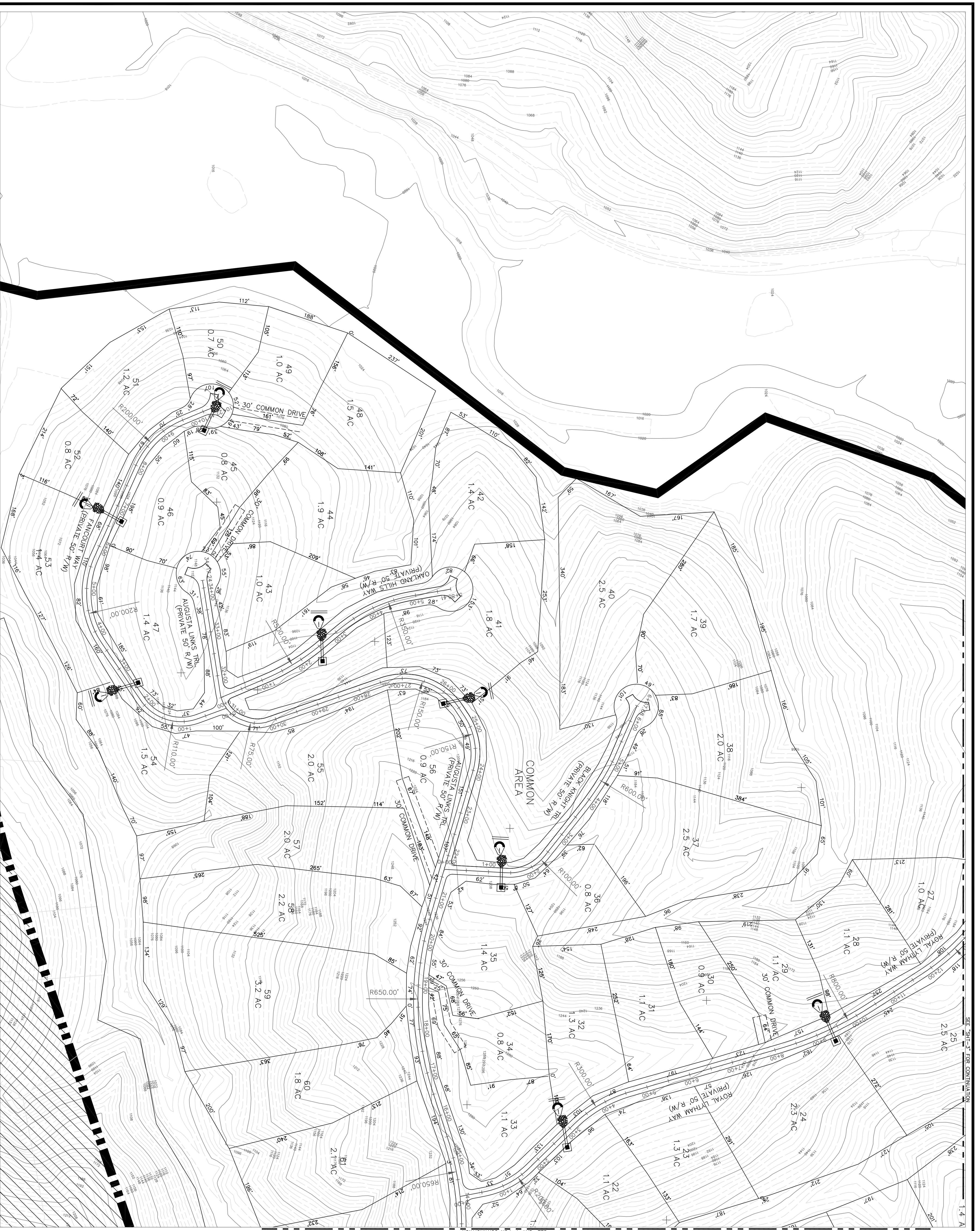
Note: This plan is a revision of Cliffs Estate Phase I, dated January 30, 2007.

PRELIMINARY PLAT
(SHEET 1 OF 3)
CLIFFS ESTATES
PHASE 1
TRACTS 1 THRU 69

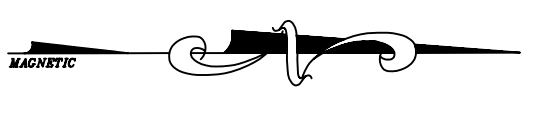
James B. Anthony, Pres.
The Cliffs
3598 Highway 11
Travelers Rest, S.C. 29690
OWNER(S)
LINDSEY & ASSOCIATES, INC.
SURVEYOR(S)

NO. OF ACRES	300 Total	MILES OF NEW ROAD 2 (Phase 1)
NO. OF LOTS	140 (Phase 1)	
ZONED	UNTOWNED	DATE: January 30, 2007 (Revised May 2, 2007)





SEE "SH-1" FOR CONTINUATION



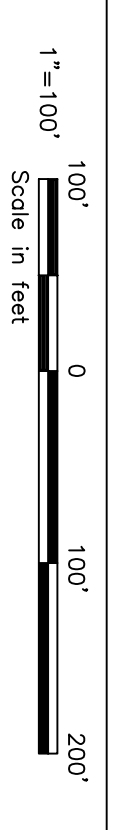
Note: This plan is a revision of Cliffs Estate Phase 1, dated January 30, 2007.

**PRELIMINARY PLAT
(SHEET 2 OF 3)
CLIFFS ESTATES
PHASE 1
TRACTS 1 THRU 69**

James B. Anthony, Pres.
The Cliffs
3368 Hills Hwy 11
Travelers Rest, S.C. 29690
OWNERS(S)

LINDESEY & ASSOCIATES, INC.
SURETORS(S)

NO. OF ACRES 300 Total
140 (Phase 1)
NO. OF LOTS 69 (Phase 1)
ZONED UNZONED
DATE: January 30, 2007
(Revised May 2, 2007)





Note: This plan is a revision of Cliffs Estate Phase 1, dated January 30, 2007.

PRELIMINARY PLAT
(SHEET 3 OF 3)
CLIFFS ESTATES
PHASE 1
TRACTS 1 THRU 69

James B. Anthony, Pres.
 The Cliffs
 3598 Highway 11
 Trowers Res., S.C. 29690
 OWNERS(S)

LINDSEY & ASSOCIATES, INC.
 SURVEYOR(S)

NO. OF ACRES 300 Total MILES OF NEW ROAD 2 (Phase 1)
140 (Phase 1)

NO. OF LOTS 69 (Phase 1)

ZONED UNZONED DATE: January 30, 2007
 (Revised May 2, 2007)

