

N/F HOLLINGSWORTH FUNDS INC.
T.M.S. 604.6-1-25
D.B. 1938-705

T.M.S. 604.6-1-28
D.B. 1882-972
N/F MCKINNEY

APPROXIMATE LOCATION
100 YEAR FLOOD PLAIN
SCALED FROM FIRM
45045C0475D

N/F CALDWELL
T.M.S. 604.6-1-9
P.B. 4-D/109

N/F CALDWELL
T.M.S. 604.6-1-15.3
P.B. 32-U/98

N/F WHITE
D.B. 1970-1856
T.M.S. 604.6-1-10

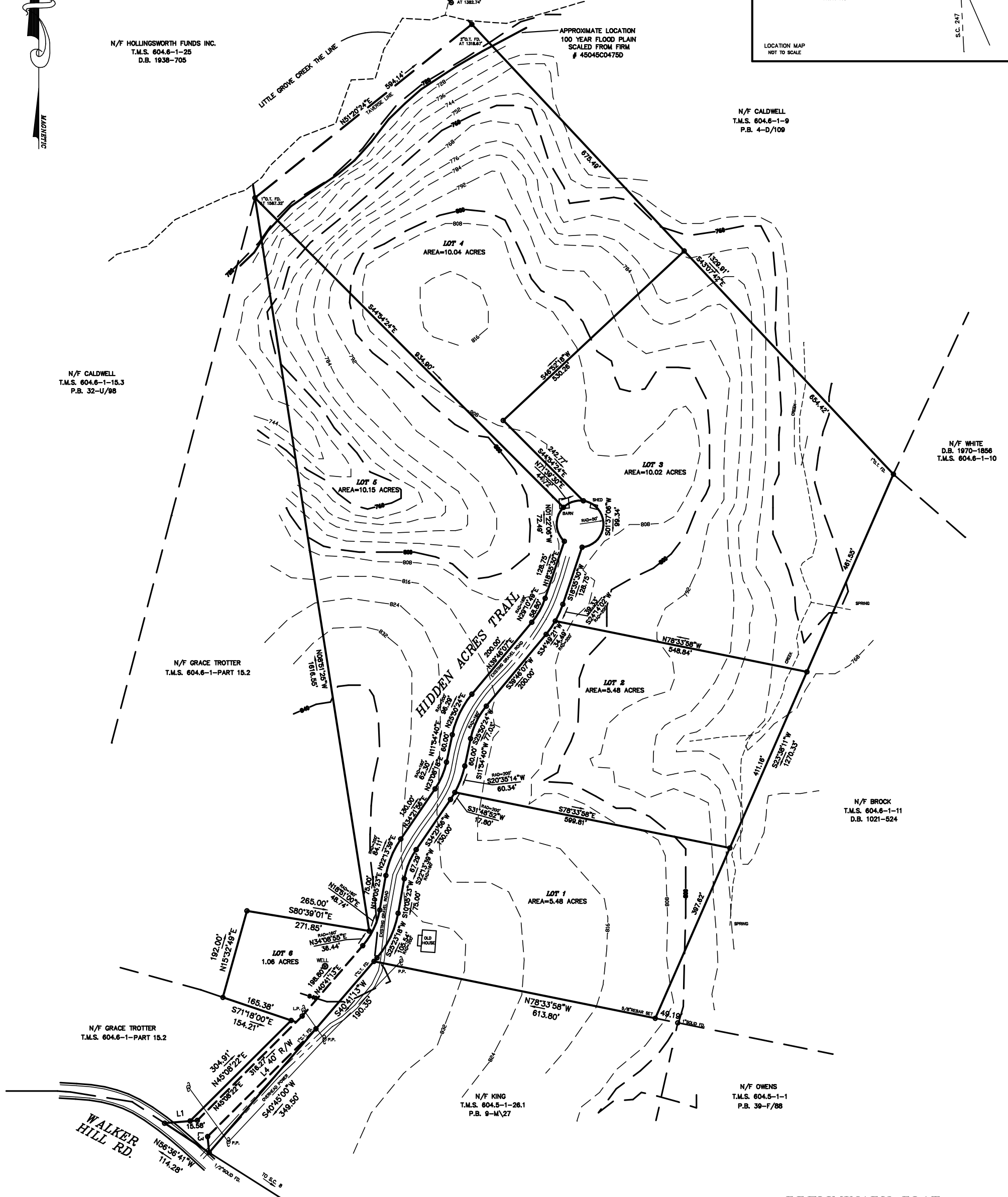
N/F GRACE TROTTER
T.M.S. 604.6-1-PART 15.2

N/F BROCK
T.M.S. 604.6-1-11
D.B. 1021-524

N/F GRACE TROTTER
T.M.S. 604.6-1-PART 15.2

N/F KING
T.M.S. 604.5-1-26.1
P.B. 9-M/27

N/F OWENS
T.M.S. 604.5-1-1
P.B. 39-F/88



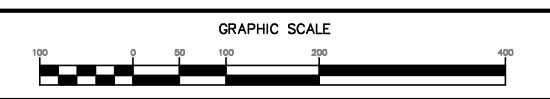
PRELIMINARY PLAT

HIDDEN ACRES

RCF Development Group LLC
115 Boggs Road
Pelzer, South Carolina 29869
(828) 337-8323
OWNER

EAS PROFESSIONALS, INC.
153 BROZZINI COURT SUITE C
GREENVILLE, S.C. 29615
(864) 234-7368
SURVEYOR

NO. OF ACRES: 44.03 MILES OF NEW ROAD: 0.3
NO. LOTS: 6 DATE: DECEMBER 26, 2006
ZONED: UNZONED



EAS PROFESSIONALS, INC.
Civil & Geotechnical Engineering • Land Surveying • Materials Testing

153 Brozzini Court, Suite C
Greenville, South Carolina 29615
Phone (864) 234-7368 • Fax (864) 234-7369

L1	N88°03'50"E	54.74'
L2	N48°08'22"E	22.92'
L3	S08°38'00"E	34.53'
L4	N48°08'22"E	328.64'

AREA=44.03 ACRES
T.M.S. 604.6-1-13, 15 & 15.2

