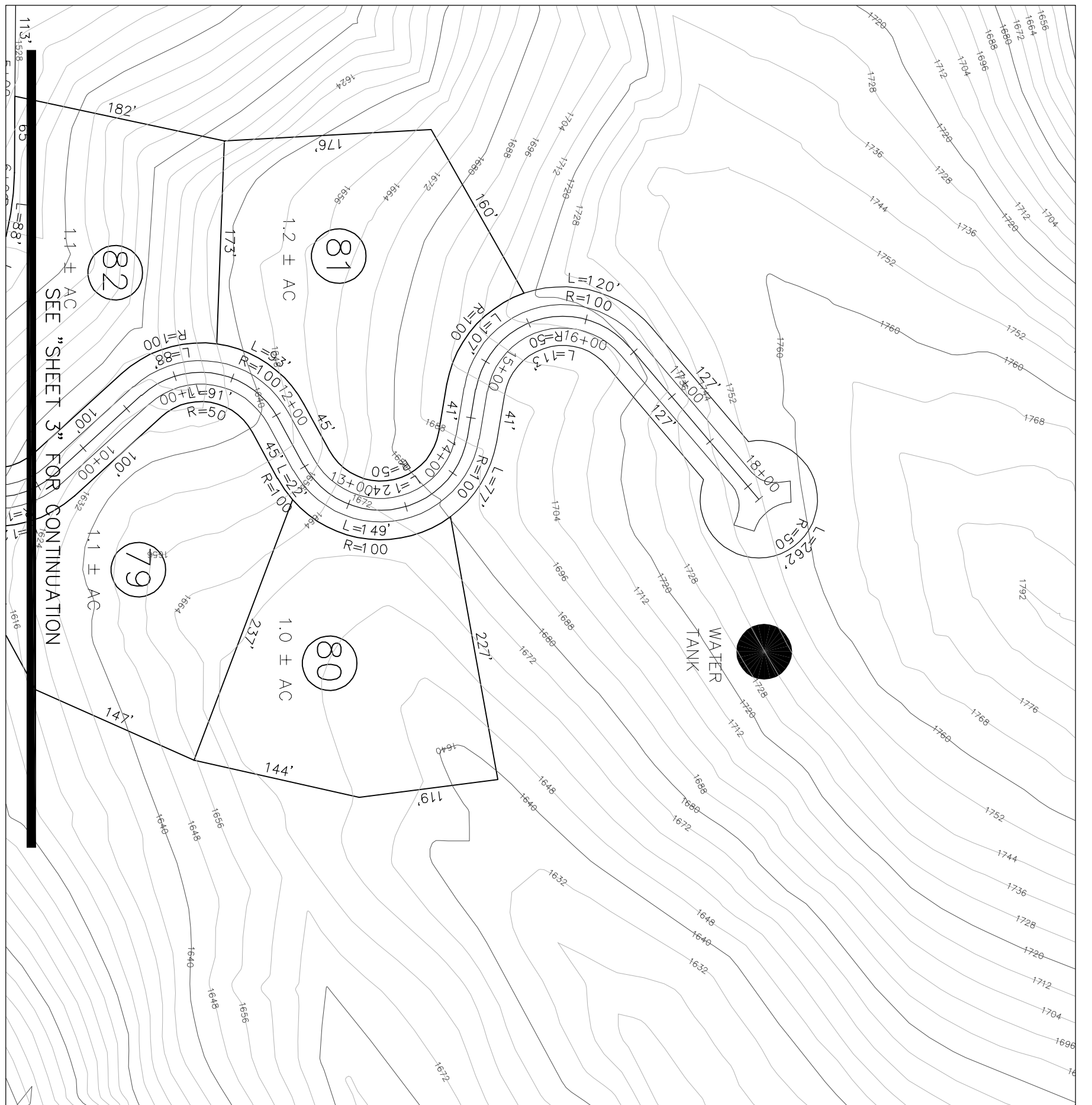




1.6 SECTION SHEET FOR CONTINUATION



SEE SHEET 3 FOR CONTINUATION



<p>PRELIMINARY PLAT (SHEET 6 OF 8)</p> <p>CLIFFS VALLEY WEST</p> <p>PHASE 1</p> <p>TRACTS 1 THRU 212</p>	
James B. Anthony, Pres. The Cliffs at Glassy, Inc. 301 Beaver Dam Rd. Travelers Rest, S.C. 29690	LINDSEY & ASSOCIATES, INC. SURVEYOR(S)
NO. OF ACRES 338	MILES OF NEW ROAD 5.6
NO. OF LOTS 212	
ZONED UNZONED	DATE: September 7, 2005
<p>1" = 100' Scale in feet</p>	