

SYMBOL	DESCRIPTION
(C)	COMMERCIAL CORNER
(S)	STREET
(A)	ALLEY
(W)	WATER
(E)	ELECTRIC
(G)	GAZ
(T)	TRENCH
(D)	DRAINAGE
(L)	LANDSCAPE
(F)	FENCE
(M)	MOUND
(H)	HIGHWAY
(R)	RAILROAD
(P)	PUMP
(V)	VALVE
(M)	METER
(S)	STOP SIGN
(C)	CORNER
(A)	ALLEY
(S)	STREET
(W)	WATER
(E)	ELECTRIC
(G)	GAZ
(T)	TRENCH
(D)	DRAINAGE
(L)	LANDSCAPE
(F)	FENCE
(M)	MOUND
(H)	HIGHWAY
(R)	RAILROAD
(P)	PUMP
(V)	VALVE
(M)	METER
(S)	STOP SIGN

SYMBOL	DESCRIPTION
(C)	COMMERCIAL CORNER
(S)	STREET
(A)	ALLEY
(W)	WATER
(E)	ELECTRIC
(G)	GAZ
(T)	TRENCH
(D)	DRAINAGE
(L)	LANDSCAPE
(F)	FENCE
(M)	MOUND
(H)	HIGHWAY
(R)	RAILROAD
(P)	PUMP
(V)	VALVE
(M)	METER
(S)	STOP SIGN

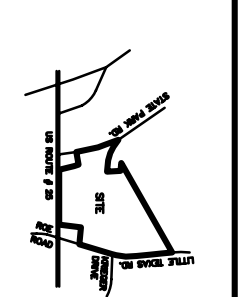
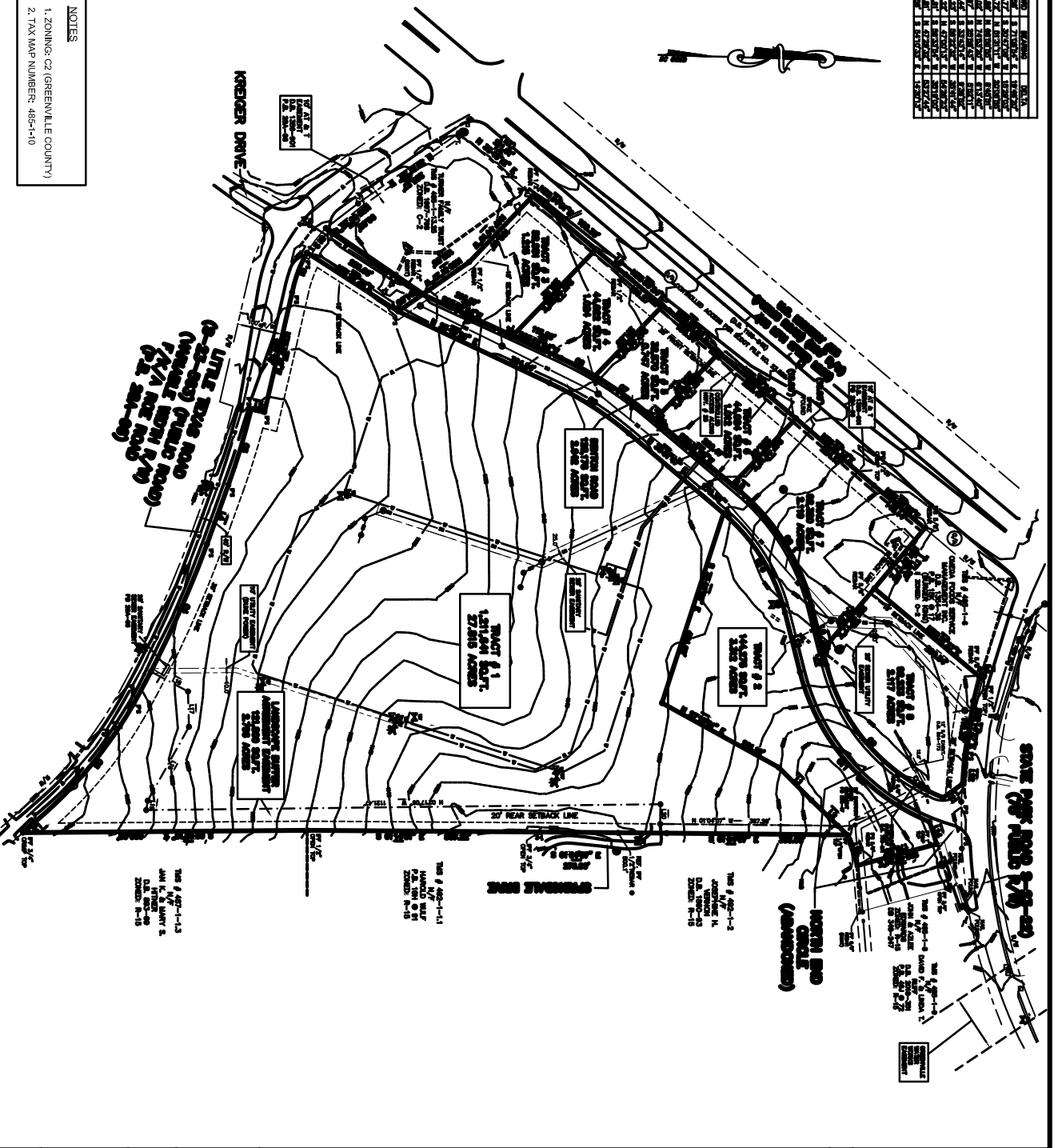
SYMBOL	DESCRIPTION
(C)	COMMERCIAL CORNER
(S)	STREET
(A)	ALLEY
(W)	WATER
(E)	ELECTRIC
(G)	GAZ
(T)	TRENCH
(D)	DRAINAGE
(L)	LANDSCAPE
(F)	FENCE
(M)	MOUND
(H)	HIGHWAY
(R)	RAILROAD
(P)	PUMP
(V)	VALVE
(M)	METER
(S)	STOP SIGN

• ANYTHING WITHIN ANY AND PART OF THE CORNER OF ANY OTHER NEIGH-OR-WAY

ZONING INFORMATION
 ZONE C-2 (COMMERCIAL DISTRICT)
 GENERAL USES:
 ALL TYPES OF RETAIL AND SERVICE BUILDINGS, INCLUDING RESTAURANTS, BUT NOT INCLUDING HOTELS OR RESORTS.
 OFFICES AND PROFESSIONAL BUILDINGS.
 LIMITED MULTIFAMILY RESIDENCES.
 ALL TYPES OF BUS, TRUCK AND TRAILER STATIONS.
 ALL TYPES OF FUEL TANKS.
 ALL TYPES OF PUBLIC UTILITY PLANTS AND EQUIPMENT.

FLOOD INFORMATION
 THE CITY OF TOWNERS BEST IS NOT UNDER FEMA JURISDICTIONAL CONTROL.

NOTES
 1. ZONING: C2 (GREENVILLE COUNTY)
 2. TAX MAP NUMBER: 485-4-10



PRELIMINARY	
SUBDIVISION PLAN FOR WAL-MART STORE # 5487	
NO. OF LOTS	8
NO. OF ACRES	42.076
DATE	4-4-05
ZONE	C2 - COMMERCIAL DISTRICT
PREPARED BY	JOHN A. GORDON, INC.
DATE	02-27-05
PROJECT NO.	02-05-001

1 inch = 100 ft. (AS SHOWN)