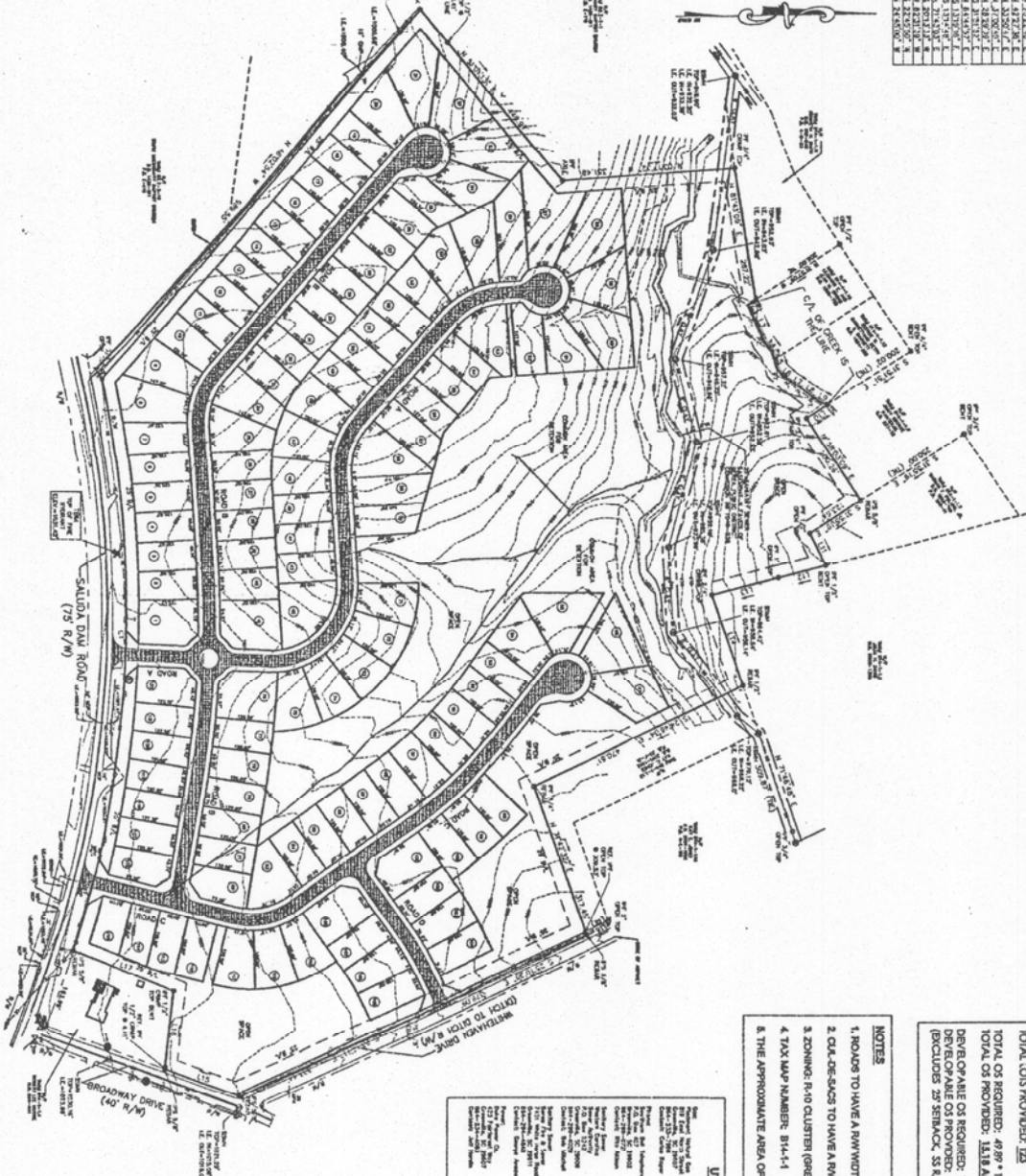


LINE TABLE

LINE NO.	DESCRIPTION	LENGTH
1	1/8" OR	5.3125' E
2	1/8" OR	5.3125' E
3	1/8" OR	5.3125' E
4	1/8" OR	5.3125' E
5	1/8" OR	5.3125' E
6	1/8" OR	5.3125' E
7	1/8" OR	5.3125' E
8	1/8" OR	5.3125' E
9	1/8" OR	5.3125' E
10	1/8" OR	5.3125' E
11	1/8" OR	5.3125' E
12	1/8" OR	5.3125' E
13	1/8" OR	5.3125' E
14	1/8" OR	5.3125' E
15	1/8" OR	5.3125' E
16	1/8" OR	5.3125' E
17	1/8" OR	5.3125' E
18	1/8" OR	5.3125' E
19	1/8" OR	5.3125' E
20	1/8" OR	5.3125' E

DATE: 10/19/03  
DRAWN BY: [Name]  
CHECKED BY: [Name]  
SCALE: AS SHOWN



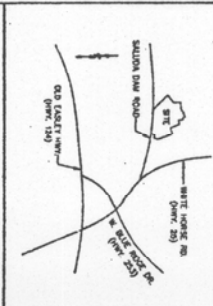
OPEN SPACE DATA FOR R10 CLUSTER  
 MAXIMUM ALLOWABLE LOTS: 4937 \* 44 = 219  
 TOTAL LOTS PROVIDED: 122  
 TOTAL CS REQUIRED: 4937 \* 15% = 740 AC  
 TOTAL CS PROVIDED: 1618 AC  
 DEVELOPABLE CS REQUIRED: 7.49 \* 50% = 3.74 AC  
 DEVELOPABLE CS PROVIDED: 10.90 AC  
 (EXCLUDING 25' STRIP, 55 R/W, CREEKS, ETC.)

- NOTES
1. LOTS TO HAVE A MIN WIDTH OF 40'
  2. OLD LOTS TO HAVE A MIN RADIUS OF 50'
  3. ZONING: R-10 CLUSTER (GREENVILLE COUNTY)
  4. TAX MAP NUMBER: B14-41
  5. THE APPROXIMATE AREA OF EACH LOT IS 7200 SF.

**UTILITIES**

The proposed utility lines are shown on this plan. The utility lines are shown as follows:

- Water Main
- Sanitary Sewer
- Storm Sewer
- Electric
- Gas
- Telephone



**PRELIMINARY**  
**OS-103**  
**HERITAGE FALLS**

PREPARED BY: [Name]  
 DATE: 10/19/03

NO. OF LOTS: 122  
 AREA OF NEW ROAD: 0.81  
 DATE: 1-2-06

SCALE: 1" = 100' (SEE SHEET 1)