

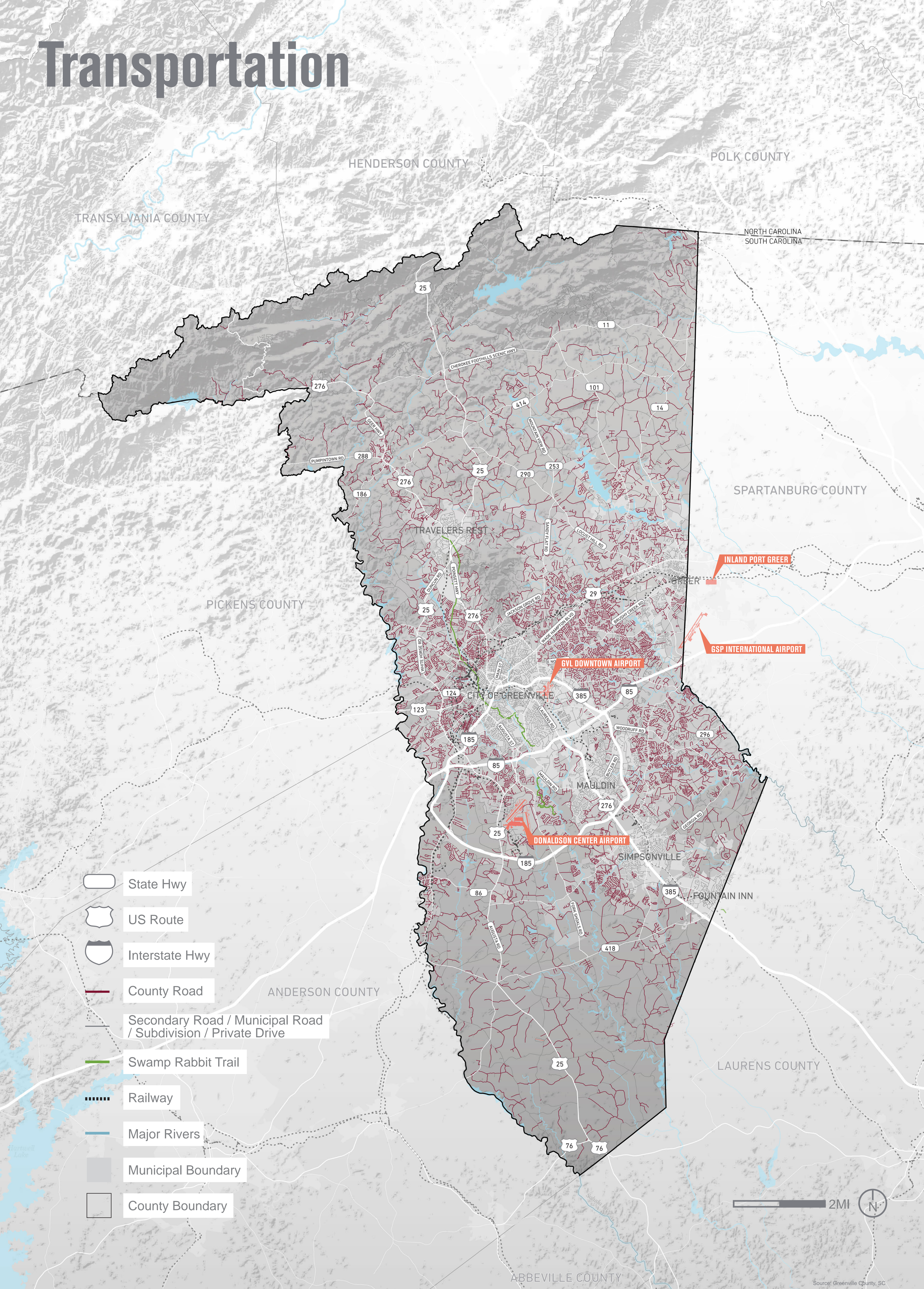
# Move

Greenville County's transportation network is a complex system of infrastructure types, modes, and ownership.

- *What are the most important transportation issues facing Greenville County?*
- *How should we address our transportation issues?*
- *What issues and opportunities do you see for our transportation system?*



# Transportation



- State Hwy
- US Route
- Interstate Hwy
- County Road
- Secondary Road / Municipal Road / Subdivision / Private Drive
- Swamp Rabbit Trail
- Railway
- Major Rivers
- Municipal Boundary
- County Boundary

2MI

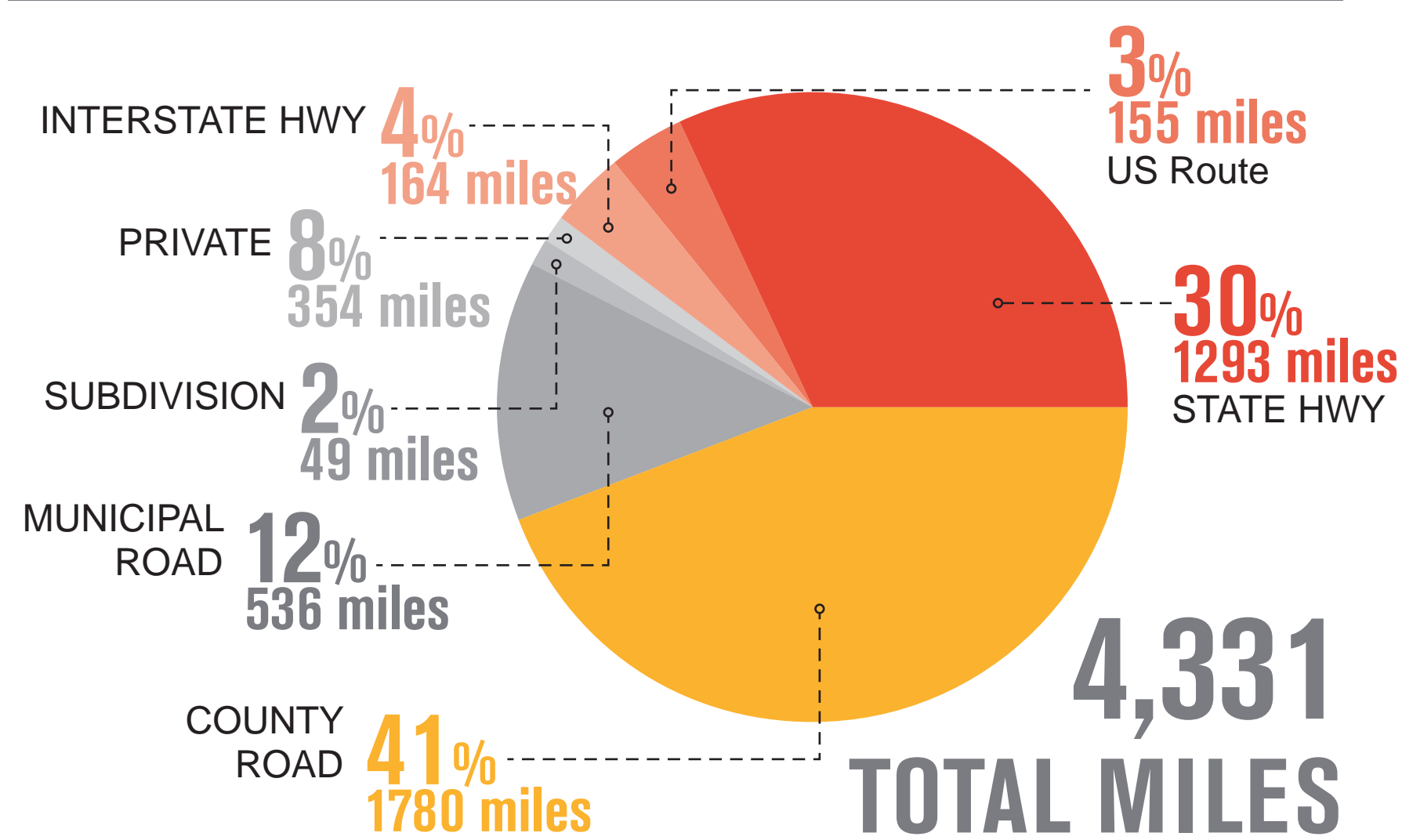
Source: Greenville County, SC



# Transportation

## EXISTING BICYCLE AND PEDESTRIAN INFRASTRUCTURE AND GREENLINK BUS ROUTE

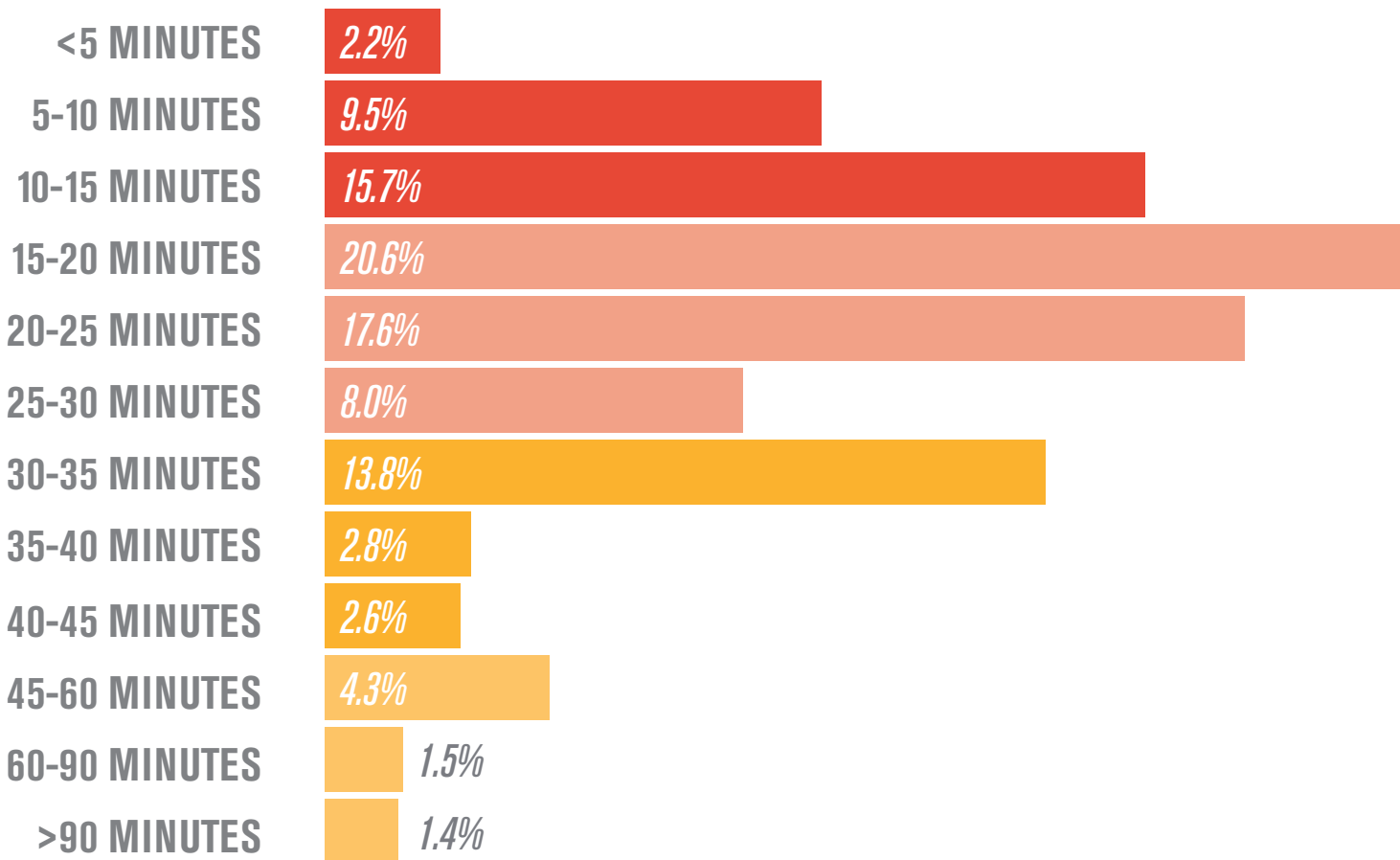
### ROAD CLASSIFICATION



Source: Greenville County, SC

### COMMUTE AND MODE SPLIT

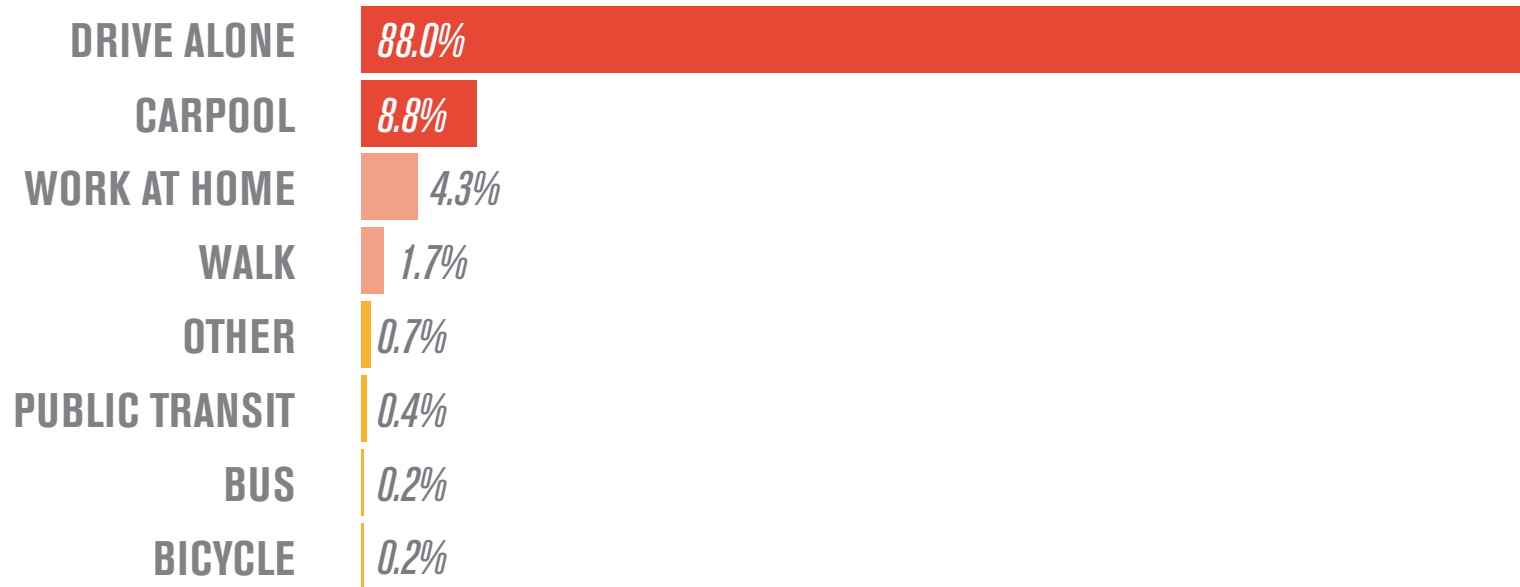
#### AVERAGE COMMUTE TIME



Source: U.S. Census American Community Survey via Esri

**72%** OF EMPLOYEES IN GREENVILLE COUNTY COMMUTE TO WORK IN UNDER 30 MINUTES

#### HOW PEOPLE GET TO WORK



Source: U.S. Census American Community Survey via Esri

**97%** OF EMPLOYEES IN GREENVILLE COUNTY DRIVE ALONE OR CARPOOL TO WORK

GREENLINK PROVIDES **11** FIXED ROUTES & **1** DOWNTOWN TROLLEY

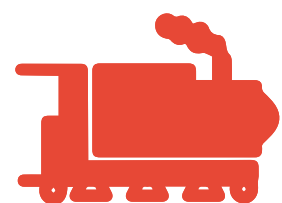
Source: GPATS Long-Range Transportation Plan

### RAIL AND FREIGHT



**+/- 155 MILES**

FHWA-DESIGNATED FREIGHT ROAD IN GREENVILLE COUNTY



**+/- 115 MILES**

RAILWAY IN GREENVILLE COUNTY

Source: Greenville County

### AIRPORTS & INLAND PORT



**GSP**

GREENVILLE/SPARTANBURG INTERNATIONAL AIRPORT (COMMERCIAL & CARGO)

YEAR	PASSENGERS
2017	2,130,885
2010	1,301,744

**61.5%**

YEAR	CARGO (TONS)
2017	49,395
2010	24,668

**101%**

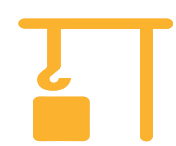
Source: GSP Airport Website

**GDC**

DONALDSON CENTER AIRPORT (CARGO)

**GMU**

GREENVILLE DOWNTOWN AIRPORT (GENERAL AVIATION)



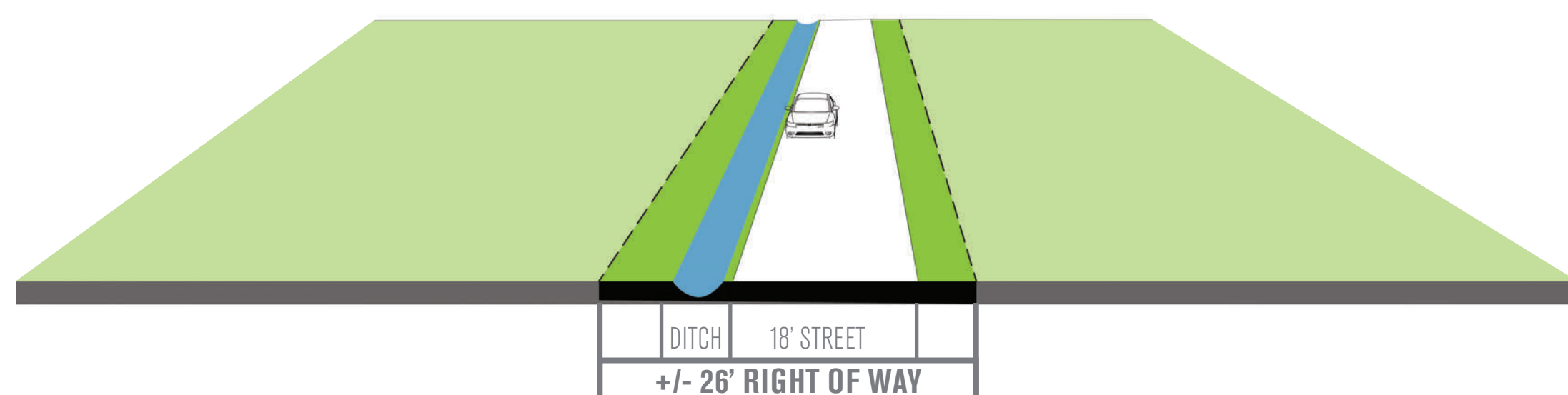
**IPG**

INLAND PORT GREER

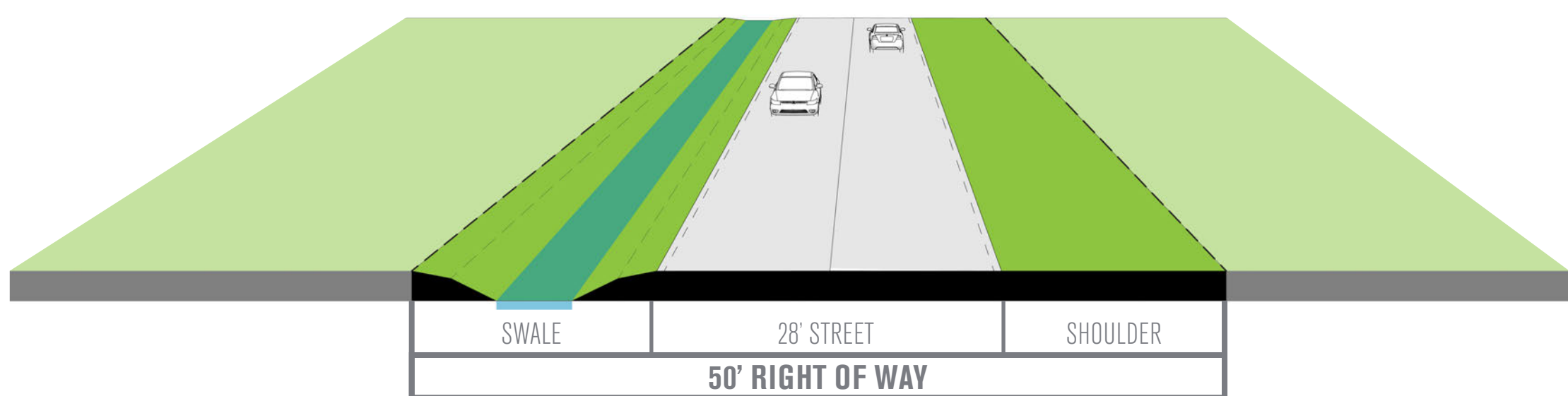
"INLAND PORT GREER OPENED IN OCTOBER 2013, EXTENDING THE PORT OF CHARLESTON'S REACH 212 MILES INLAND TO GREER, S.C., AND PROVIDING SHIPPERS WITH ACCESS TO MORE THAN 95 MILLION CONSUMERS WITHIN A ONE-DAY DRIVE."

Source: South Carolina Ports Website

### TYPICAL COUNTY ROAD SECTION



OLD TYPICAL COUNTY ROAD SECTION



NEW STANDARD COUNTY ROAD SECTION

Source: Greenville County Land Development Regulations, 2017