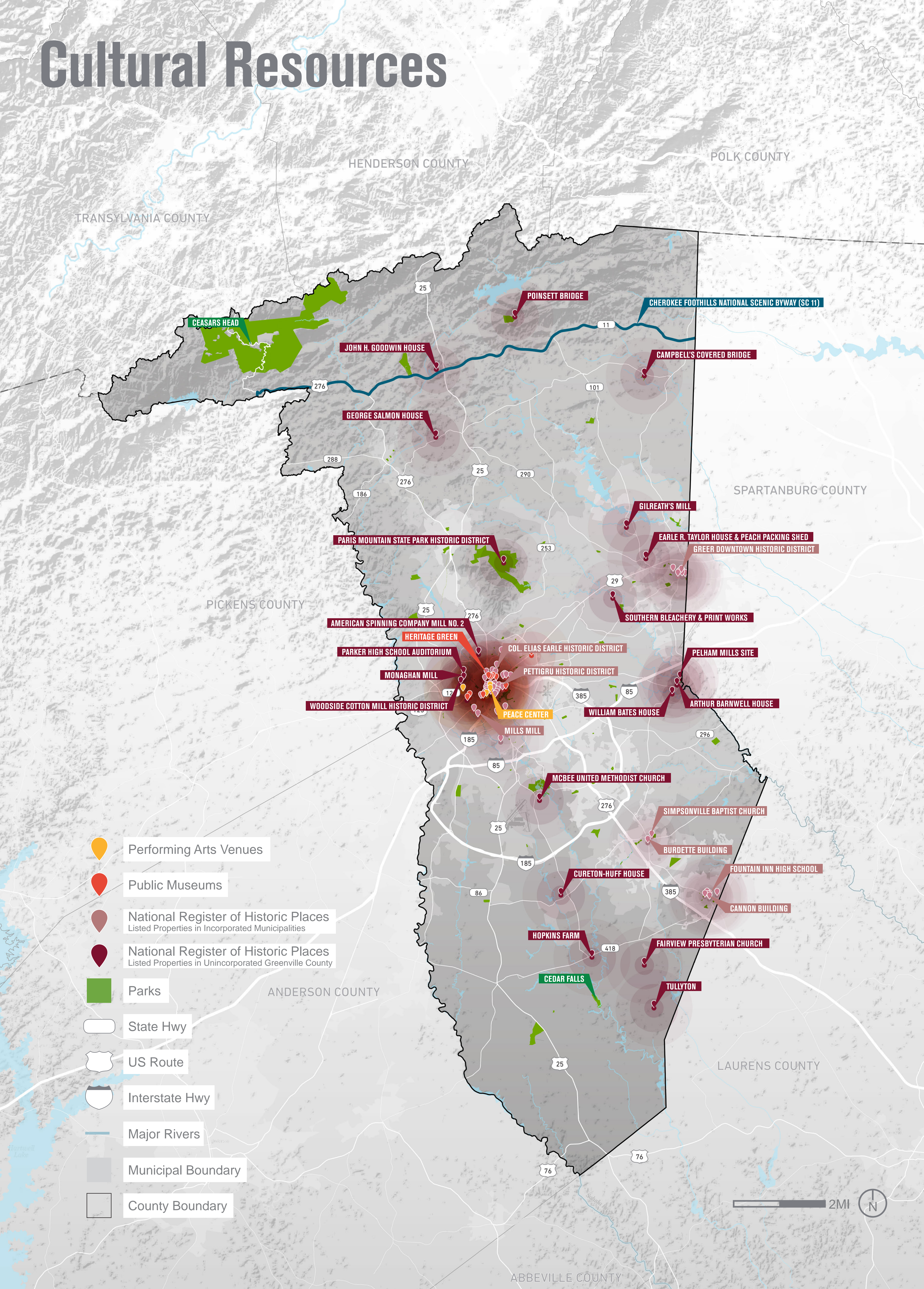


Enrich

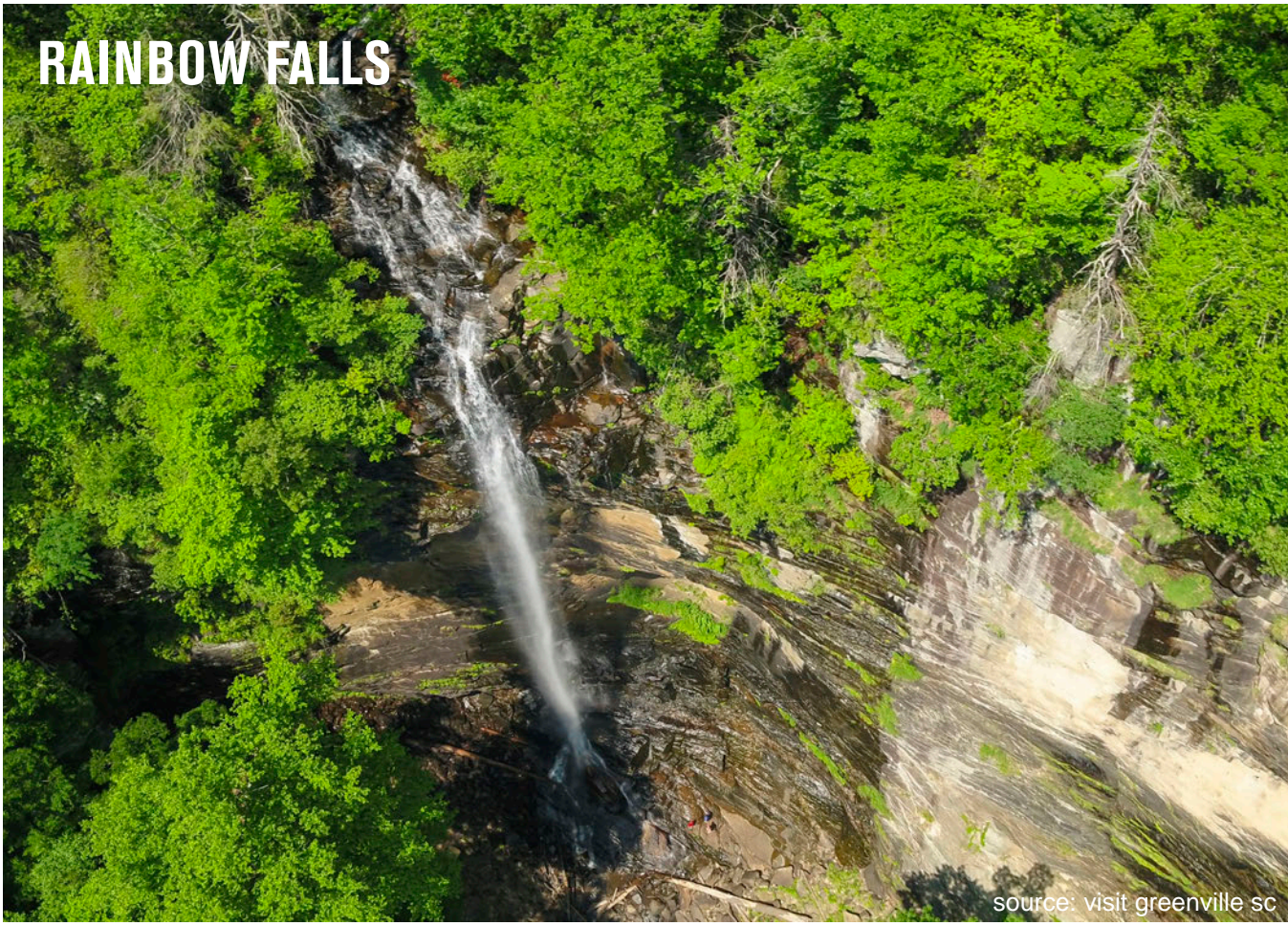
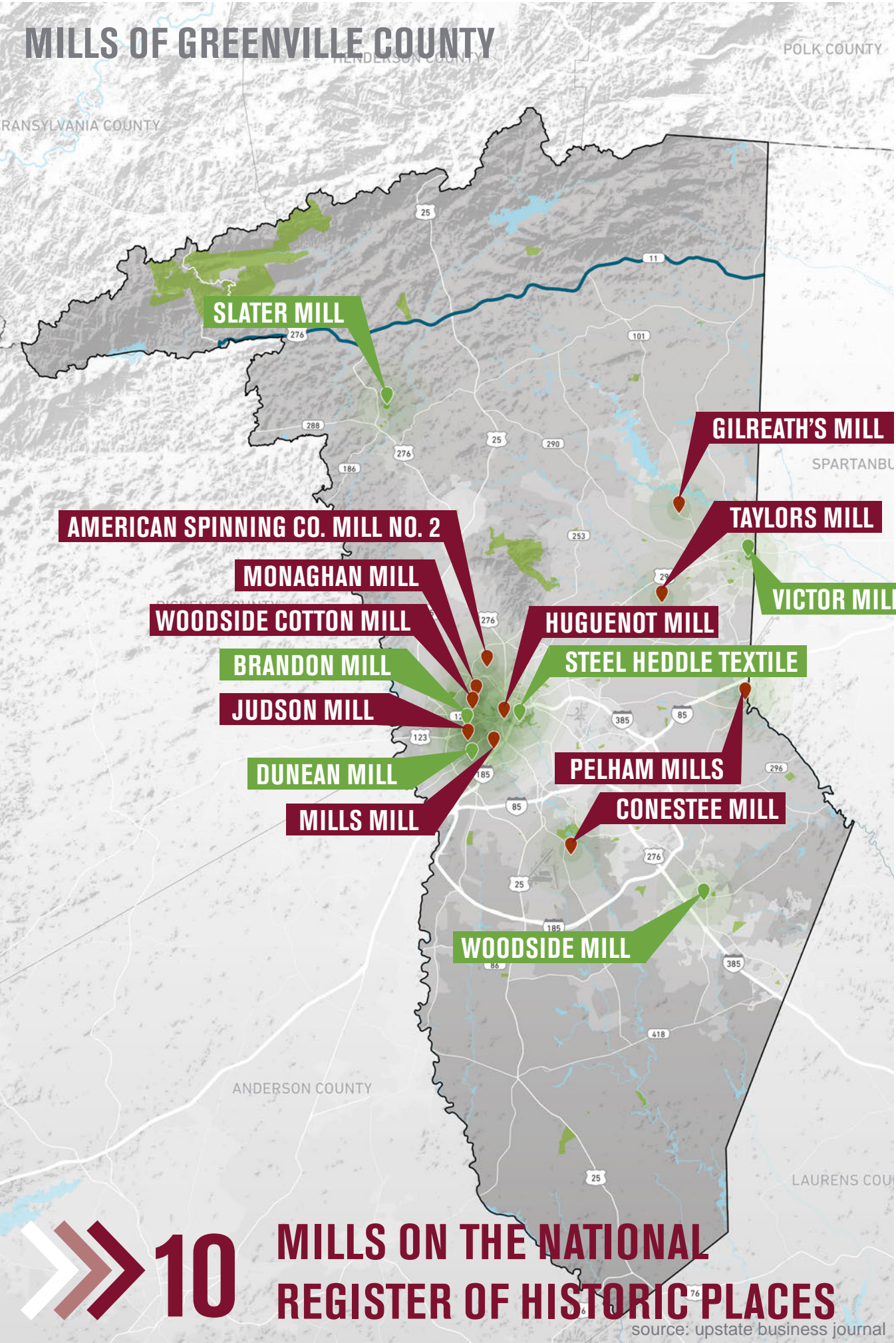
Greenville County is the site of numerous important cultural resources.

- *What are the most important cultural resources in Greenville County?*
- *What stories and places speak to the county's historic and cultural identity?*
- *What issues and opportunities do you see with our cultural resources?*

Cultural Resources



Cultural Resources



1784

GREENVILLE COUNTY ESTABLISHED

1869

CITY OF GREENVILLE ESTABLISHED

1876

GREER INCORPORATED

1886

FOUNTAIN INN INCORPORATED

1891

TRAVELERS REST INCORPORATED

1901

SIMPSONVILLE INCORPORATED

1960

MAULDIN INCORPORATED