

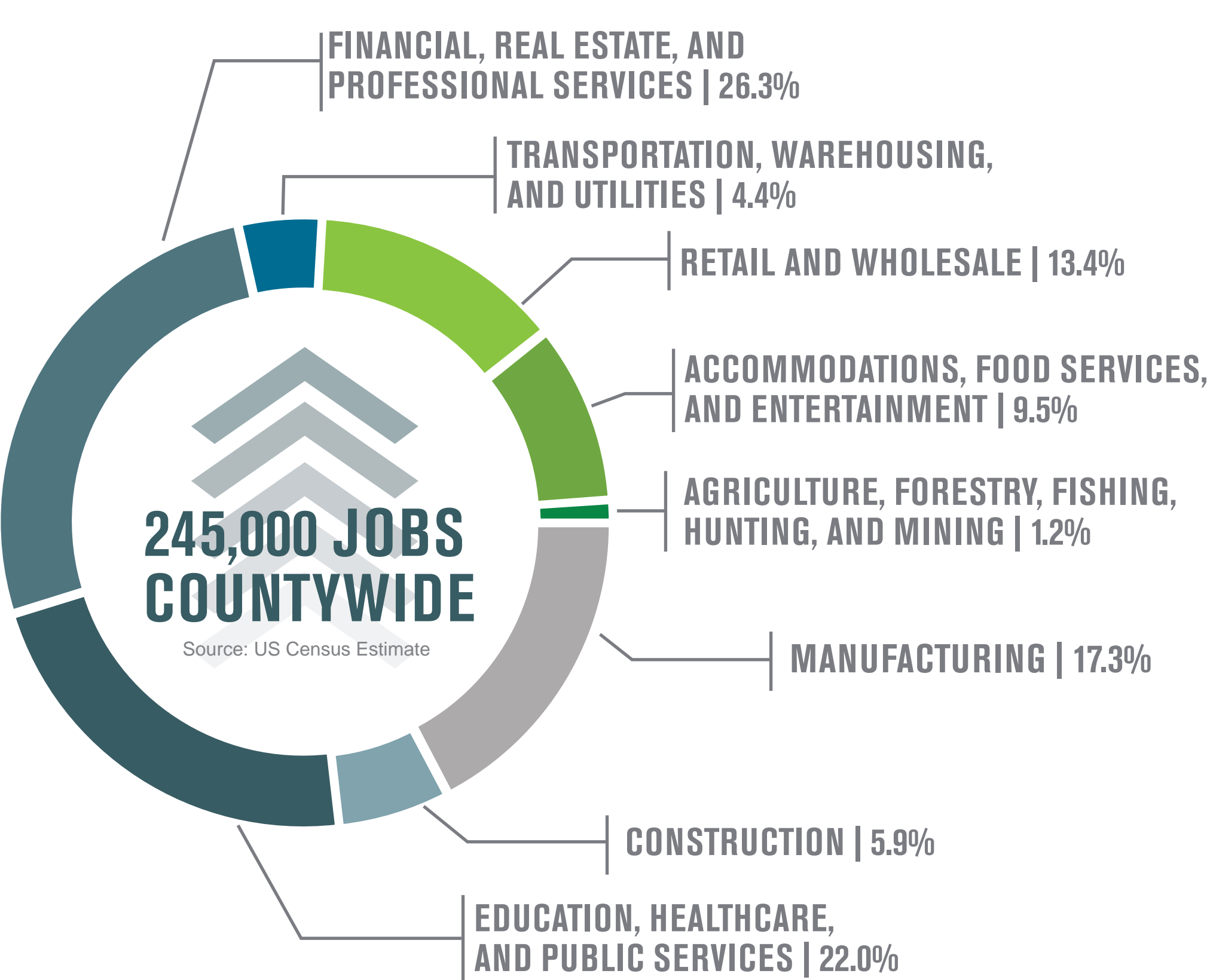
Work

Greenville County is the economic and employment center of the Upstate.

- What kinds of jobs are needed now and should be prioritized in the future?***
- What are some important issues and opportunities for economic development in Greenville County?***

Economic Development

EMPLOYMENT BY SECTOR



LEADING INDUSTRIES



AEROSPACE

Leaders in aerospace such as Lockheed Martin Aircraft and Honeywell chose Greenville County as home because of our proximity to OEMs such as Boeing, Gulfstream, and Airbus and because of our powerful synergies in mobility, materials, and research and manufacturing.



LIFE SCIENCES

Greenville County is recognized as an emerging biotech hub with centers for research in biomaterials, devices, genetic conditions, genomic profiling, and cancer research with South Carolina's School of Medicine-Greenville, Prisma Health, and Bon Secours St. Francis Health System leading the way in research and wellness.



ENGINEERED MATERIALS

The Upstate develops and produces innovative materials in the areas of plastics, optics/photonics, textiles, ceramics, and metals used as the building blocks for some of the world's most complex products. The region's portion of those employed in the sector is 77% above the national average and growing.



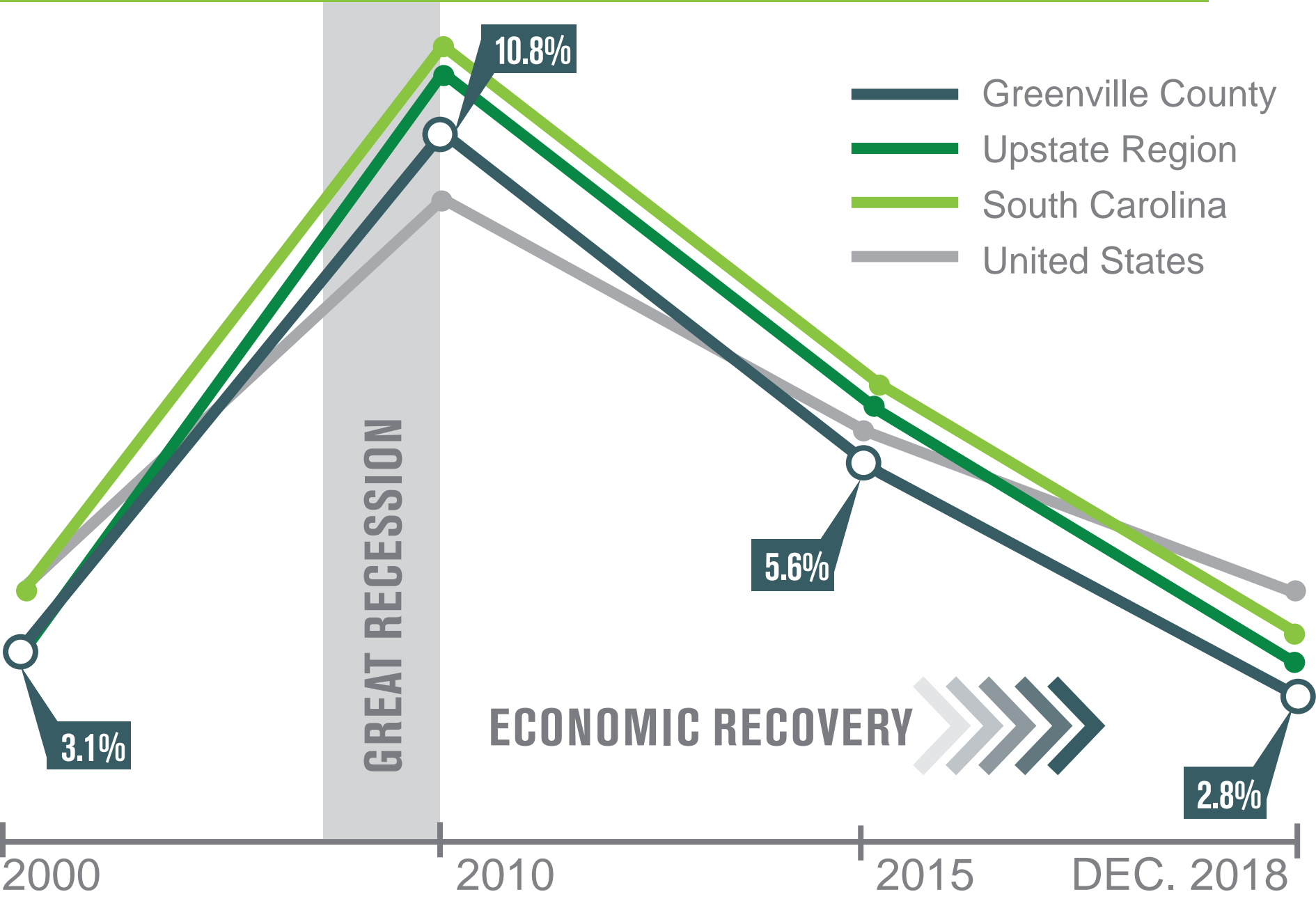
AUTOMOTIVE

With more than 250 automotive-related companies, the Upstate continues to be a prime location for the automotive industry. Home to industry leaders BMW, ZF, Borg Warner, Bosch, and Michelin, as well as the Clemson University Intl. Center for Automotive Research, the Upstate is a national leader in automotive research and manufacturing.

Source: Upstate SC Alliance, 2017

UNEMPLOYMENT RATE COMPARISON

3RD LOWEST UNEMPLOYMENT RATE OF ALL COUNTIES IN SOUTH CAROLINA



Source: US Bureau of Labor Statistics

SHARE OF UPSTATE JOBS BY SECTOR

GREENVILLE COUNTY HOLDS NEARLY 40% OF TOTAL JOBS IN THE 10-COUNTY UPSTATE REGION

MANUFACTURING

39%

CONSTRUCTION

54%

EDUCATION, HEALTHCARE, AND PUBLIC SERVICES

34%

FINANCIAL, INFORMATION, AND PROFESSIONAL SERVICES

49%

TRANSPORTATION AND WAREHOUSING

46%

RETAIL AND WHOLESALE TRADE

34%

ACCOMMODATIONS AND FOOD SERVICES

36%

AGRICULTURE, FORESTRY, FISHING, HUNTING, AND MINING

14%

Source: EMSI Q4 2018 Data Set

REGIONAL ECONOMIC IMPACTS



INLAND PORT GREER

Inland Port Greer opened in 2013, extending the Port of Charleston's reach more than 200 miles inland, and providing shippers with access to more than 95 million consumers within a one-day drive.

\$53 BILLION Annual Economic Activity

188,000 JOBS Supported by Inland Port

\$912 MILLION Supported Annual Tax Revenue

Source: USC Darla Moore School of Business Study, 2015



GREENVILLE-SPARTANBURG INTERNATIONAL AIRPORT

Increased investment and activity at the Greenville-Spartanburg International Airport have resulted in an economic impact that is more than eight times greater than it was 10 years ago.

\$2.9 BILLION Annual Economic Activity

\$740 MILLION Annual Spending Locally by GSP Passengers

\$294 MILLION Helps Support Annual Tax Revenue

Source: GSP International Airport Economic Impact Study, 2018



BMW SPARTANBURG

Located just outside Greenville County, the BMW Spartanburg production plant contributes directly to the local economy as well as indirectly by supporting suppliers and the allied automotive sectors.

\$16.6 BILLION Annual Economic Activity

30,800 JOBS Direct and Indirect Jobs Associated with the Plant

\$1.8 BILLION Direct and Indirect Labor Income Generated

Source: USC Two Decades of Economic Development, 2014



GREENVILLE TOURISM & VISITORS

Visitors from all around the globe travel to Greenville County to experience unique local offerings, the scenic and recreational opportunities in the Blue Ridge Mountains, and for business purposes. Target marketing has helped to increase visitors and grow the economic benefits of tourism.

\$1.2 BILLION Annual Visitor Spending

\$72.3 MILLION Annual Tax Revenue Gained From Visitor Spending

10,300 JOBS Help Support Wages and Salaries for Jobs

Source: Visit Greenville Research and Statistics, 2018