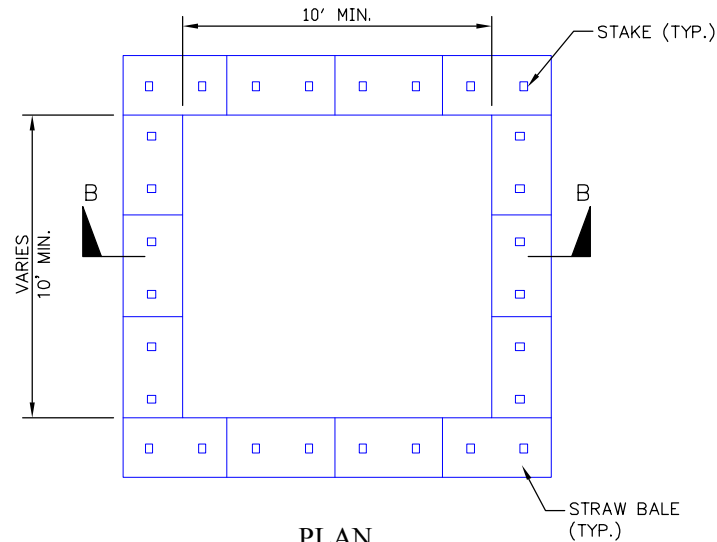
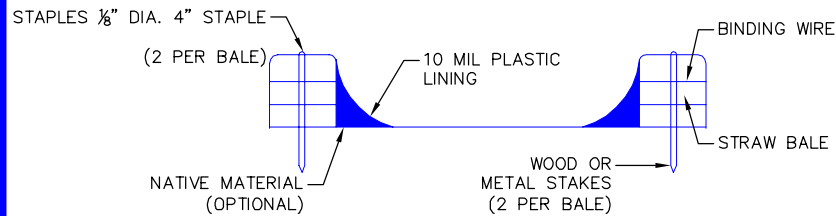


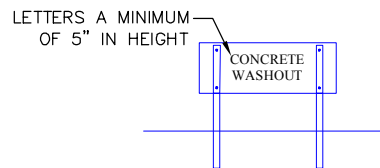
## STRAW BALE BARRIER CONCRETE WASHOUT



**PLAN**  
NOT TO SCALE  
TYPE "ABOVE GRADE"  
WITH STRAW BALES



**SECTION B-B**  
NOT TO SCALE

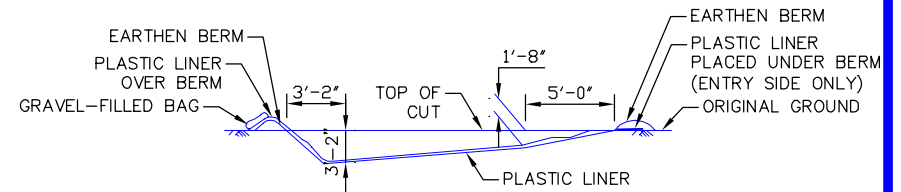


**CONCRETE WASHOUT SIGN DETAIL**  
NOT TO SCALE

### NOTES:

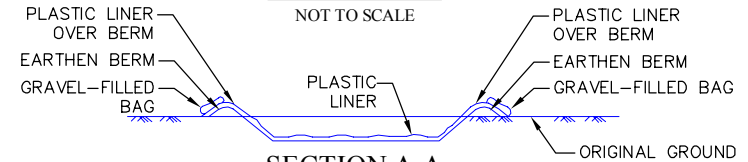
1. ACTUAL LAYOUT DETERMINED IN FIELD.
2. INSTALL CONCRETE WASHOUT SIGN (24"X24", MINIMUM) WITHIN 30' OF THE TEMPORARY CONCRETE WASHOUT FACILITY.
3. TEMPORARY WASHOUT AREA MUST BE AT LEAST 50' FROM A STORM DRAIN, CREEK BANK OR PERIMETER CONTROL.
4. CLEAN OUT CONCRETE WASHOUT AREA WHEN 50% FULL.

## EXCAVATED PIT CONCRETE WASHOUT



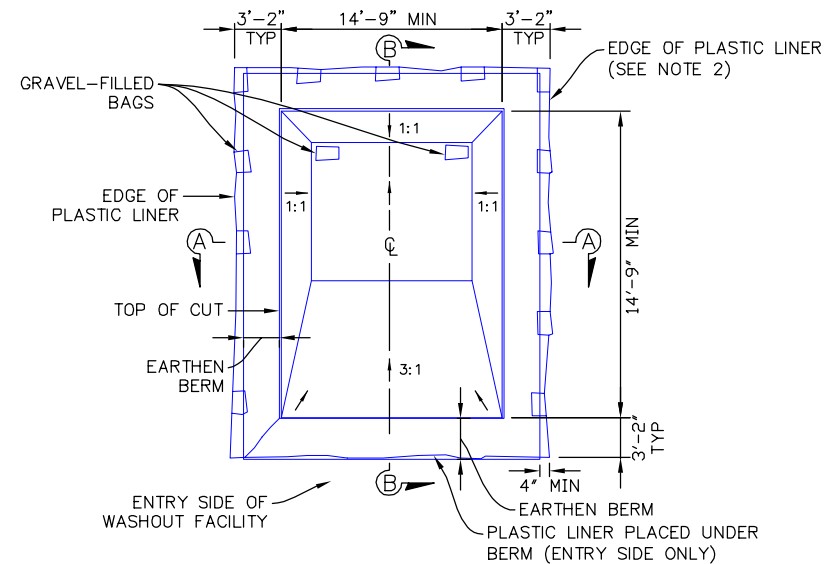
**SECTION B-B**

NOT TO SCALE



**SECTION A-A**

NOT TO SCALE



**TEMPORARY CONCRETE WASHOUT**

NOT TO SCALE



**Greenville County**  
**Storm Water Management**

## CONCRETE WASHOUT DETAIL

STANDARD DRAWING NO.

SC-14

APPROVED BY: \_\_\_\_\_  
GREENVILLE COUNTY STORM WATER MANAGEMENT

JANUARY, 2018  
DATE