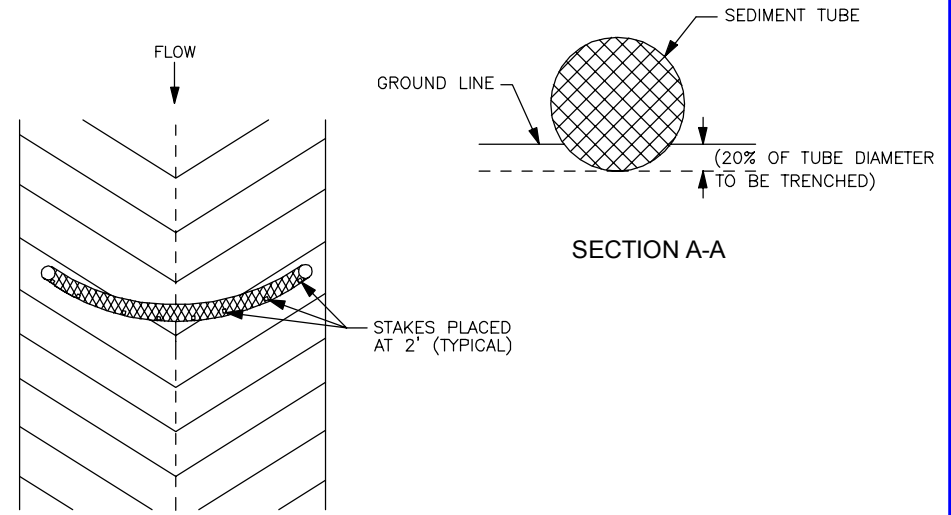


NOTES:

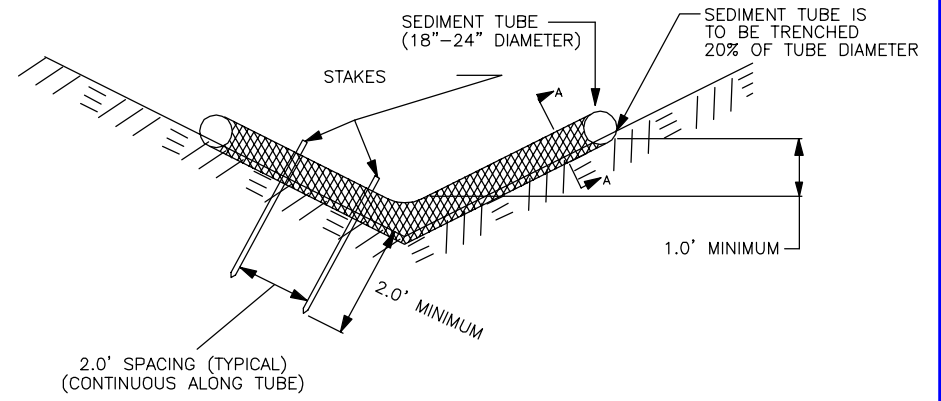
1. SEDIMENT TUBE WILL COMPLY WITH THE REQUIREMENTS OF THE SEDIMENT TUBES FOR DITCH CHECK SPECIFICATION, AND MUST BE LISTED ON SCDOT QUALIFIED PRODUCT LIST NUMBER 57.
2. PROPER SITE PREPARATION IS ESSENTIAL TO ENSURE SEDIMENT TUBES ARE IN COMPLETE CONTACT WITH UNDERLYING SOIL. SEDIMENT TUBES ARE TO BE 18-24 INCHES IN DIAMETER AND ARE TO BE TRENCHED TO A DEPTH OF 20% OF TUBE DIAMETER.
3. SEDIMENT TUBES ARE INSTALLED IMMEDIATELY AFTER GRADING AND CONSTRUCTION. SEDIMENT TUBE ARE MAINTAINED DURING SUBGRADE AND BASE PREPARATION UNTIL BASE COURSE IS COMPLETE. SEDIMENT TUBES MAY BE TEMPORARILY MOVED DURING CONSTRUCTION.
4. SEDIMENT TUBES ARE TO BE INSTALLED PERPENDICULAR TO WATER FLOW AND EXTEND UP SIDE SLOPES A MINIMUM OF 1' FOOT ABOVE DESIGN FLOW DEPTH. SPACE TUBES ACCORDING TO THE FOLLOWING TABLE:

SLOPE	MAXIMUM SEDIMENT TUBE SPACING
LESS THAN 2%	150 FEET
2%	100 FEET
3%	75 FEET
4%	50 FEET
5%	40 FEET
6%	30 FEET
GREATER THAN 6%	25 FEET

5. THE SEDIMENT TUBE IS STAKED DOWN WITH 2 INCH BY 2 INCH WOOD STAKES OR 1.25 LBS/ LINEAR FT. STEEL POSTS EVERY 2 FEET ALONG ITS LENGTH. THE STAKES ARE A MINIMUM OF 4 FEET IN LENGTH AND EMBEDDED A MINIMUM OF 2 FEET INTO THE GROUND LEAVING LESS THAN 1 FOOT OF THE STAKE ABOVE THE EXPOSED SEDIMENT TUBE. THE STAKES SHALL BE INTERTWINED WITH THE OUTER MESH ONLY AND SHALL BE PLACED ON THE DOWNSTREAM SIDE OF THE TUBE. REFER TO THE MANUFACTURER'S RECOMMENDATIONS FOR OTHER STAKING DETAILS.
6. SELECT PROPER LENGTH OF TUBE TO MINIMIZE THE NUMBER NEEDED TO SPAN THE WIDTH OF DRAINAGE AREA. ONE CONTINUOUS LENGTH IS PREFERRED COMPARED TO TWO OVERLAPPING TUBES. IF NECESSARY, SEDIMENT TUBES CAN BE LAPPED A MINIMUM OF 6 INCHES TO PREVENT PASSAGE OF FLOW AND SEDIMENT THROUGH FIELD JOINT.
7. INSTALL SEDIMENT TUBES FOR DITCH CHECKS OVER BARE SOIL, MULCHED AREAS, OR EROSION CONTROL BLANKETS. KEEP SEDIMENT TUBES FOR DITCH CHECKS IN PLACE UNTIL FULLY ESTABLISHED VEGETATION AND ROOT SYSTEMS HAVE COMPLETELY DEVELOPED AND CAN SURVIVE ON THEIR OWN.
8. INSPECT SEDIMENT TUBES AFTER INSTALLATION FOR GAPS UNDER THE SEDIMENT TUBES AND FOR GAPS BETWEEN THE JOINTS OF ADJACENT ENDS OF SEDIMENT TUBES. INSPECT SEDIMENT TUBES EVERY 7 DAYS. REPAIR ALL RILLS, GULLIES, AND UNDERCUTTING NEAR SEDIMENT TUBES. REMOVE ALL SEDIMENT DEPOSITS THAT IMPAIR THE FILTRATION CAPABILITY OF SEDIMENT TUBES WHEN THE SEDIMENT REACHES 1/3 THE HEIGHT OF THE EXPOSED SEDIMENT TUBE.
9. REMOVE AND/OR REPLACE INSTALLED SEDIMENT TUBES AS REQUIRED TO ADAPT TO CHANGING CONSTRUCTION SITE CONDITIONS. REMOVE SEDIMENT TUBES WHEN THE FUNCTIONAL LONGEVITY IS EXCEEDED AS DETERMINED BY THE ENGINEER, INSPECTOR, OR MANUFACTURER'S REPRESENTATIVE. GATHER SEDIMENT TUBES AND DISPOSE OF THEM IN REGULAR MEANS AS NON-HAZARDOUS, INERT MATERIAL.
10. PRIOR TO FINAL STABILIZATION, BACKFILL ALL TRENCHES, DEPRESSIONS, AND OTHER GROUND DISTURBANCES CAUSED BY THE REMOVAL OF SEDIMENT TUBES.



TOP VIEW OF DITCH



END VIEW OF DITCH

**Greenville County Storm Water Management**

SEDIMENT TUBE DITCH CHECK

STANDARD DRAWING NO. SC-05

APPROVED BY: \_\_\_\_\_ DATE: January, 2018  
GREENVILLE COUNTY STORM WATER MANAGEMENT