

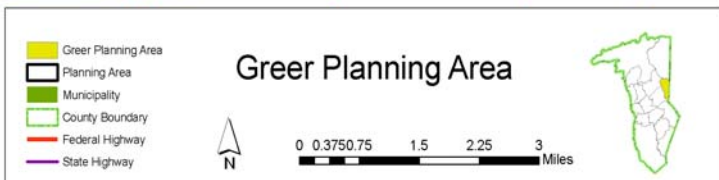
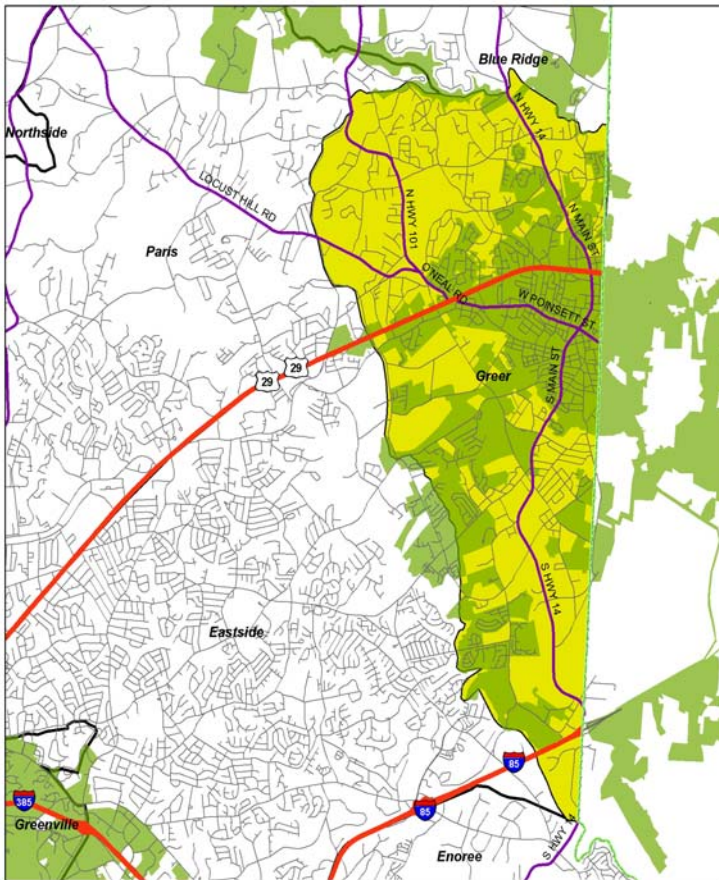
GREER PLANNING AREA

Certificates of Occupancy

	2001	2002	2003	2004	TOTAL
New single-family homes	288	267	287	371	1213

Preliminary Subdivisions

	2001	2002	2003	2004	TOTAL
Residential lots	421	355	103	364	1,243
Residential acres	131	158	31	132	452
Non-residential lots	0	4	0	0	4
Non-residential acres	0	22	0	0	22
Unzoned lots	35	0	42	0	77
Unzoned acres	28	0	33	0	61
TOTAL LOTS	456	359	145	364	1,324
TOTAL ACRES	159	180	64	132	535



Rezoning Activity

	*2001	*2002	*2003	2004
Acres rezoned residential	1010.0	0.0	2.0	3.6
Acres rezoned commercial	18.8	1.0	1.0	6.3
Acres rezoned industrial	27.1	1.7	0.0	7.8
Acres rezoned planned development	0.0	17.7	0.0	14.3
TOTAL	1055.9	20.4	3.0	32.0

*Does not include municipal data

2000 Census Data

Population: 15,521
 Area: 18.2 square miles
 High school graduation rate: 75.9%
 College graduation rate: 18.2%
 South Carolina born: 65.0%
 Housing units: 6,827
 English not spoken at home: 7.0%
 Per capita income: \$20,151
 Poverty rate: 10.7%
 % Vacant: 6.8%
 % Rented: 29.9%
 % Multi-family: 12.1%
 Average household size: 2.44 people per household
 Population density: 852 people per square mile