

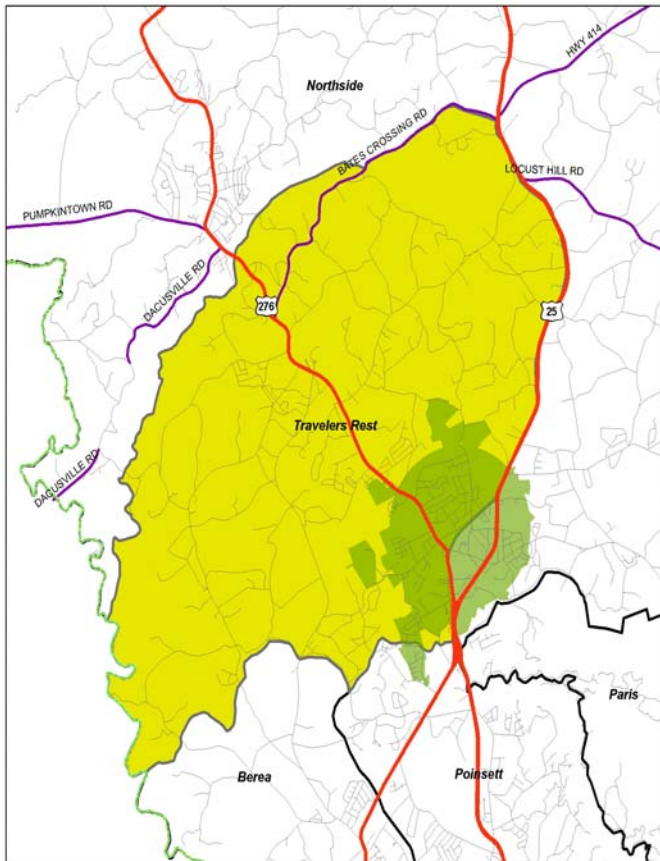
TRAVELERS REST PLANNING AREA

Certificates of Occupancy

| | 2001 | 2002 | 2003 | 2004 | TOTAL |
|-------------------------|------|------|------|------|-------|
| New single-family homes | 32 | 32 | 45 | 44 | 153 |

Subdivisions

| | 2001 | 2002 | 2003 | 2004 | TOTAL |
|-----------------------|-----------|------------|-----------|-----------|------------|
| Residential lots | 0 | 289 | 32 | 72 | 393 |
| Residential acres | 0 | 124 | 27 | 36 | 186 |
| Non-residential lots | 1 | 0 | 0 | 0 | 1 |
| Non-residential acres | 95 | 0 | 0 | 0 | 0 |
| Unzoned lots | 0 | 39 | 0 | 0 | 39 |
| Unzoned acres | 0 | 21 | 0 | 0 | 21 |
| TOTAL LOTS | 1 | 328 | 32 | 72 | 433 |
| TOTAL ACRES | 95 | 145 | 27 | 36 | 208 |



Rezoning Activity

| | *2001 | *2002 | *2003 | 2004 |
|-----------------------------------|------------|------------|------------|-------------|
| Acres rezoned residential | 2.5 | 0.0 | 0.0 | 35.8 |
| Acres rezoned commercial | 3.5 | 0.0 | 0.0 | 0.0 |
| Acres rezoned industrial | 0.0 | 0.0 | 0.0 | 0.0 |
| Acres rezoned planned development | 0.0 | 0.0 | 0.0 | 0.0 |
| TOTAL | 6.0 | 0.0 | 0.0 | 35.8 |

*Does not include municipal data

2000 Census Data

Population: 9,704
 Area: 31.7 square miles
 High school graduation rate: 74.7%
 College graduation rate: 14.1%
 South Carolina born: 65.1%
 Housing units: 3,916
 English not spoken at home: 4.1%
 Per capita income: \$18,251
 Poverty rate: 10.6%
 % Vacant: 7.3%
 % Rented: 24.8%
 % Multi-family: 9.7%
 Average household size: 2.67 people per household
 Population density: 306 people per square mile