

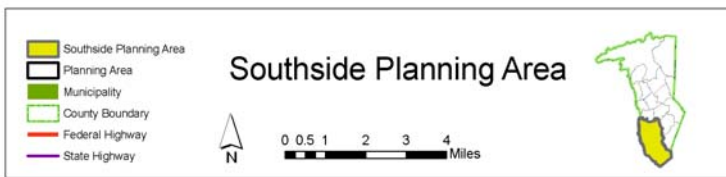
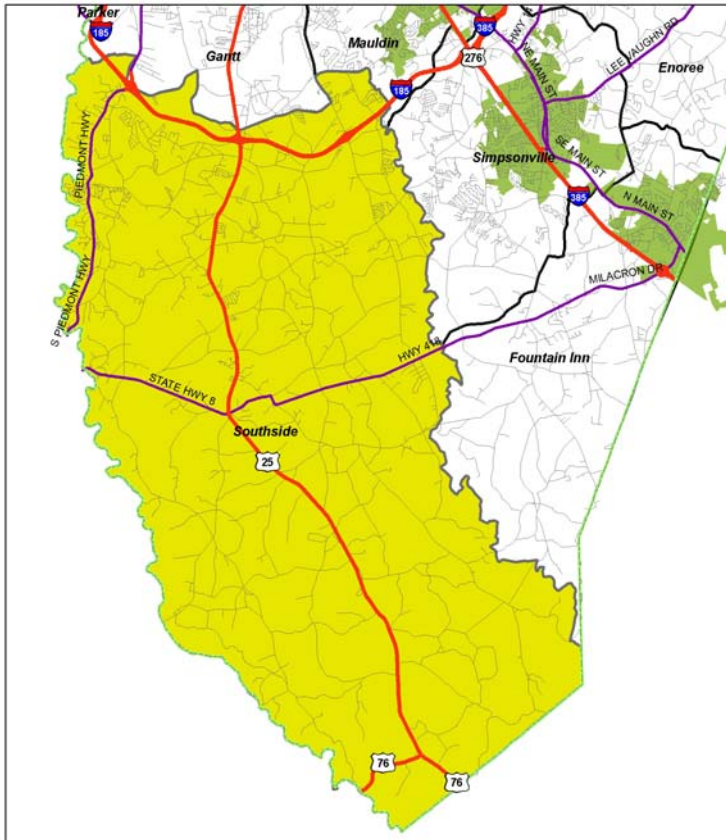
SOUTHSIDE PLANNING AREA

Certificates of Occupancy

	2001	2002	2003	2004	TOTAL
New single-family homes	168	151	120	165	604

Subdivisions

	2001	2002	2003	2004	TOTAL
Residential lots	199	349	528	20	1,096
Residential acres	90	128	470	39	726
Non-residential lots	0	0	0	0	0
Non-residential acres	0	0	0	0	0
Unzoned lots	1	80	6	0	87
Unzoned acres	30	58	14	0	102
TOTAL LOTS	200	429	534	20	1,183
TOTAL ACRES	120	185	483	39	827



Rezoning Activity

	2001	2002	2003	2004
Acres rezoned residential	108.3	3.9	5.4	3.0
Acres rezoned commercial	5.0	4.8	1.0	31.4
Acres rezoned industrial	207.2	0.0	34.6	0.5
Acres rezoned planned development	0.0	59.5	0.0	0.0
TOTAL	320.5	68.2	41.0	34.9

2000 Census Data

Population: 21,493
 Area: 141.2 square miles
 High school graduation rate: 71.8%
 College graduation rate: 10.0%
 South Carolina born: 72.7%
 Housing units: 8,547
 English not spoken at home: 2.4%
 Per capita income: \$16,740
 Poverty rate: 8.4%
 % Vacant: 7.7%
 % Rented: 15.0%
 % Multi-family: 0.5%
 Average household size: 2.72 people per household
 Population density: 152 people per square mile