

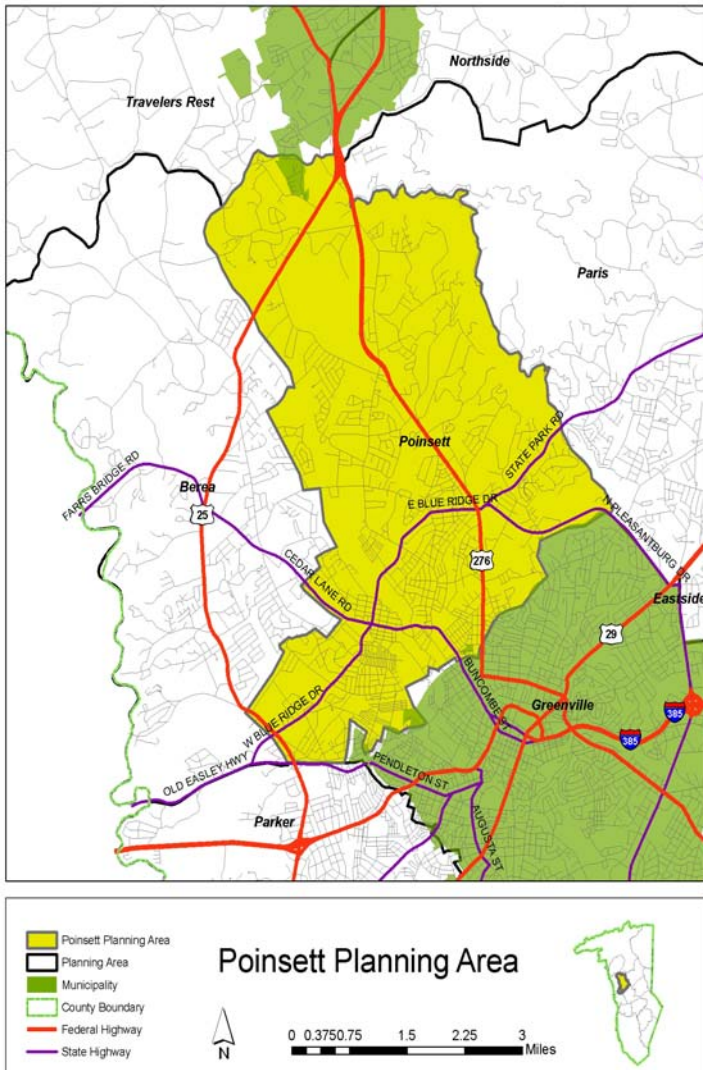
POINSETT PLANNING AREA

Certificates of Occupancy

	2001	2002	2003	2004	TOTAL
New single-family homes	82	119	88	79	368

Preliminary Subdivisions

	2001	2002	2003	2004	TOTAL
Residential lots	153	319	275	219	966
Residential acres	96	100	120	130	445
Non-residential lots	31	1	0	0	32
Non-residential acres	30	2	0	0	0
Unzoned lots	0	0	0	0	0
Unzoned acres	0	0	0	0	0
TOTAL LOTS	184	320	275	219	998
TOTAL ACRES	126	101	120	130	445



Rezoning Activity

	*2001	*2002	*2003	2004
Acres rezoned residential	4.0	17.8	1.0	9.8
Acres rezoned commercial	1.9	4.1	1.0	13.2
Acres rezoned industrial	0.0	0.0	0.0	0.0
Acres rezoned planned development	4.0	36.0	0.0	20.6
TOTAL	9.9	57.9	2.0	43.6

*Does not include municipal data

2000 Census Data

Population: 28,523
 Area: 19.6 square miles
 High school graduation rate: 63.7%
 College graduation rate: 12.3%
 South Carolina born: 62.1%
 Housing units: 12,044
 English not spoken at home: 7.7%
 Per capita income: \$14,876
 Poverty rate: 18.3%
 % Vacant: 11.1%
 % Rented: 42.2%
 % Multi-family: 19.7%
 Average household size: 2.66 people per household
 Population density: 1457 people per square mile