

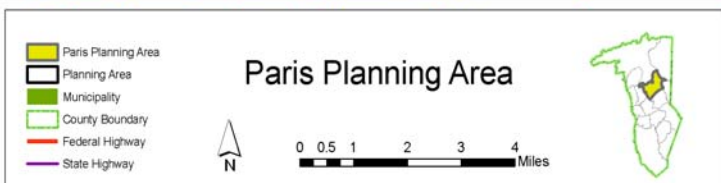
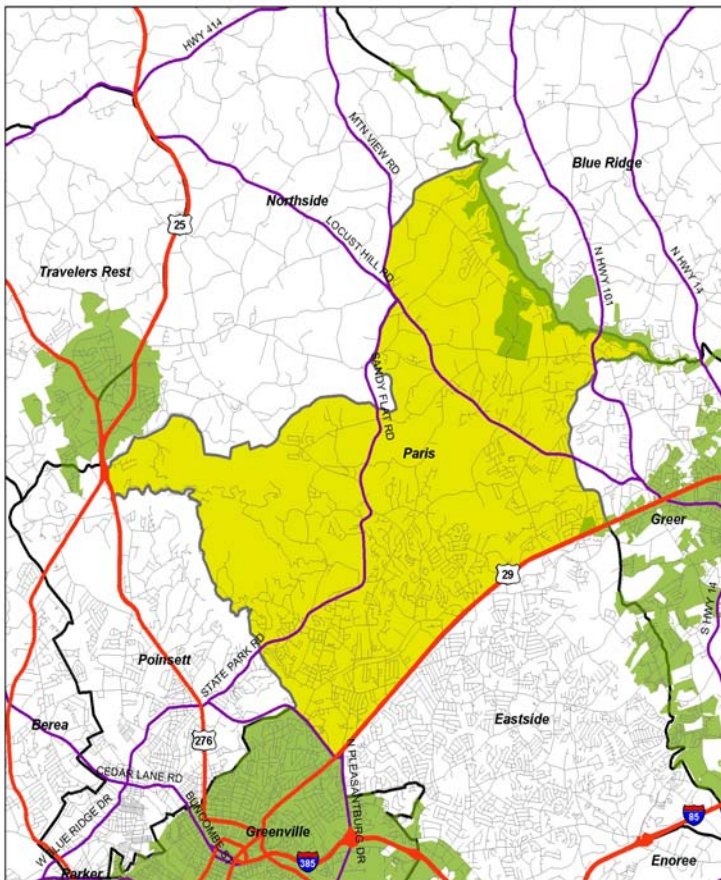
PARIS PLANNING AREA

Certificates of Occupancy

	2001	2002	2003	2004	TOTAL
New single-family homes	254	267	133	194	848

Preliminary Subdivisions

	2001	2002	2003	2004	TOTAL
Residential lots	15	184	151	13	363
Residential acres	15	60	39	7	121
Non-residential lots	0	0	0	0	0
Non-residential acres	0	0	0	0	0
Unzoned lots	47	139	139	3	328
Unzoned acres	39	80	69	45	233
TOTAL LOTS	62	323	290	16	691
TOTAL ACRES	54	140	108	53	355



Rezoning Activity

	*2001	*2002	*2003	2004
Acres rezoned residential	1010.0	9.7	2.4	38.7
Acres rezoned commercial	5.3	0.0	0.0	0.6
Acres rezoned industrial	1.0	0.0	9.0	1.0
Acres rezoned planned development	0.0	0.5	0.0	0.0
TOTAL	1016.3	10.2	11.4	40.4

*Does not include municipal data

2000 Census Data

Population: 28,168
 Area: 42.4 square miles
 High school graduation rate: 84.4%
 College graduation rate: 28.2%
 South Carolina born: 54.8%
 Housing units: 11,741
 English not spoken at home: 7.8%
 Per capita income: \$23,261
 Poverty rate: 7.2%
 % Vacant: 6.5%
 % Rented: 23.8%
 % Multi-family: 14.6%
 Average household size: 2.57 people per household
 Population density: 664 people per square mile