

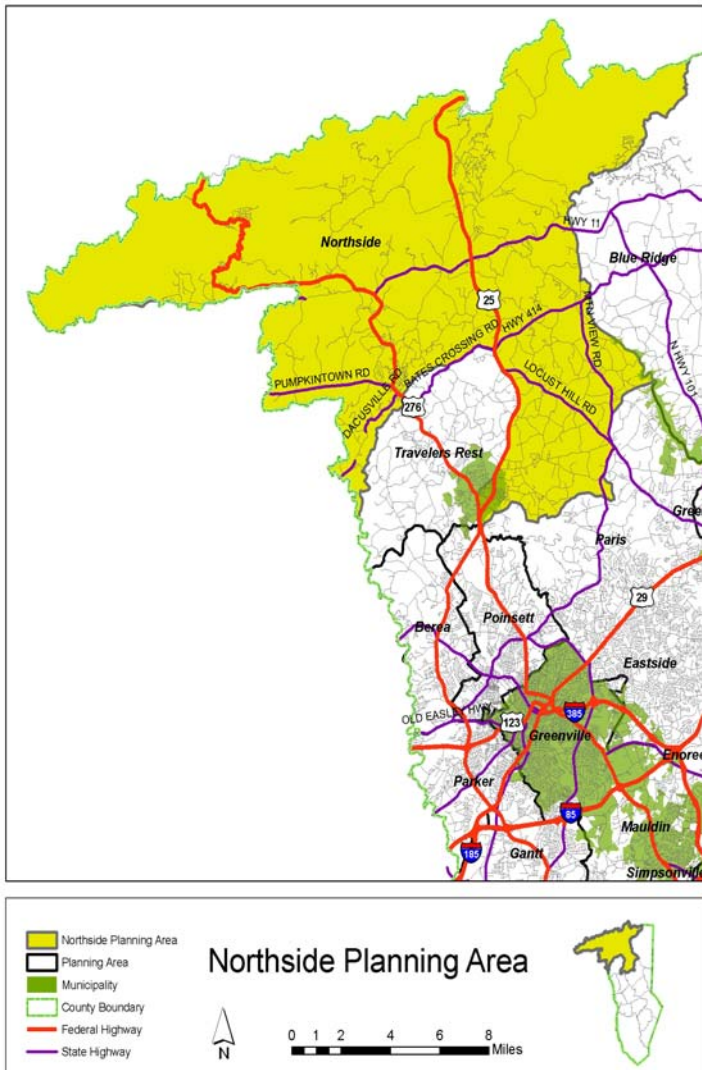
NORTHSIDE PLANNING AREA

Certificates of Occupancy

	2001	2002	2003	2004	TOTAL
New single-family homes	78	103	94	148	423

Preliminary Subdivisions

	2001	2002	2003	2004	TOTAL
Residential lots	0	31	0	136	167
Residential acres	0	25	0	96	121
Non-residential lots	0	0	0	0	0
Non-residential acres	0	0	0	0	0
Unzoned lots	32	153	457	245	887
Unzoned acres	135	117	308	323	883
TOTAL LOTS	32	184	457	381	1,054
TOTAL ACRES	135	142	308	419	1,004



Rezoning Activity

	*2001	*2002	*2003	2004
Acres rezoned residential	120.0	0.0	0.0	58.4
Acres rezoned commercial	0.0	0.0	0.0	3.4
Acres rezoned industrial	0.0	0.0	0.0	0.0
Acres rezoned planned development	0.0	0.0	0.0	0.0
TOTAL	120.0	0.0	0.0	61.8

*Does not include municipal data

2000 Census Data

Population: 14,812
 Area: 190.1 square miles
 High school graduation rate: 69.0%
 College graduation rate: 13.1%
 South Carolina born: 69.0%
 Housing units: 6,223
 English not spoken at home: 3.2%
 Per capita income: \$17,783
 Poverty rate: 10.7%
 % Vacant: 13.0%
 % Rented: 17.9%
 % Multi-family: 1.3%
 Average household size: 2.74 people per household
 Population density: 78 people per square mile