

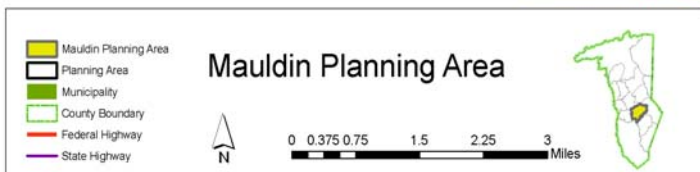
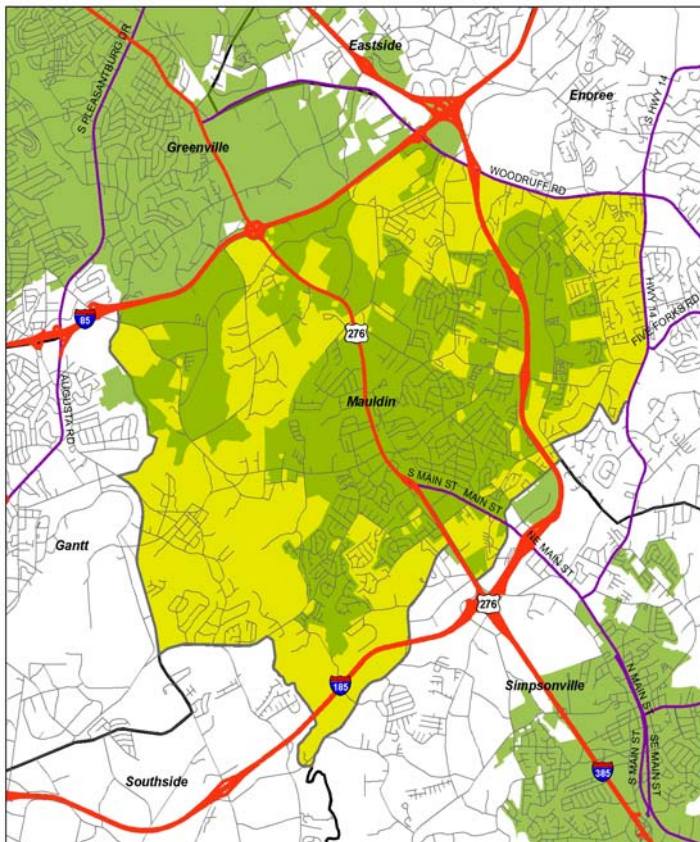
MAULDIN PLANNING AREA

Certificates of Occupancy

	2001	2002	2003	2004	TOTAL
New single-family homes	339	396	326	498	1559

Preliminary Subdivisions

	2001	2002	2003	2004	TOTAL
Residential lots	66	127	435	158	786
Residential acres	21	76	272	55	424
Non-residential lots	84	0	0	9	93
Non-residential acres	25	0	0	32	57
Unzoned lots	0	0	0	0	0
Unzoned acres	0	0	0	0	0
TOTAL LOTS	150	127	435	167	879
TOTAL ACRES	46	76	272	87	481



Rezoning Activity

	*2001	*2002	*2003	2004
Acres rezoned residential	38.6	29.4	31.3	354.0
Acres rezoned commercial	0.2	5.1	6.7	23.6
Acres rezoned industrial	0.8	0.0	0.0	91.6
Acres rezoned planned development	0.0	0.0	29.7	157.9
TOTAL	39.6	34.5	67.7	627.1

*Does not include municipal data

2000 Census Data

Population: 25,554
 Area: 25.6 square miles
 High school graduation rate: 89.3%
 College graduation rate: 33.1%
 South Carolina born: 49.7%
 Housing units: 10,852
 English not spoken at home: 6.5%
 Per capita income: \$24,071
 Poverty rate: 4.7%
 % Vacant: 4.7%
 % Rented: 33.1%
 % Multi-family: 27.6%
 Average household size: 2.49 people per household
 Population density: 1000 people per square mile