

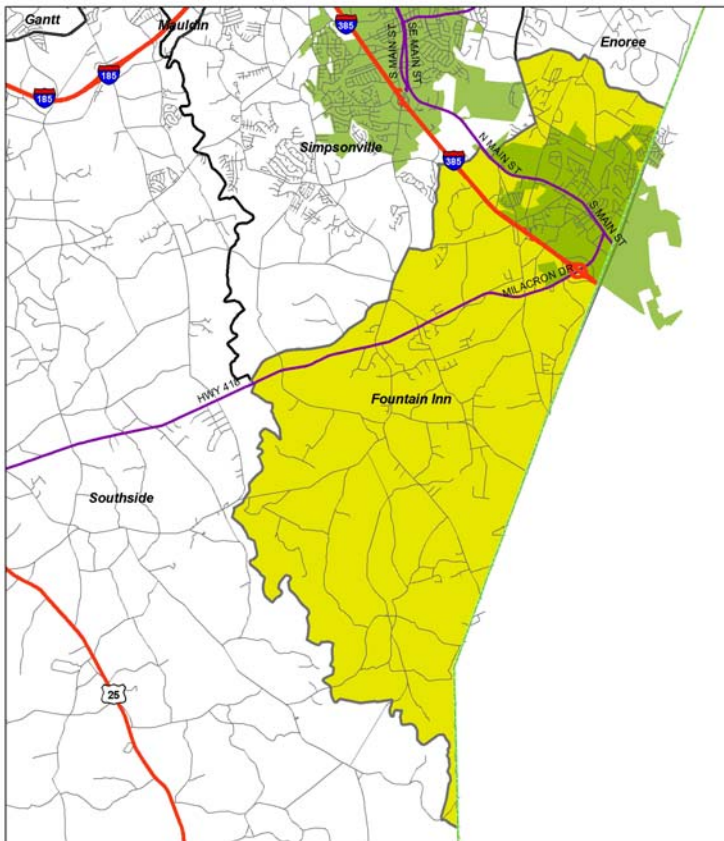
FOUNTAIN INN PLANNING AREA

Certificates of Occupancy

	2001	2002	2003	2004	TOTAL
New single-family homes	92	90	76	63	321

Preliminary Subdivisions

	2001	2002	2003	2004	TOTAL
Residential lots	302	49	171	311	833
Residential acres	116	14	60	249	439
Non-residential lots	0	0	0	0	0
Non-residential	0	0	0	0	0
Unzoned lots	21	0	47	0	68
Unzoned acres	17	0	39	0	56
TOTAL LOTS	323	49	218	311	901
TOTAL ACRES	133	14	99	249	495



Rezoning Activity

	*2001	*2002	*2003	2004
Acres rezoned residential	0.0	0.0	0.0	0.0
Acres rezoned commercial	0.0	0.0	0.0	0.6
Acres rezoned industrial	1.3	0.0	0.0	0.0
Acres rezoned planned development	0.0	0.0	0.0	27.8
TOTAL	1.3	0.0	0.0	28.4

*Does not include municipal data

2000 Census Data

Population: 9,074
 Area: 36.4 square miles
 High school graduation rate: 79.2%
 College graduation rate: 16.1%
 South Carolina born: 70.3%
 Housing units: 3,789
 English not spoken at home: 2.9%
 Per capita income: \$20,910
 Poverty rate: 8.4%
 % Vacant: 7.4%
 % Rented: 21.4%
 % Multi-family: 8.5%
 Average household size: 2.59 people per household
 Population density: 717 people per square mile