

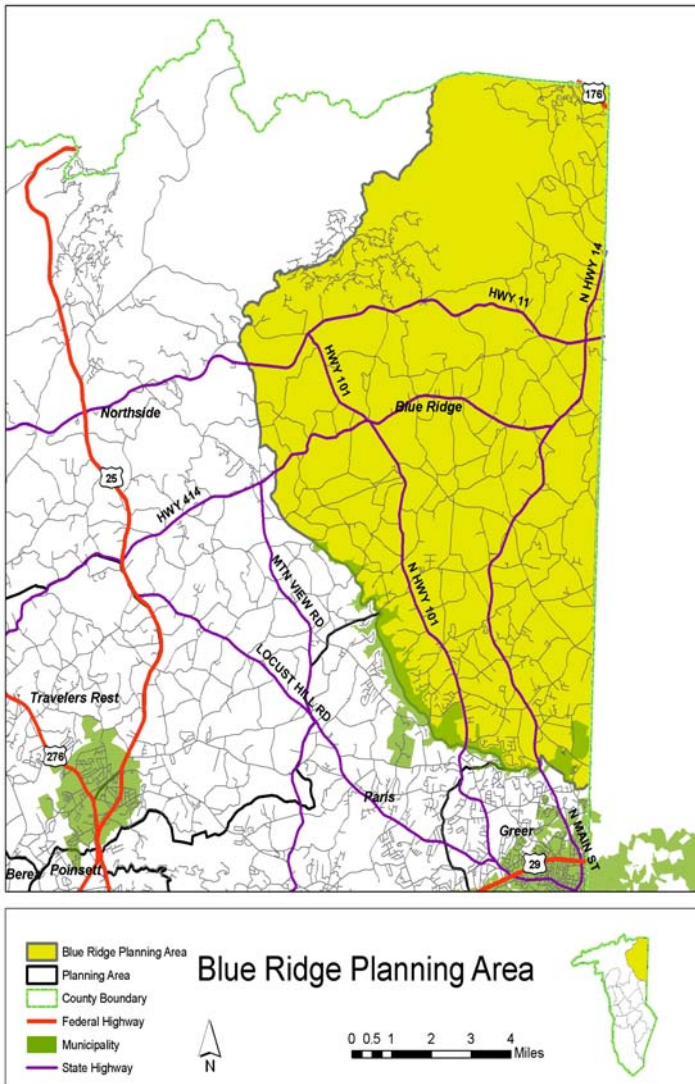
BLUE RIDGE PLANNING AREA

Certificates of Occupancy

	2001	2002	2003	2004	TOTAL
New single-family homes	93	130	197	206	626

Preliminary Subdivisions

	2001	2002	2003	2004	TOTAL
Residential lots	0	0	0	500	500
Residential acres	0	0	0	184	184
Non-residential lots	0	0	0	0	0
Non-residential	0	0	0	0	0
Unzoned lots	191	182	427	317	1,117
Unzoned acres	223	266	404	323	1,216
TOTAL LOTS	191	182	427	817	1,617
TOTAL ACRES	223	266	404	507	1,400



Rezoning Activity

	*2001	*2002	*2003	2004
Acres rezoned residential	0.0	0.0	0.0	0.0
Acres rezoned commercial	0.0	0.0	0.0	0.0
Acres rezoned industrial	0.0	0.0	0.0	0.0
Acres rezoned planned development	0.0	0.0	0.0	181.2
TOTAL	0.0	0.0	0.0	181.2

*Does not include municipal data

2000 Census Data

Population: 10,900
 Area: 109.8 square miles
 High school graduation rate: 74.5%
 College graduation rate: 16.2%
 South Carolina born: 66.0%
 Housing units: 4,644
 English not spoken at home: 2.9%
 Per capita income: \$19,526
 Poverty rate: 8.5%
 % Vacant: 10.4%
 % Rented: 13.2%
 % Multi-family: 0.3%
 Average household size: 2.57 people per household
 Population density: 97 people per square mile