

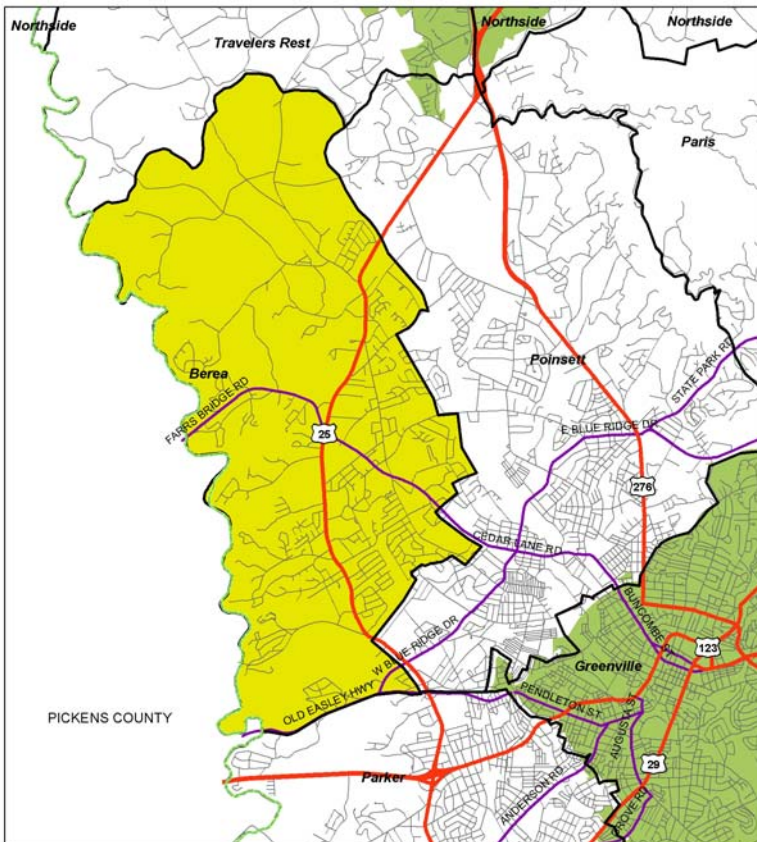
BEREA PLANNING AREA

Certificates of Occupancy

	2001	2002	2003	2004	TOTAL
New single-family homes	23	43	154	60	280

Preliminary Subdivisions

	2001	2002	2003	2004	TOTAL
Residential lots	254	0	134	52	440
Residential acres	85	0	38	13	136
Non-residential lots	0	0	0	0	0
Non-residential	0	0	0	0	0
Unzoned lots	0	0	0	0	0
Unzoned acres	0	0	0	0	0
TOTAL LOTS	254	0	134	52	440
TOTAL ACRES	85	0	38	13	136



Rezoning Activity

	2001	2002	2003	2004
Acres rezoned residential	0.0	0.0	0.0	63.2
Acres rezoned commercial	17.2	41.2	0.0	8.5
Acres rezoned industrial	0.0	0.0	0.0	0.0
Acres rezoned planned development	0.0	0.0	0.0	0.0
TOTAL	17.2	41.2	0.0	71.6

2000 Census Data

Population: 16,987
 Area: 18.3 square miles
 High school graduation rate: 72.2%
 College graduation rate: 9.2%
 South Carolina born: 65.4%
 Housing units: 7,199
 English not spoken at home: 13.2%
 Per capita income: \$16,547
 Poverty rate: 14.9%
 % Vacant: 6.0%
 % Rented: 34.9%
 % Multi-family: 26.4%
 Average household size: 2.51 people per household
 Population density: 927 people per square mile