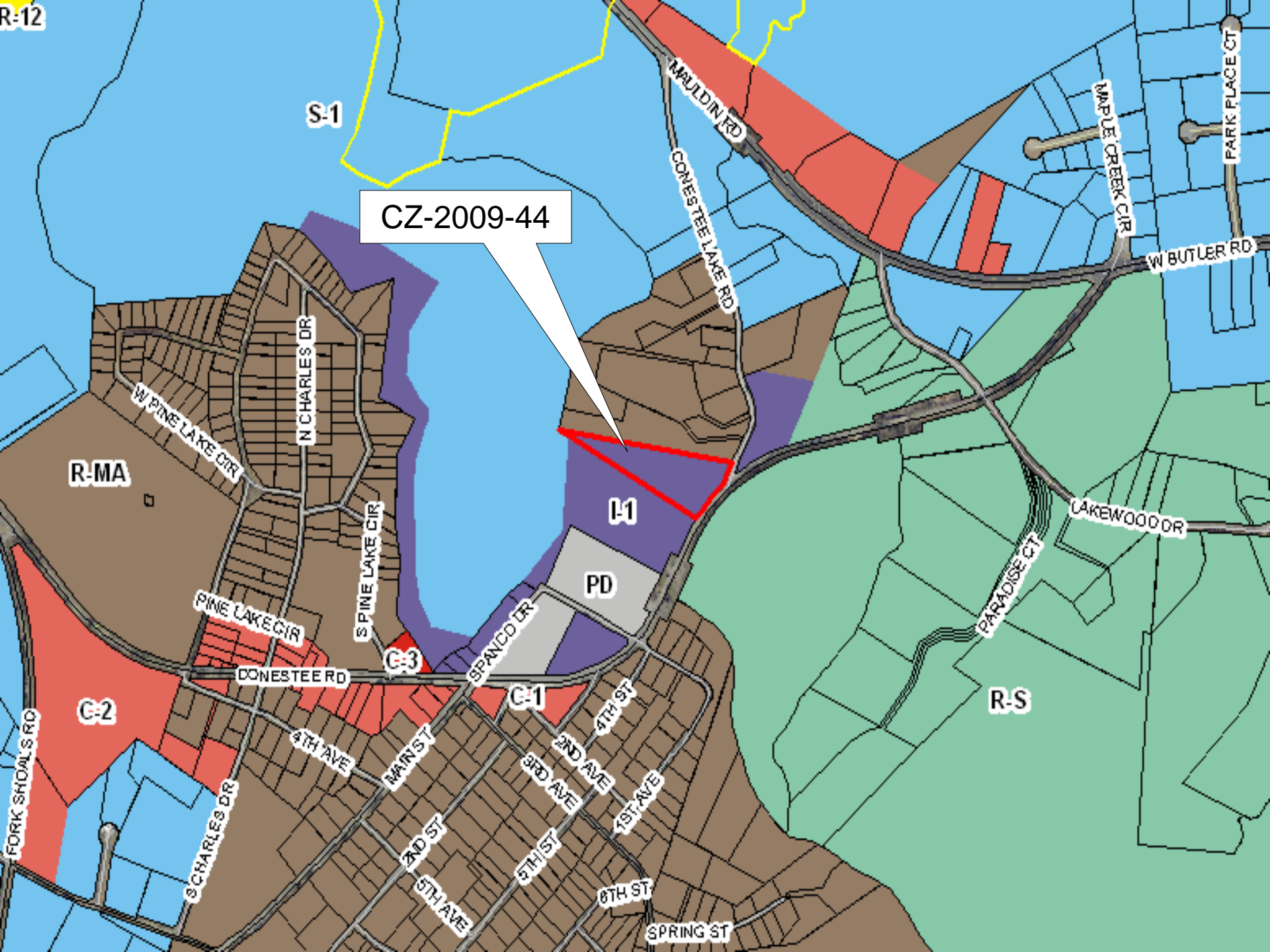


# CZ-2009-44

<b>APPLICANT:</b>	Rick Hammett
<b>PROPERTY LOCATION:</b>	Conestee Road
<b>PIN:</b>	0423000100900
<b>EXISTING ZONING:</b>	I-1, Industrial
<b>REQUESTED ZONING:</b>	S-1, Services
<b>ACREAGE:</b>	4
<b>CC:</b>	25 - Gibson



S-1

CZ-2009-44

R-MA

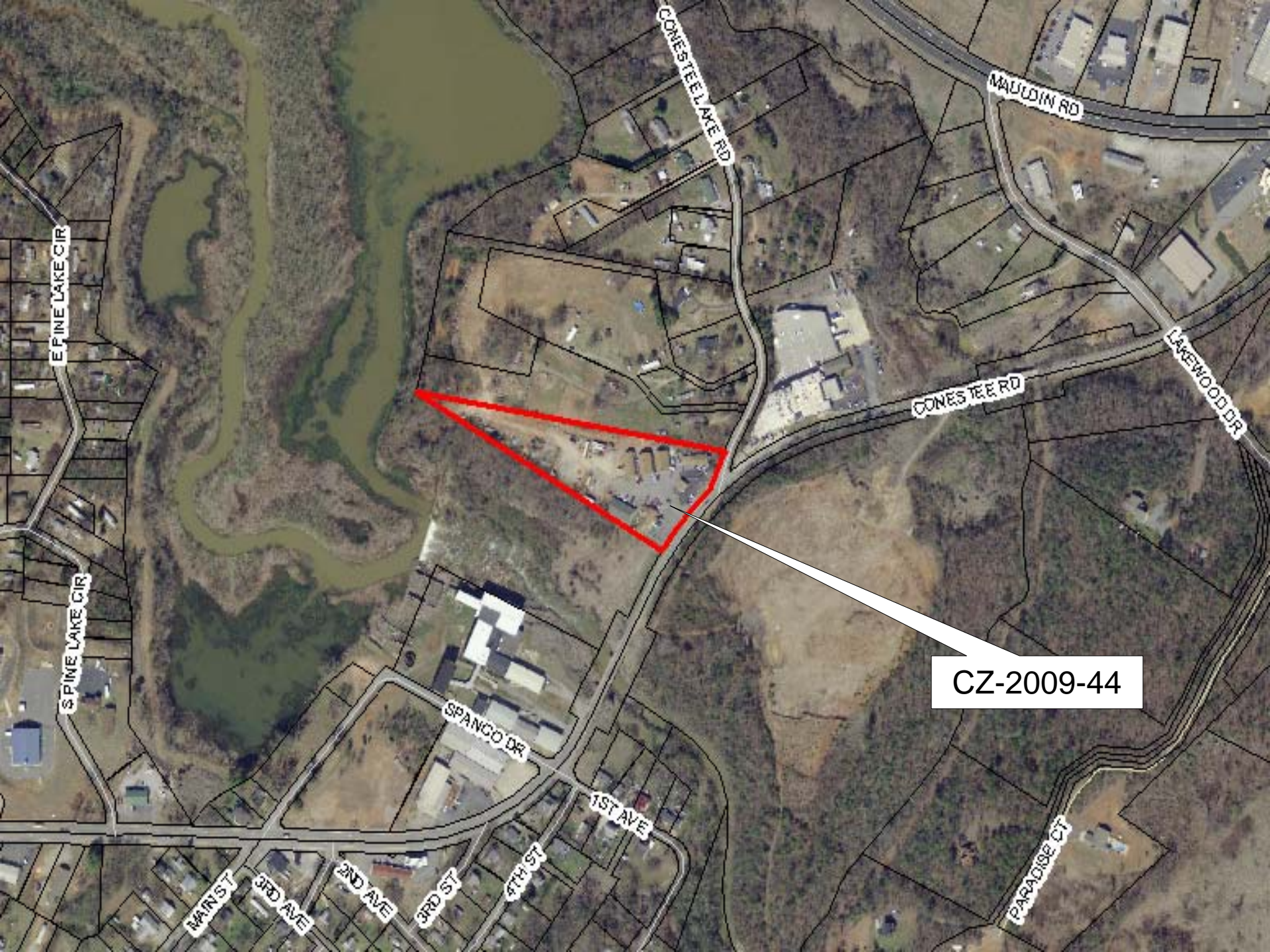
L-1

PD

C-2

C-1

R-S



CZ-2009-44

CZ-2009-44

CONESTEE LAKE RD

CONESTEE RD





Subject site from Conestee Road



Subject site from Conestee Road



Subject site from Conestee Road



Conestee Mill and vacant parcel adjacent to site