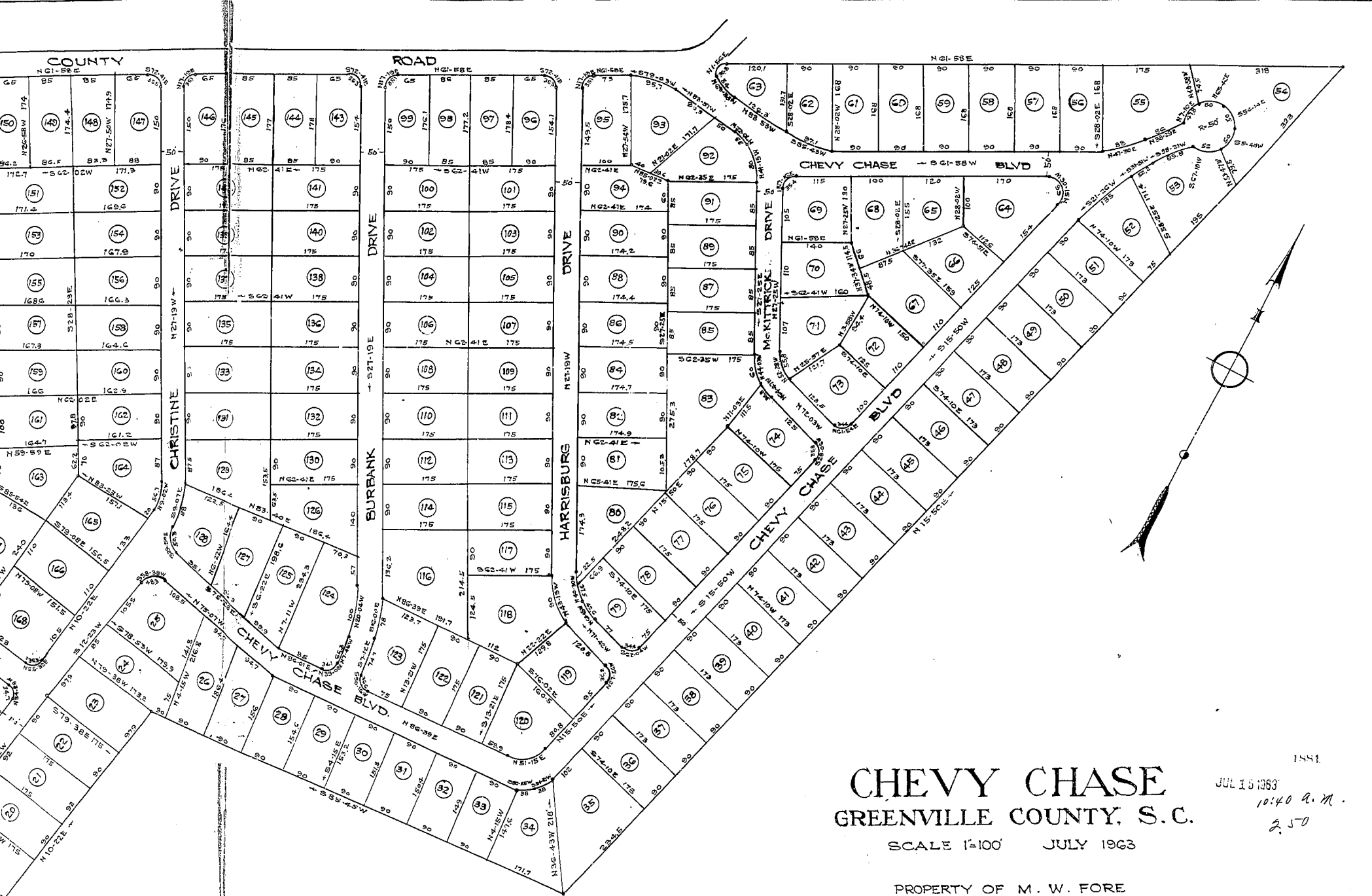


Books 350 & 354

5' Drainage and Utility Easements along all side and rear Lot Lines  
Iron Pins at all Corners

#1881 PLAT 15 July 1963  
 44 Page 120+121+122+123  
 Ellie Jamnsworth  
 Engineer



**CHEVY CHASE**  
**GREENVILLE COUNTY, S. C.**

SCALE 1"=100' JULY 1963

PROPERTY OF M. W. FORE  
 GREENVILLE, S. C.

DALTON & NEVES ENGINEERS  
 GREENVILLE, S. C.

1881  
 JUL 15 1963  
 10:40 A. M.  
 2.50

5' Drainage and Utility Easements  
 along all side and rear Lot Lines  
 Iron Pins at all Corners

2.50  
 YY - 121