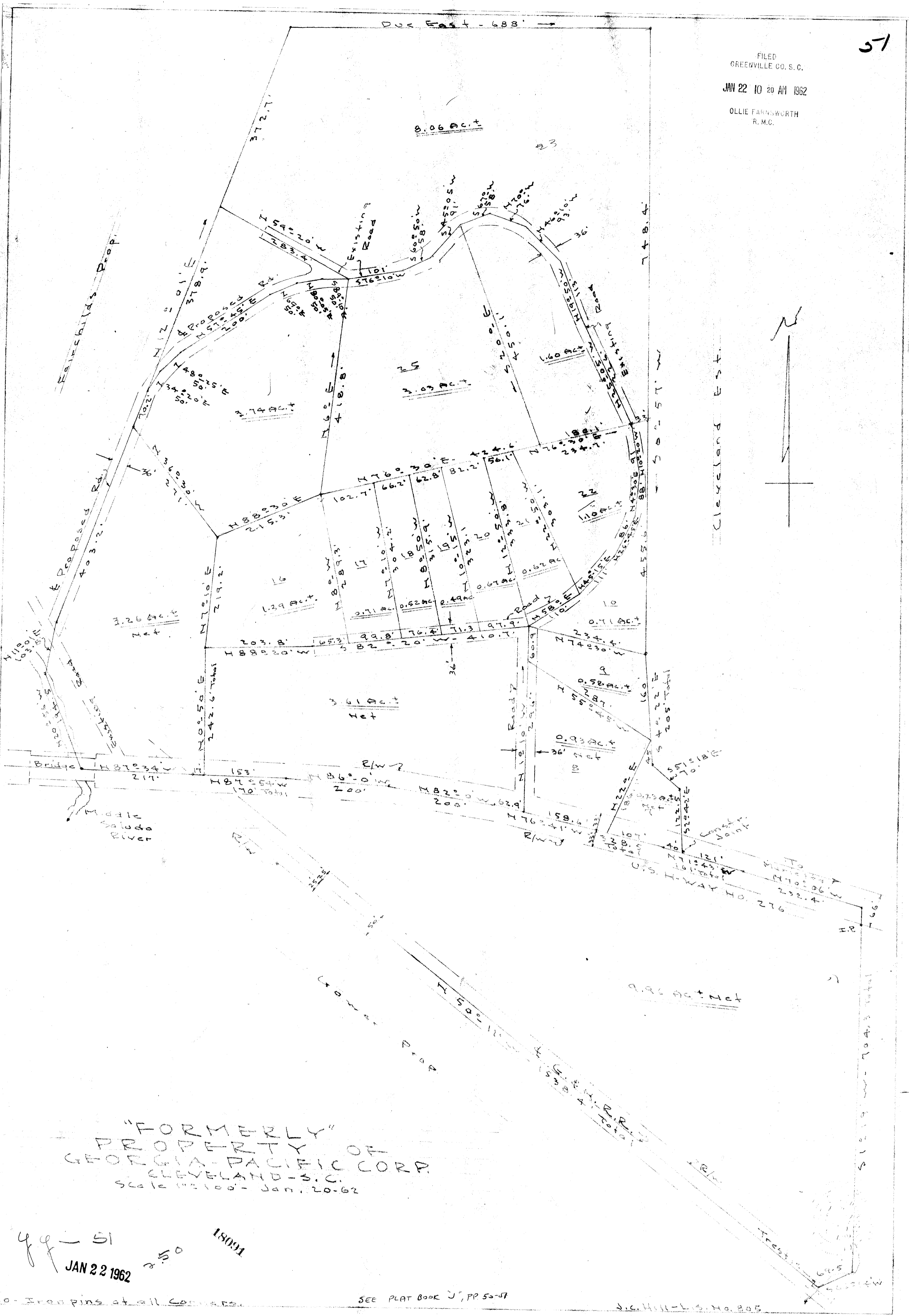


51

FILED
GREENVILLE CO. S. C.
JAN 22 10 20 AM 1962
OLLIE FANNINGWORTH
R. M. C.

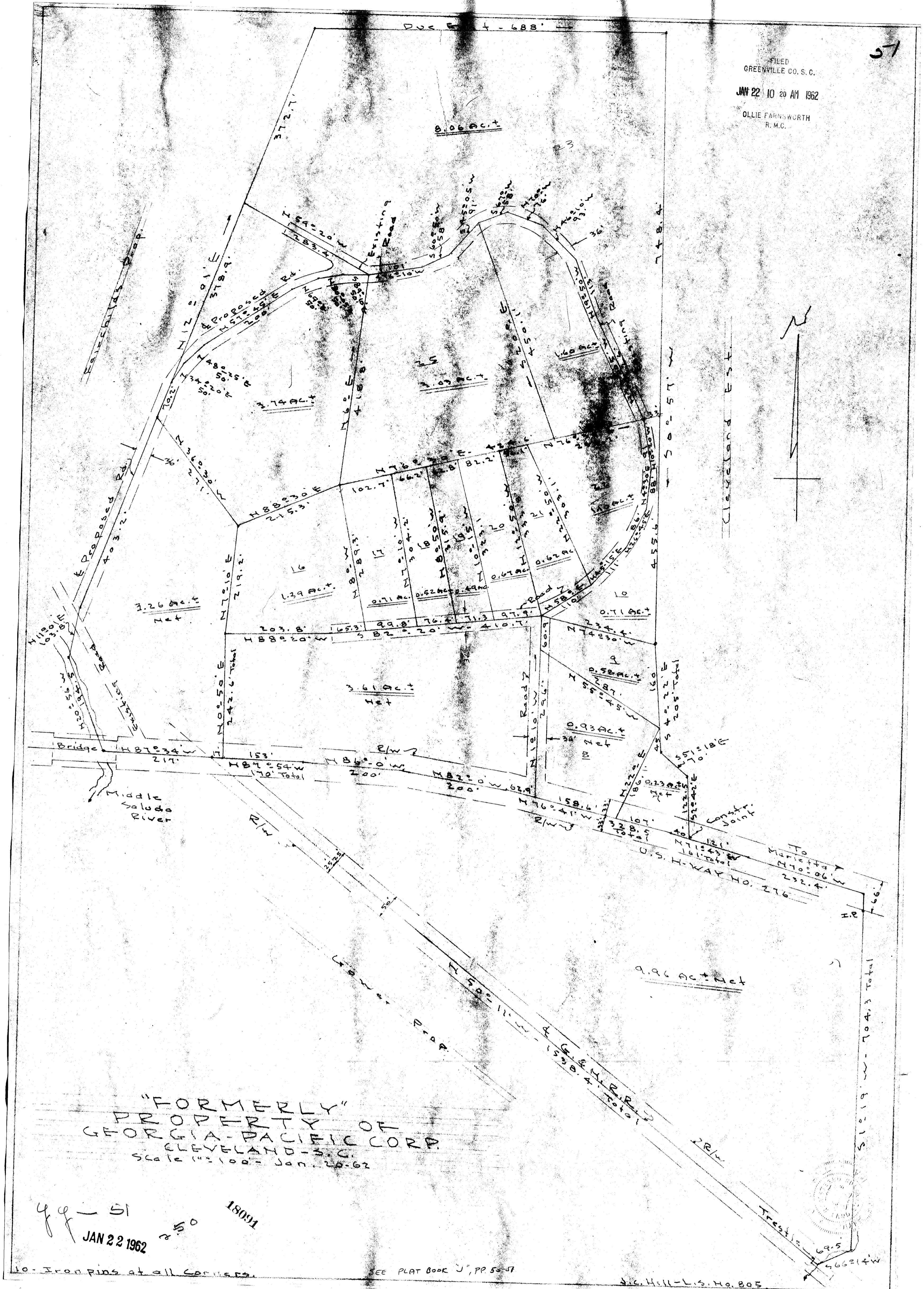


"FORMERLY"
PROPERTY OF
GEORGIA-PACIFIC CORP.
CLEVELAND-S.C.
Scale 1"=100' - Jan. 20-62

49-51
JAN 22 1962

SEE PLAT BOOK J, PP 55-57

18091 Filed This 22 day of Jan. 1962
And Recorded in Volume Page 51
Register Office Greenville County, S. C.



FILED
GREENVILLE CO. S. C.
JAN 22 10 20 AM 1962
OLLIE FARNWORTH
R. M. C.

57

"FORMERLY"
PROPERTY OF
GEORGIA-PACIFIC CORP.
CLEVELAND - S.C.
Scale 1/2" = 100' - JAN. 22-62

44-51
JAN 22 1962

18091

10 - Iron pins at all corners.

SEE PLAT BOOK J, PP 55-57

Big Hill - L.S. No. 805

18091 Filed This 22 day of JAN 1962
and Recorded in Vol. 4 Page 51
OLLIE FARNWORTH
Register Mesne Conveyances Greenville County, S. C.