

Paris Mt. Water Co.
S 77° 45' W - 1535'

Con. Mon.

Con. Mon.

Gravit

①
27.30 Ac. ±

C. G. Todd

②
22.90 Ac. ±

Louise Thomas
NOW
JAMES WINGARD

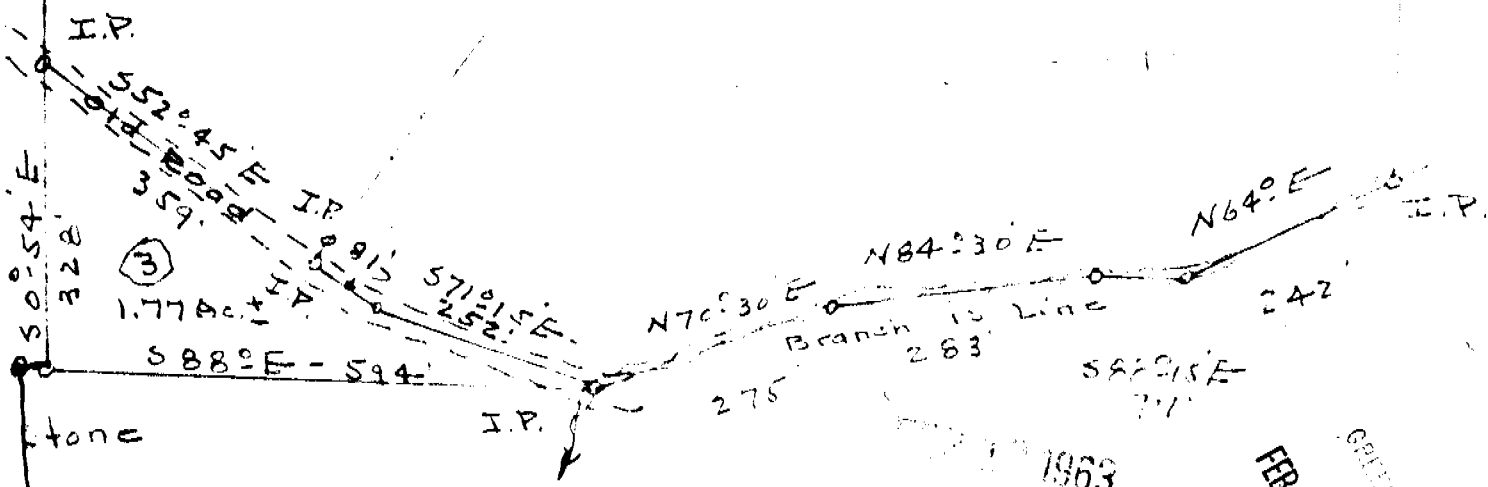
Paris Mt. Water Co.

Batson

Lindeman

S 0° 54' E - 1084'

N 19° 45' E - 1540'



③
1.77 Ac. ±

2E-ULAH DUNCAN'S P.D.
Surveyed by - W. S. Riddle April 1963
Scale 1" = 200'

TRACT ① NOW PROPERTY OF VERMONA and FRANCES M. JUNIOR

Recorded February 19th.
1963 at 1:02 P. M. #21011

1963
FEB 19 1 02 PM 1963
GREENSBORO CO. S.C.
JULIE R. NORTH
JUN. 10. 1963

For Mr. C. G. Todd