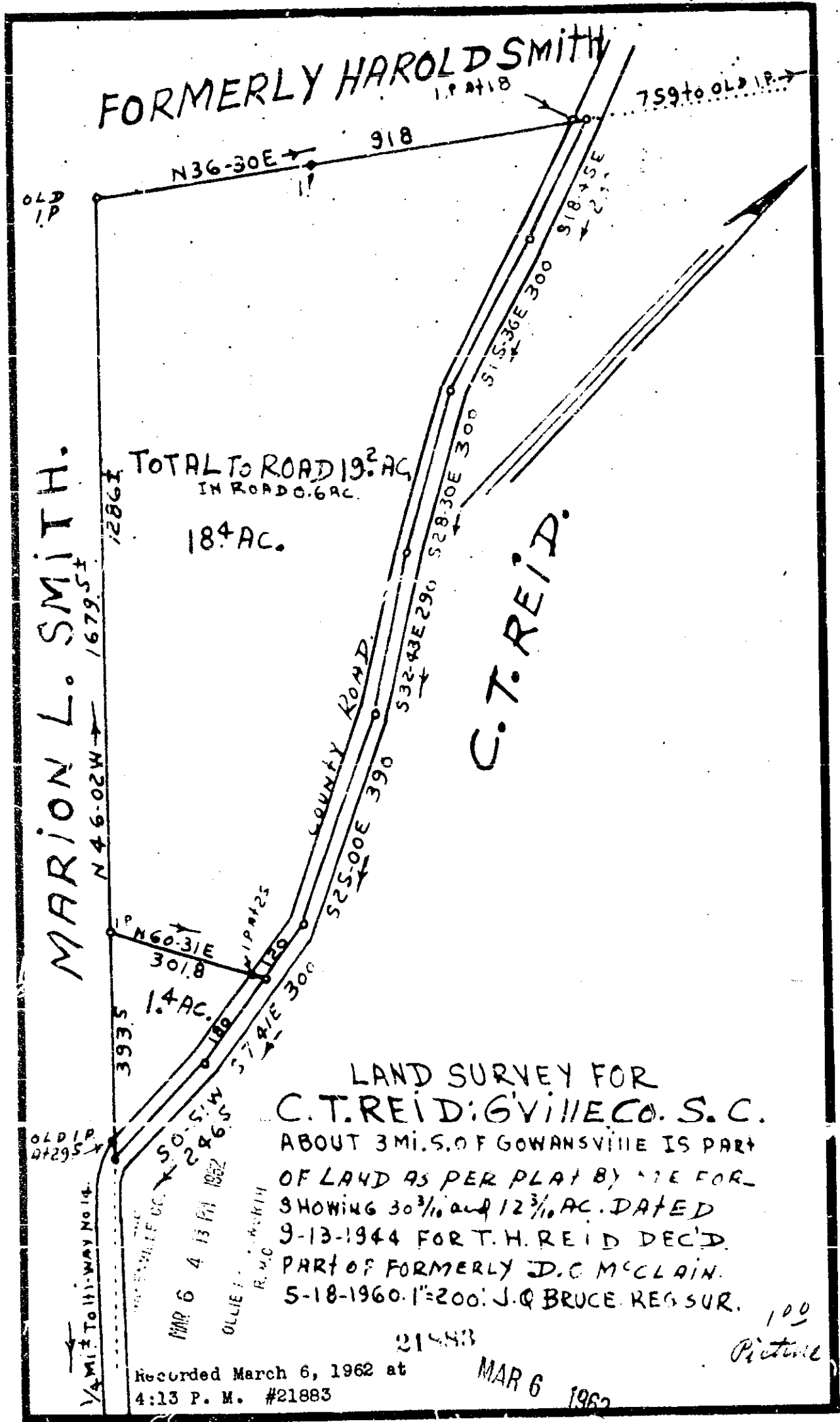


C-1-107



MARION L. SMITH.

FORMERLY HAROLD SMITH

C.T. REID.

TOTAL TO ROAD 19.2 AC.  
IN ROAD 0.6 AC.  
184 AC.

LAND SURVEY FOR  
C.T. REID: G'VILLE CO. S.C.  
ABOUT 3 MI. S. OF GOWANSVILLE IS PART  
OF LAND AS PER PLAT BY ME FOR  
SHOWING 30 <sup>3</sup>/<sub>10</sub> and 12 <sup>3</sup>/<sub>10</sub> AC. DATED  
9-13-1944 FOR T.H. REID DEC'D.  
PART OF FORMERLY J.C. McCLAIN.  
5-18-1960. 1"=200'. J. Q. BRUCE. REG SUR.

Recorded March 6, 1962 at  
4:13 P. M. #21883

MAR 6 1962

100  
Picture