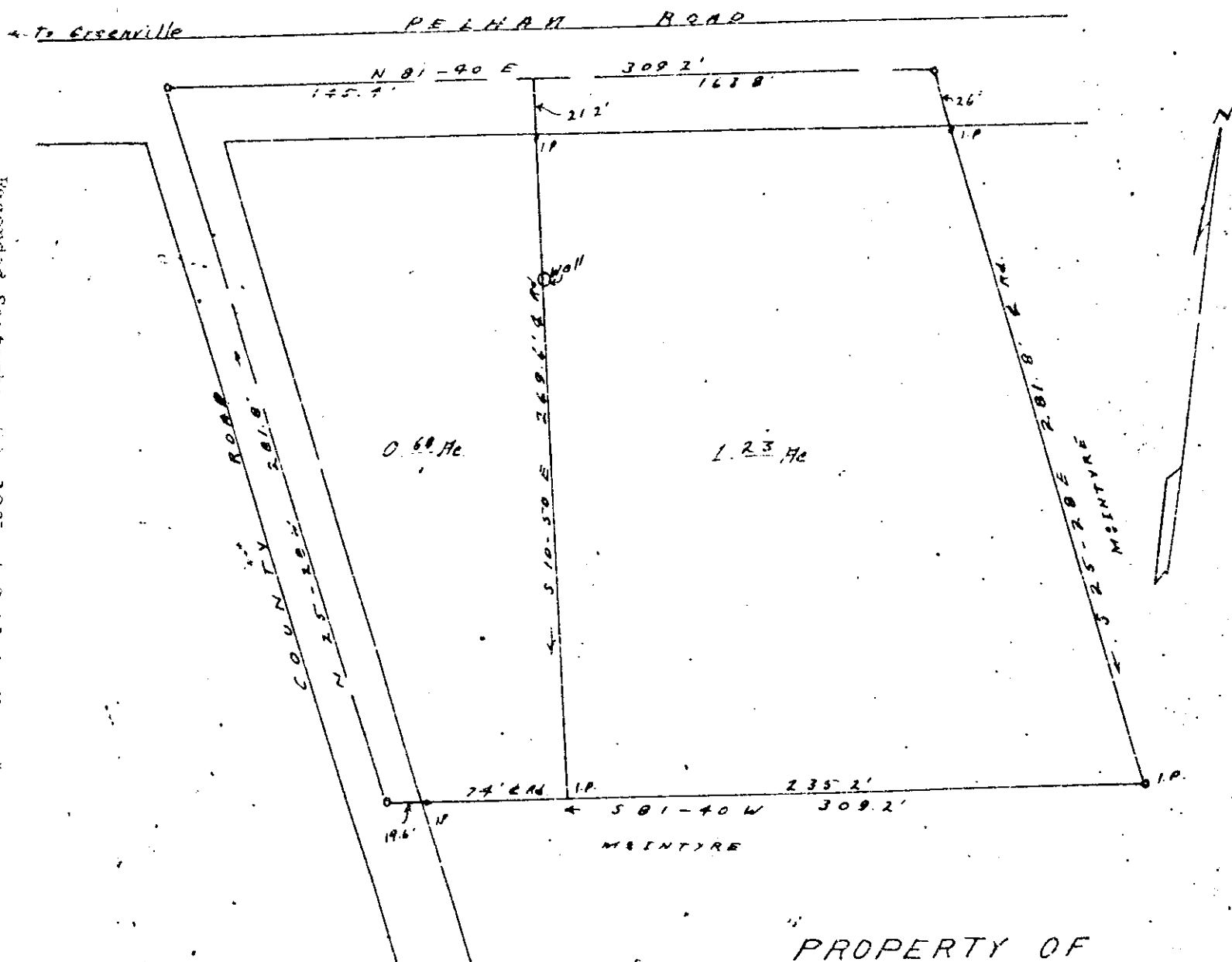


Plat Book WW, Page 161

Recorded September 22, 1961 at 9:51 A. M. #2709



PROPERTY OF
 W. M. & MABEL LEAGUE
 GREENVILLE COUNTY S. C.
 SCALE 1" = 50' MAY 7, 1951

SEP 22 1961

Platting
 T. B.

WW-161

W. J. Biddle - Surveyor

Field Book R 51