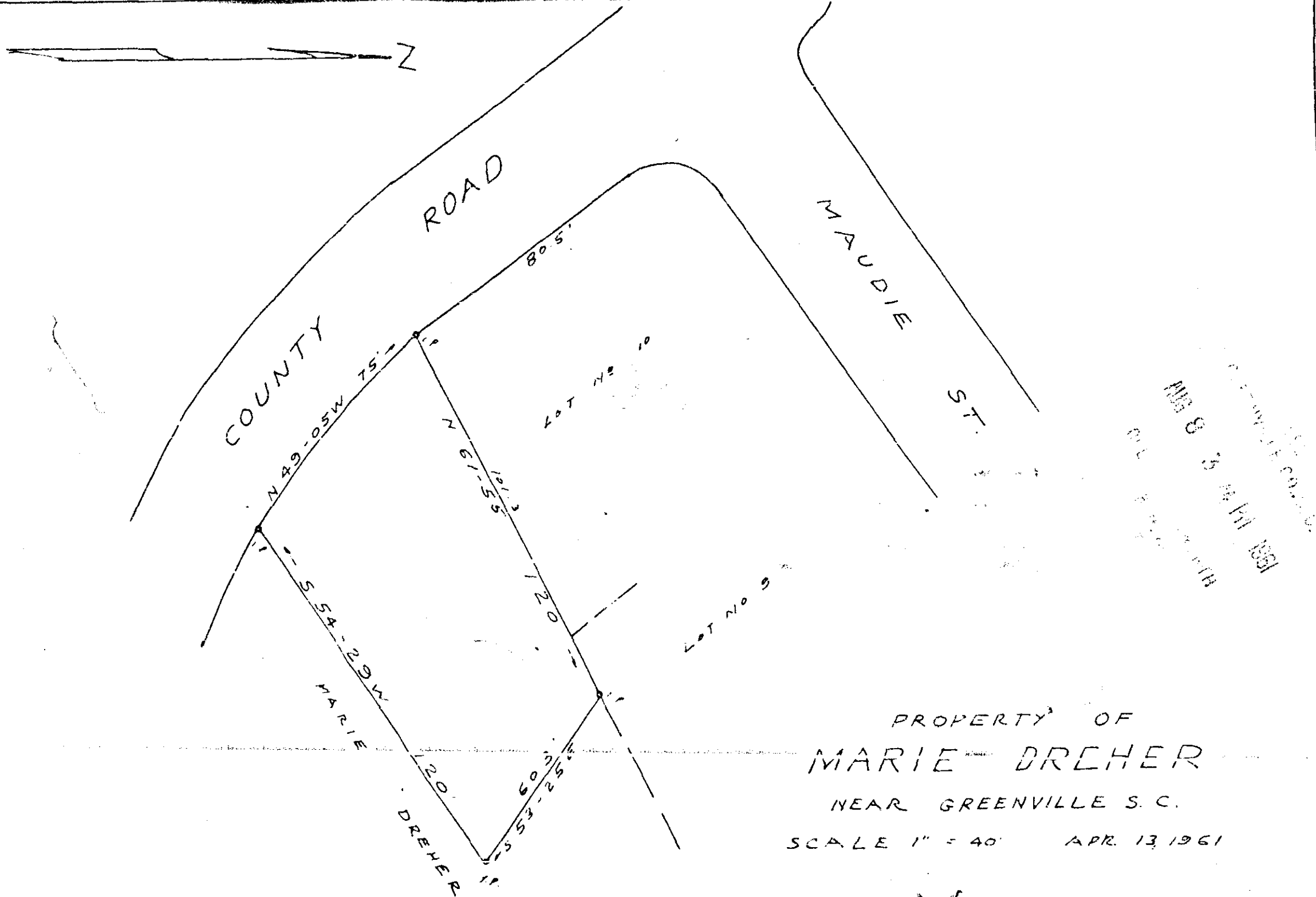


Plat Book VV, Page 165 B



PROPERTY OF
MARIE DREHER

NEAR GREENVILLE S. C.
SCALE 1" = 40' APR. 13, 1961

3797. Plat this S. Day of Aug. 1961
And Recorded in Vol. VV, Page 165 B, N.
C. Riddle
Register Measur. Commission (Greenville County, S. C.)

3797 AUG 8 1961

VV-165

.50 P

C. Riddle - Reg. L.S.