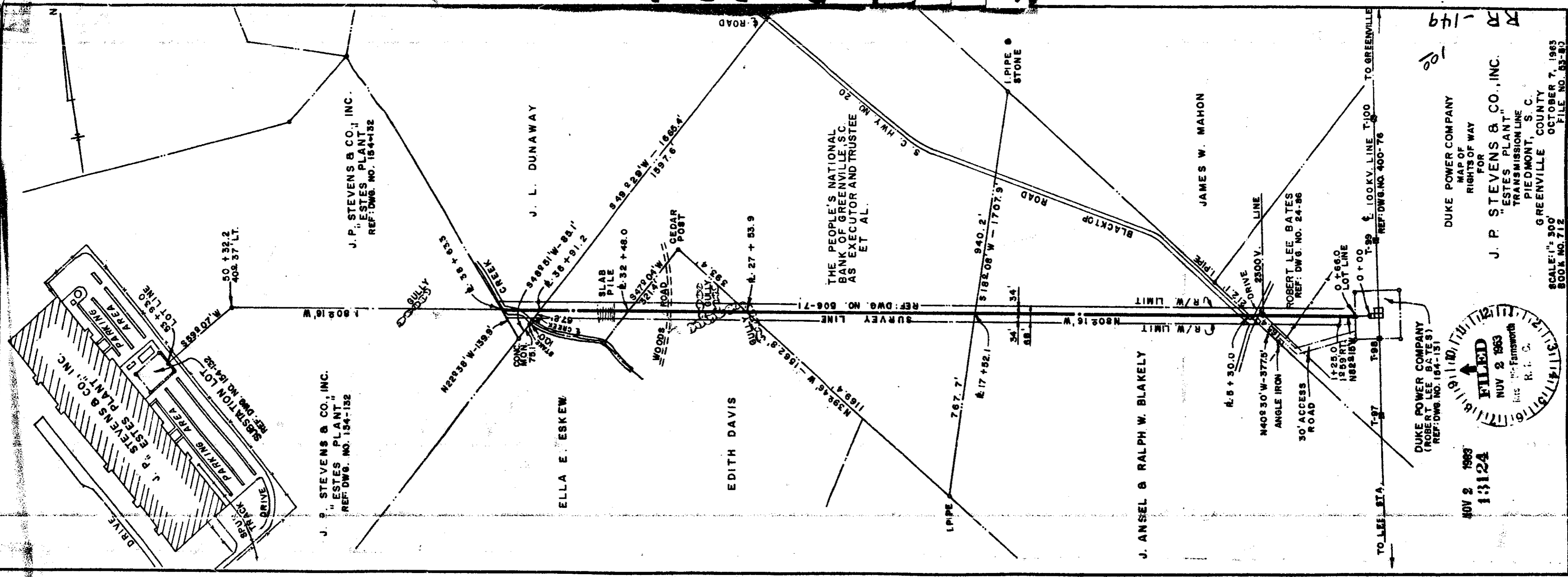


Plat Book-RR-Page 149A



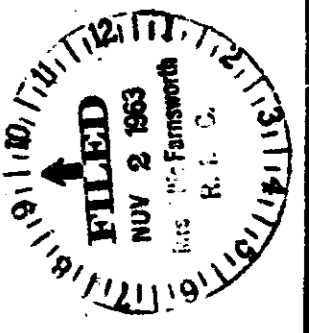
RR-149
101

DUKE POWER COMPANY
MAP OF
RIGHTS OF WAY
FOR
J. P. STEVENS & CO., INC.
"ESTES PLANT"
TRANSMISSION LINE
PIEDMONT, S. C.
GREENVILLE COUNTY
OCTOBER 7, 1965
FILE NO. 63-82

DUKE POWER COMPANY
(ROBERT LEE BATES)
REF: DWG. NO. 164-151

ROBERT LEE BATES
REF: DWG. NO. 24-96

NOV 2 1963
1:124



BAD COPY

13124 Filed This 2 day of Nov. 19 63
And Recorded in Vol. RR Page 149 at 930 P.M.
Celia Sawan
Register Means Conveyance Greenville County, S. C.