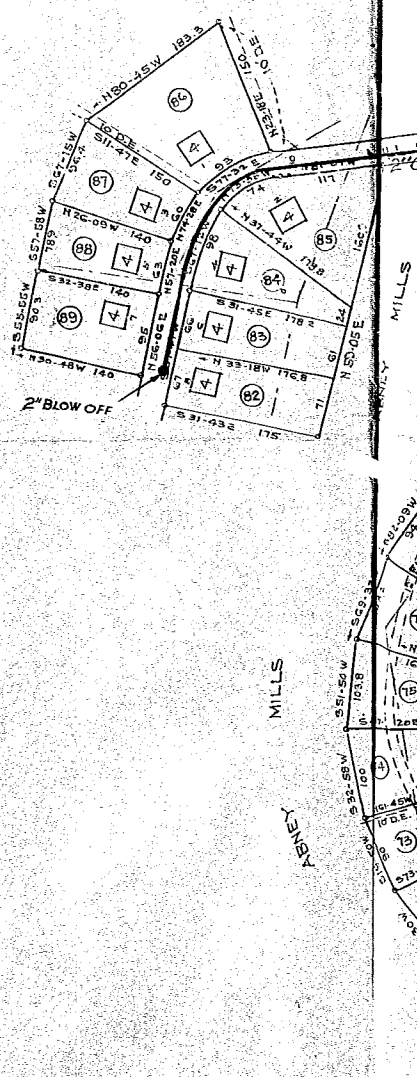
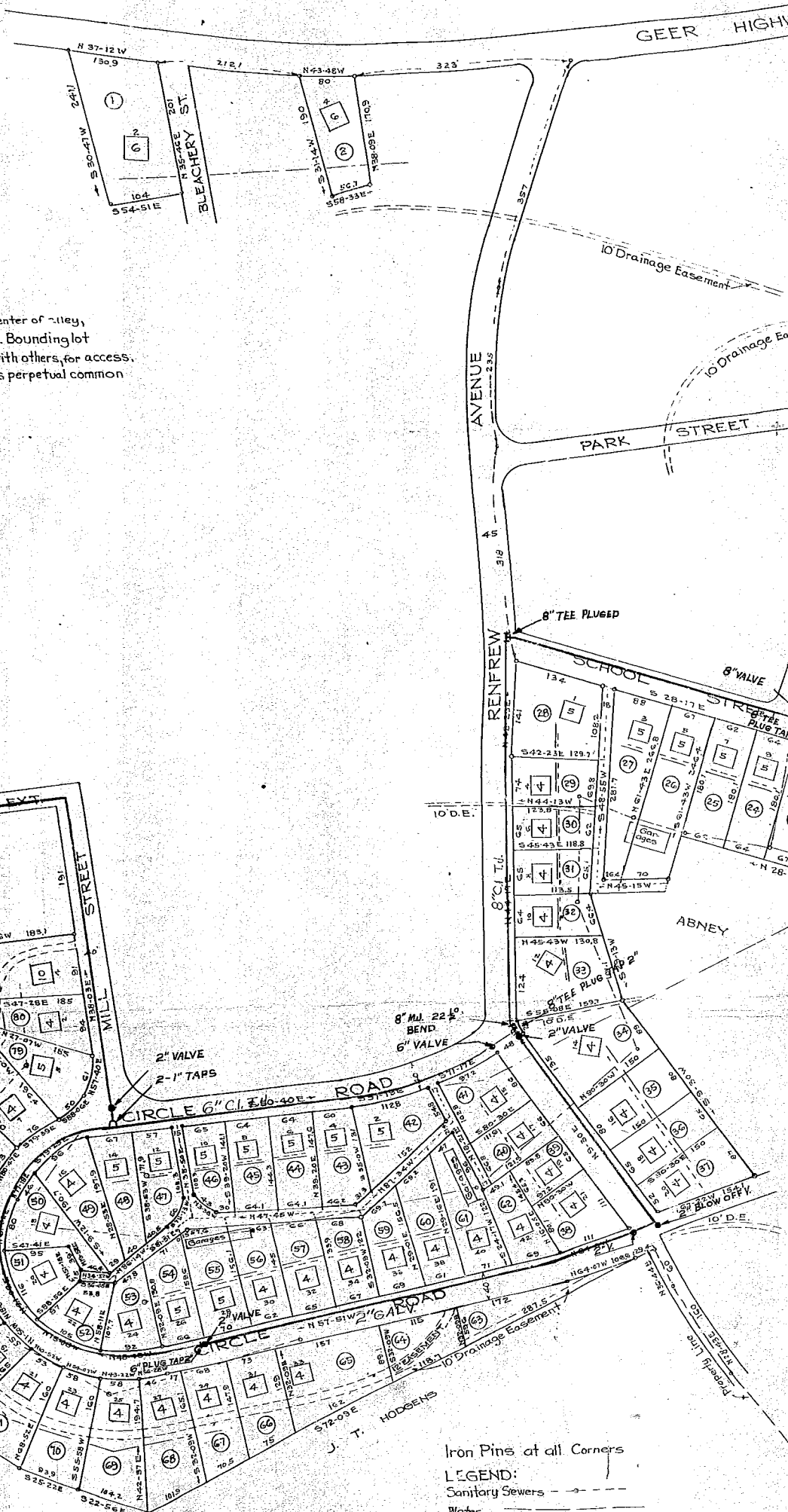


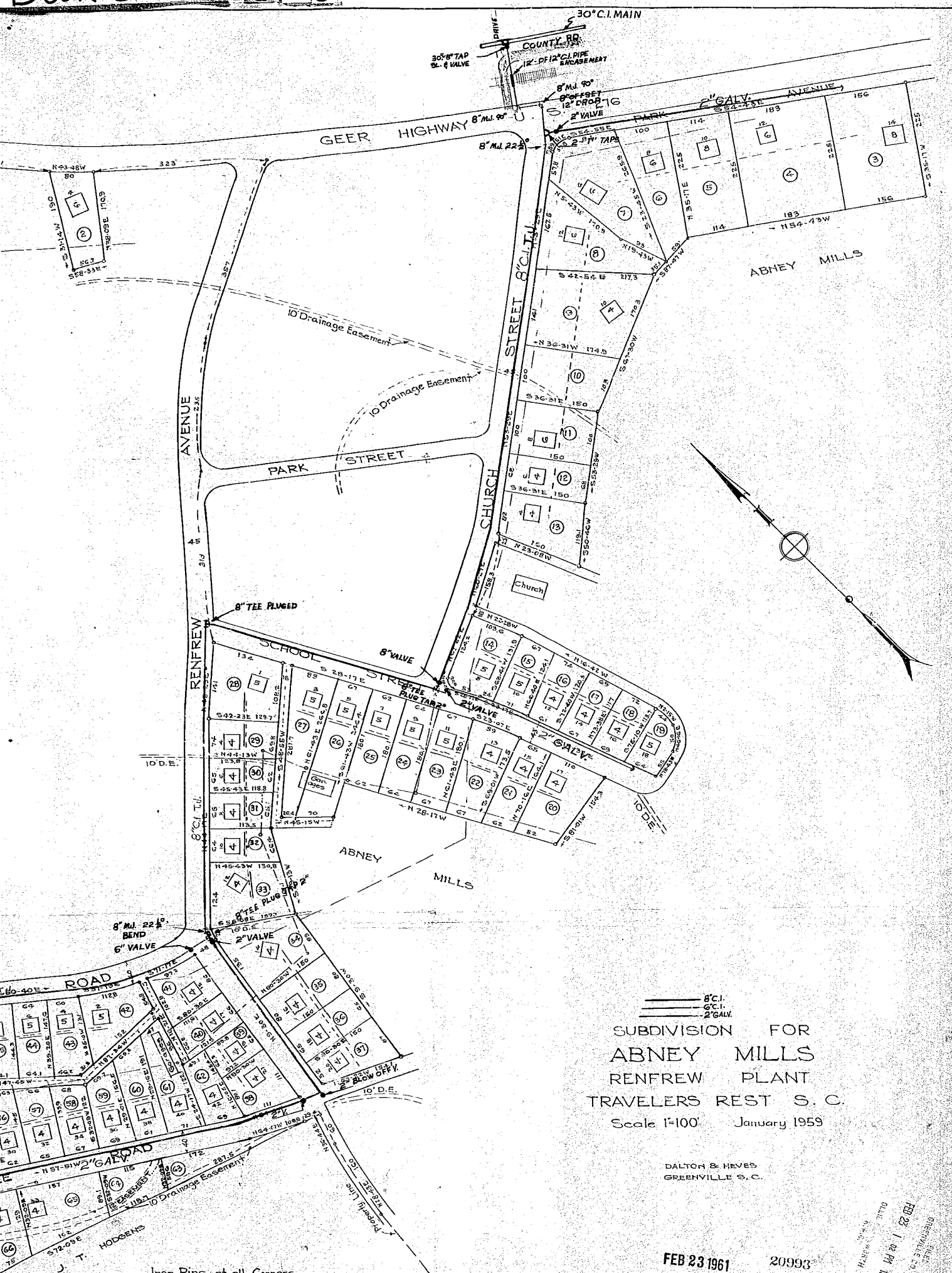
Broken lines in alleys indicate that lot lines extend to center of alley, subject to right of others to use alleys as designated. Bounding lot owner has perpetual right to use alley, in common with others, for access. Twelve-foot easement crossing lots 47-81 inclusive is perpetual common driveway or alley for access to the lots.



Iron Pins at all Corners
 LEGEND:
 Sanitary Sewers
 Water
 Easements
 Power Lines



BOOK 325 PAGE 32C



SUBDIVISION FOR
 ABNEY MILLS
 RENFREW PLANT
 TRAVELERS REST S. C.
 Scale 1"=100' January 1959

DALTON & HEVES
GREENVILLE S. C.

FEB 23 1961

20993

Iron Pins at all Corners
 LEGEND:
 Sanitary Sewers
 Water
 Easements
 Power Lines

FILED
 GREENVILLE S. C.
 FEB 23 1 46 PM 1961
 CLERK
 H. W. WATKINS

20993 - 174 + 175

20993... FEB 23 1961...
 and Recorded in Vol. 20 Page 174 + 175

Books 325 32C