

OLLIE F. WORTH  
R.M.C.

# DALEWOOD HEIGHTS

PROPERTY OF

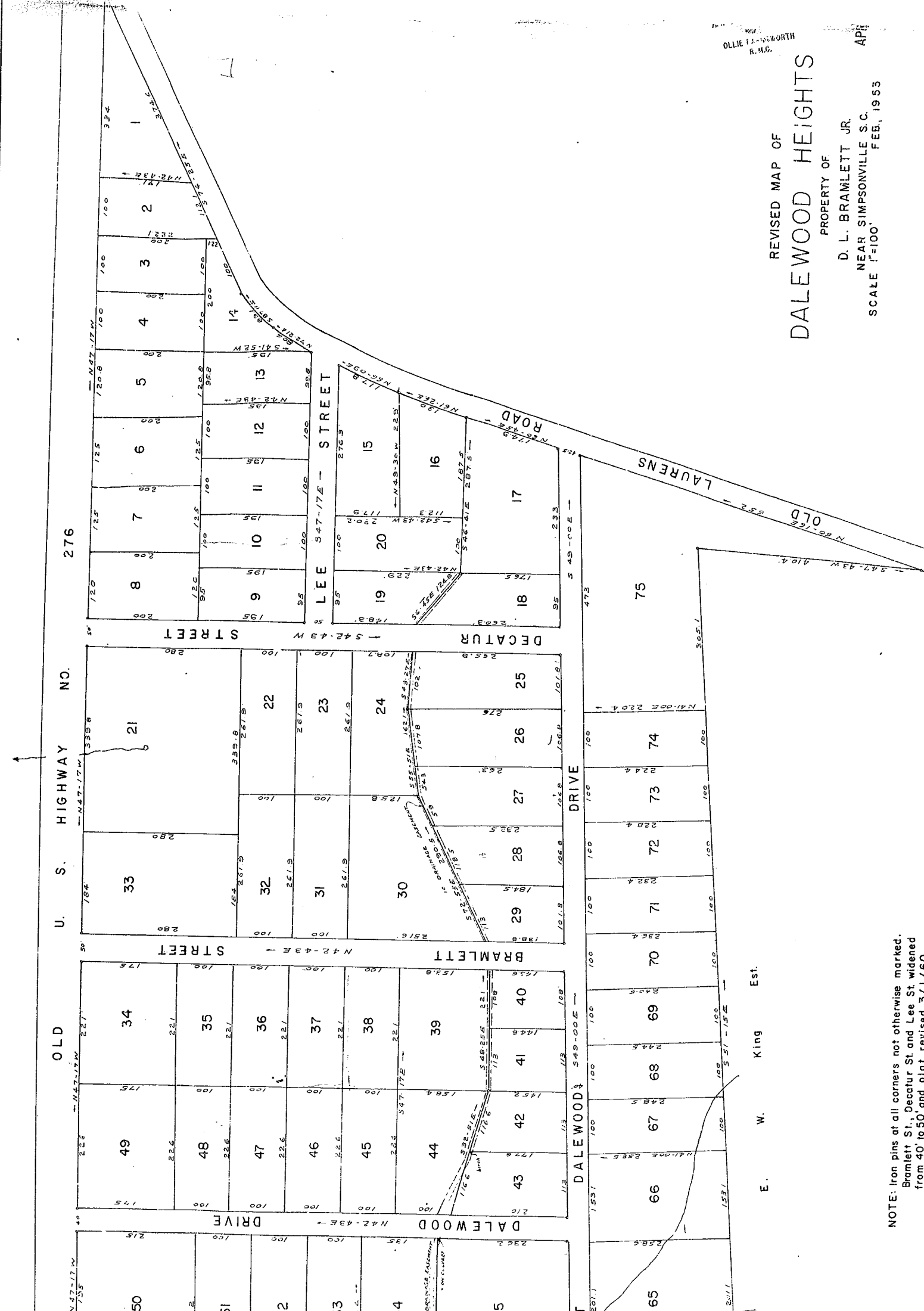
D. L. BRAMLETT JR.

NEAR SIMPSONVILLE S.C.

SCALE 1"=100'

REVISED MAP OF

APR  
FEB, 1953



NOTE: Iron pins at all corners not otherwise marked.  
 Bramlett St., Decatur St. and Lee St. widened  
 from 40' to 50' and plat revised 3/1/60



NOTE: Iron pins at all corners not otherwise marked.  
 Bramlett St., Decatur St and Lee St widened  
 from 40' to 50' and plat revised 3/1/60